



SOIL BORING LOG

Page 1 of 3

ROUTE FAP 823 (IL 15) DESCRIPTION Un-Name'd Stream LOGGED BY E. Sandschafer
SECTION (22.02)B-1 LOCATION SW 1/4, SEC. 4, TWP. 2 S. RNG. 9 E. 3 PM
COUNTY Wayne DRILLING METHOD Hollow stem auger & split spoon HAMMER TYPE Auto 140#

Table with columns: DEPTH, BULGE, S-SHEAR, PENETROMETER, SOIL DESCRIPTION, QUANTITY, SPT VALUE, etc. Includes soil descriptions like 'Very soft, red clay SILTY LOAM' and 'Medium, damp, gray, SANDY LOAM'.

The Unconfined Compressive Strength (UCS) Failure Mode is indicated by (B-Bulge, S-Shear, P-Penetrometer) The SPT (N value) is the sum of the last two blow values in each sampling zone (AASHTO T206) BBS, from 137 (Rev. 8-99)



SOIL BORING LOG

Page 2 of 3

ROUTE FAP 823 (IL 15) DESCRIPTION Un-Name'd Stream LOGGED BY E. Sandschafer
SECTION (22.02)B-1 LOCATION SW 1/4, SEC. 4, TWP. 2 S. RNG. 9 E. 3 PM
COUNTY Wayne DRILLING METHOD Hollow stem auger & split spoon HAMMER TYPE Auto 140#

Table with columns: DEPTH, BULGE, S-SHEAR, PENETROMETER, SOIL DESCRIPTION, QUANTITY, SPT VALUE, etc. Includes soil descriptions like 'Very soft, damp, gray, SANDY LOAM' and 'Medium, wet, gray, SAND of small Gravel'.

The Unconfined Compressive Strength (UCS) Failure Mode is indicated by (B-Bulge, S-Shear, P-Penetrometer) The SPT (N value) is the sum of the last two blow values in each sampling zone (AASHTO T206) BBS, from 137 (Rev. 8-99)



ROCK CORE LOG

Page 3 of 3

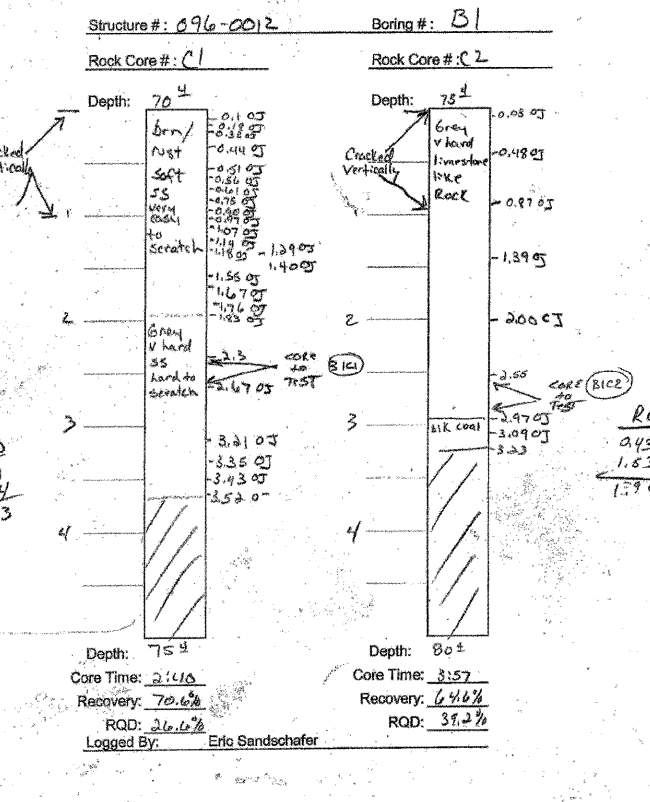
ROUTE FAP 823 (IL 15) DESCRIPTION Un-Name'd Stream LOGGED BY E. Sandschafer
SECTION (22.02)B-1 LOCATION SW 1/4, SEC. 4, TWP. 2 S. RNG. 9 E. 3 PM
COUNTY Wayne CORING METHOD Rotary, surf set diamond bit

Table with columns: DEPTH, CORING BARREL TYPE & SIZE, CORE DIAMETER, SOIL DESCRIPTION, QUANTITY, etc. Includes rock descriptions like 'Brown, soft, SANDSTONE, scratches easily' and 'Gray, very hard, estimated LIMESTONE'.

Color pictures of the cores Available on request. Cores will be stored for examination until 09/28/09. The 'Strength' column represents the uniaxial compressive strength of the core sample (ASTM D-2938)

Field Rock Core Log

Date: 9-29-08



SOIL BORING LOG

Page 1 of 2

ROUTE FAP 823 (IL 15) DESCRIPTION Un-Name'd Stream LOGGED BY E. Sandschafer
SECTION (22.02)B-1 LOCATION SW 1/4, SEC. 4, TWP. 2 S. RNG. 9 E. 3 PM
COUNTY Wayne DRILLING METHOD Hollow stem auger & split spoon HAMMER TYPE Auto 140#

Table with columns: DEPTH, BULGE, S-SHEAR, PENETROMETER, SOIL DESCRIPTION, QUANTITY, SPT VALUE, etc. Includes soil descriptions like 'Soft to medium, damp, red marbled gray, SILTY LOAM' and 'Medium, damp, gray marbled red, CLAY LOAM'.

The Unconfined Compressive Strength (UCS) Failure Mode is indicated by (B-Bulge, S-Shear, P-Penetrometer) The SPT (N value) is the sum of the last two blow values in each sampling zone (AASHTO T206) BBS, from 137 (Rev. 8-99)



SOIL BORING LOG

Page 2 of 2

ROUTE FAP 823 (IL 15) DESCRIPTION Un-Name'd Stream LOGGED BY E. Sandschafer
SECTION (22.02)B-1 LOCATION SW 1/4, SEC. 4, TWP. 2 S. RNG. 9 E. 3 PM
COUNTY Wayne DRILLING METHOD Hollow stem auger & split spoon HAMMER TYPE Auto 140#

Table with columns: DEPTH, BULGE, S-SHEAR, PENETROMETER, SOIL DESCRIPTION, QUANTITY, SPT VALUE, etc. Includes soil descriptions like 'Soft, very damp, gray, SANDY LOAM' and 'Medium, damp, gray, SANDY LOAM'.

The Unconfined Compressive Strength (UCS) Failure Mode is indicated by (B-Bulge, S-Shear, P-Penetrometer) The SPT (N value) is the sum of the last two blow values in each sampling zone (AASHTO T206) BBS, from 137 (Rev. 8-99)

PRINTED DATE: 12/15/2011 FILE NAME: c:\projects\756\756.dwg

Table with columns: DESIGNED, CHECKED, DRAWN, CHECKED. Values: ADG, DF, ADG, DF.

ESI CONSULTANTS, LTD logo and address: 753 WINDSOR ROAD CHARLESTON, IL 61920

STATE OF ILLINOIS DEPARTMENT OF TRANSPORTATION

(Sheet 1 of 2)

BORING LOGS STRUCTURE NO. 096-0073 SHEET NO. 23 OF 24 SHEETS

Table with columns: F.A.P. RTE, SECTION, COUNTY, TOTAL SHEETS, SHEET NO. Values: 823, (22.02)B-1 & (22.02)B-1, Wayne, 85, 28.

CONTRACT NO 74216 ILLINOIS FEDERAL AID PROJECT