

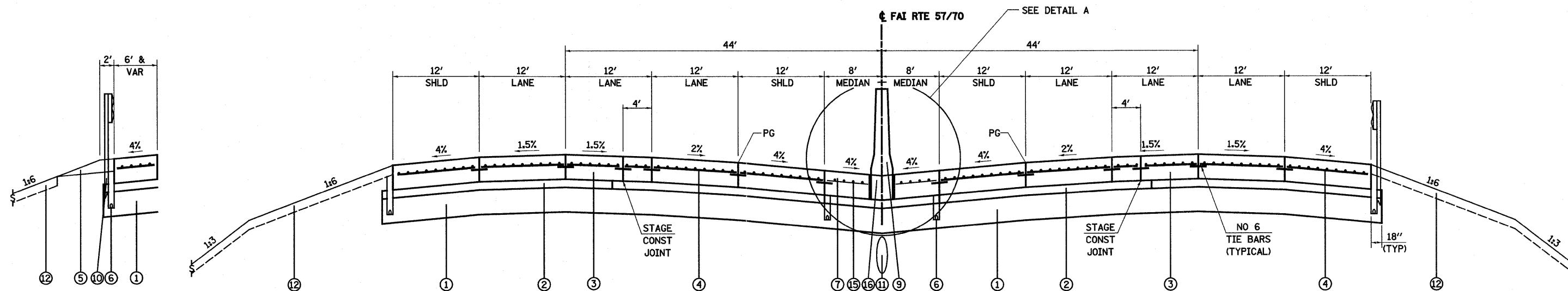
- ① GORE AREA, VARIES 20.22' TO 1', LT STA 2215+99.98 TO STA 2219+57.21
- ② WIDTH & SLOPE VARIES - SEE PAVEMENT ELEVATION AND JOINT DETAILS
- ③ VARIES, LT STA 2219+57.21 TO STA 2222+54.84
- ④ VARIES, LT STA 2221+69.72 TO STA 2222+54.84
- ⑤ AGGREGATE SHOULDER ENDS LT STA 2222+03.74
- ⑩ JOINTED PAVEMENT ENDS LT STA 2218+57.99 (RAMP A STA 14+00.29)

PROPOSED MAINLINE SUPERELEVATED SECTION

STA 2215+99.98 TO STA 2227+42.36 (FAI RTE 57/70)

STATION EQUATION - STA 2222+54.84, FAI 57/70 = STA 10+00.00, RAMP A
 STATION EQUATION - STA 2227+42.36, FAI 57/70 = STA 38+95.47, RAMP B

- ⑥ GORE AREA, VARIES 7.57' TO 2', RT STA 2215+99.98 TO STA 2218+84.28
- ⑦ VARIES, RT STA 2218+84.28 TO STA 2227+42.36
- ⑧ VARIES, RT STA 2224+18.09 TO STA 2227+42.36
- ⑨ AGGREGATE SHOULDER ENDS RT STA 2225+38.16
- ⑪ JOINTED PAVEMENT ENDS RT STA 2217+83.49 (RAMP B STA 29+45.47)



PROPOSED MAINLINE TANGENT SECTION

STA 2255+37.63 TO STA 2268+00.00 (FAI RTE 57/70)

TYPICAL GUARD RAIL APPLICATION LT

LEGEND

- ① PROPOSED PROCESSING MODIFIED SOIL 12"
 - ② PROPOSED STABILIZED SUB-BASE 4"
 - ③ PROPOSED CONTINUOUSLY REINFORCED PCC PAVEMENT 13"
 - ④ PROPOSED PAVEMENT REINFORCEMENT 13"
 - ⑤ PROPOSED AGGREGATE SHOULDERS, TYPE B 6"
 - ⑥ PROPOSED PIPE UNDERDRAINS 6"
 - ⑦ PROPOSED PORTLAND CEMENT CONCRETE SHOULDERS 13"
 - ⑧ PROPOSED COMBINATION CONCRETE CURB & GUTTER, TYPE B-6.24
 - ⑨ PROPOSED CONCRETE BARRIER, DOUBLE FACE, 42 INCH HEIGHT
 - ⑩ PROPOSED STEEL PLATE BEAM GUARD RAIL, TYPE A
 - ⑪ PROPOSED STORM SEWERS, CLASS A
 - ⑫ PROPOSED TOPSOIL 4"
 - ⑬ PROPOSED PCC PAVEMENT 10 1/4" (JOINTED)
 - ⑭ PROPOSED PCC PAVEMENT 10 1/2" (JOINTED)
 - ⑮ PROPOSED PAVEMENT FABRIC
 - ⑯ PROPOSED CONCRETE BARRIER BASE
 - ⑰ PROPOSED PIPE UNDERDRAINS 4"
 - ⑱ PROPOSED PORTLAND CEMENT CONCRETE SIDEWALK 4"
 - ⑲ PROPOSED AGGREGATE BASE COURSE, TYPE B, 8"
 - ⑳ PROPOSED AGGREGATE SHOULDER TYPE B
 - ㉑ PROPOSED PROCESSING MODIFIED SOIL 24"
- SEE LEGEND NOS. ③ - ④ FOR PAVEMENT COMPOSITION OF SHOULDERS AND DRIVING LANES

NOTES
 PROPOSED SIDE SLOPES/DITCHES VARY - SEE CROSS SECTIONS

LIMITS OF PROPOSED TOPSOIL VARIES - SEE CROSS SECTIONS

FILE NAME =	USER NAME = John	DESIGNED - JWS	REVISED -	STATE OF ILLINOIS DEPARTMENT OF TRANSPORTATION	PROPOSED TYPICAL SECTIONS - I-57/70	F.A.I. RTE. 57/70	SECTION (25-3,4)R	COUNTY EFFINGHAM	TOTAL SHEETS 1098	SHEET NO. 26	
#FILEL#	PLOT SCALE = 100.0000' / IN.	DRAWN - RCB	REVISED -			SCALE: 1"=50'	SHEET NO. 13 OF 17 SHEETS	STA. 2215+99.98 TO STA. 2268+00.00	FED. ROAD DIST. NO.	ILLINOIS FED. AID PROJECT	CONTRACT NO. 74299
	PLOT DATE = 3/19/2011	CHECKED - BRM	REVISED -								
		DATE - 6-12-08	REVISED -								