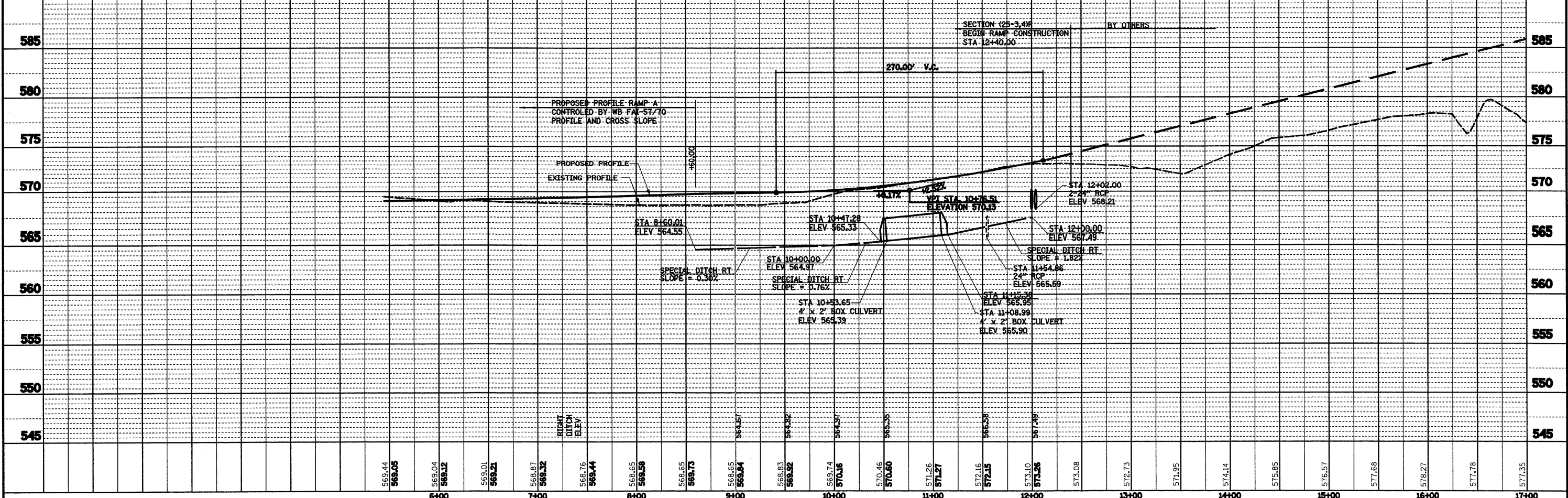


**PROP. FAYETTE RAMP A
CURVE C53**
 P.T. STA = 12+44.41
 $\Delta = 31^{\circ} 30' 34''$ (RT)
 $D = 7^{\circ} 32' 20''$
 $R = 760.00'$
 $T = 214.41'$
 $L = 417.96'$
 $E = 29.67'$
 $\phi = 8.00\%$
 $T.R. = 48.00'$
 $S.E. RUN = 255.00'$
 $P.C. STA = 10+00.00$
 $P.T. STA = 14+17.96$
 $SE ATTAINED STA 8+60.00$
 TO STA 10+70.00 (2.00% TO 8.00%)
 $SE REMOVED STA 13+32.96$
 TO STA 15+90.50 (8.00% TO 0.0%)

FOR CLARITY THE PROPOSED STORM SEWERS AND UNDERDRAINS HAVE NOT BEEN PRESENTED ON THE ROADWAY PLAN AND PROFILE SHEETS. SEE DRAINAGE SHEETS FOR STORM SEWER AND UNDERDRAIN INFORMATION

PLAN	SURVEYED	DATE
	PLOTTED	
	GRADED	
	STRUCTURE	
	NOTATIONS	
	NO.	

PROFILE	SURVEYED	DATE
	PLOTTED	
	GRADED	
	STRUCTURE	
	NOTATIONS	
	NO.	



FILE NAME =	USER NAME = John	DESIGNED - JWS	REVISED -	STATE OF ILLINOIS DEPARTMENT OF TRANSPORTATION	PLAN AND PROFILE, RAMP A, FAYETTE AVENUE	F.A.I. RTE.	SECTION	COUNTY	TOTAL SHEETS	SHEET NO.	
S:\Projects\403-00072-57-70\dm\keller\VP-5170.dgn		DRAWN - PDB	REVISED -			57/70	(25-3,4)R	EFFINGHAM	1098	66	
		CHECKED - BRM	REVISED -			SCALE: 1"=50'		SHEET NO. 1 OF 4 SHEETS		STA. 5+45.18 TO STA. 9+99.72	
		DATE - 6-5-08	REVISED -			FED. ROAD DIST. NO.		ILLINOIS FED. AID PROJECT		CONTRACT NO. 74299	