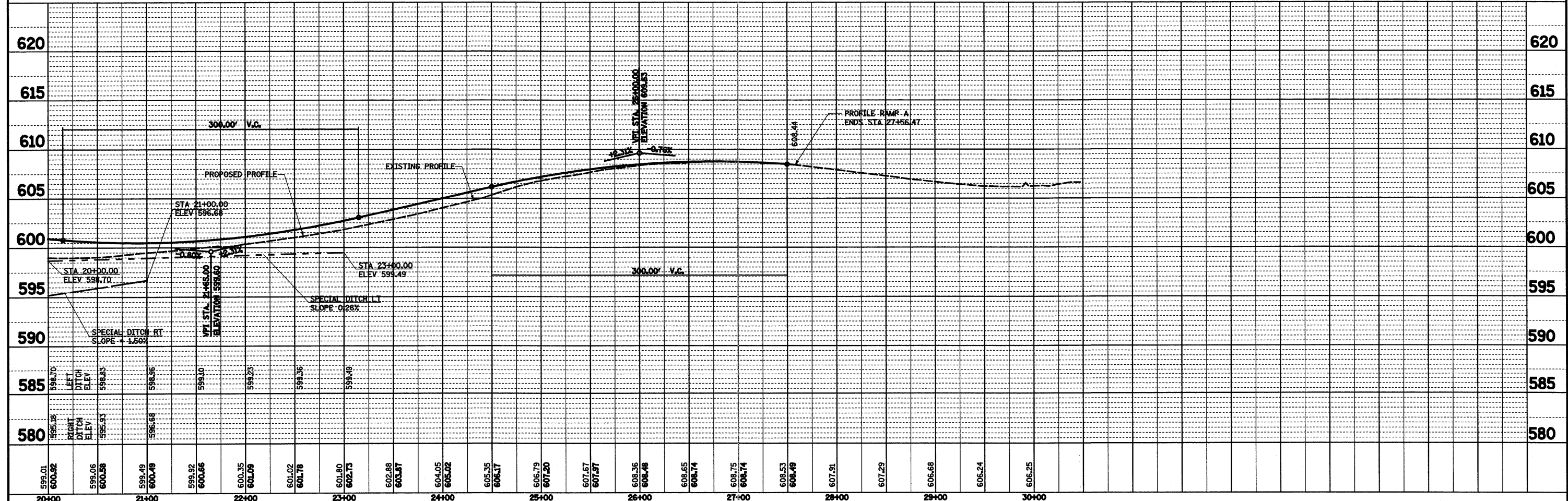
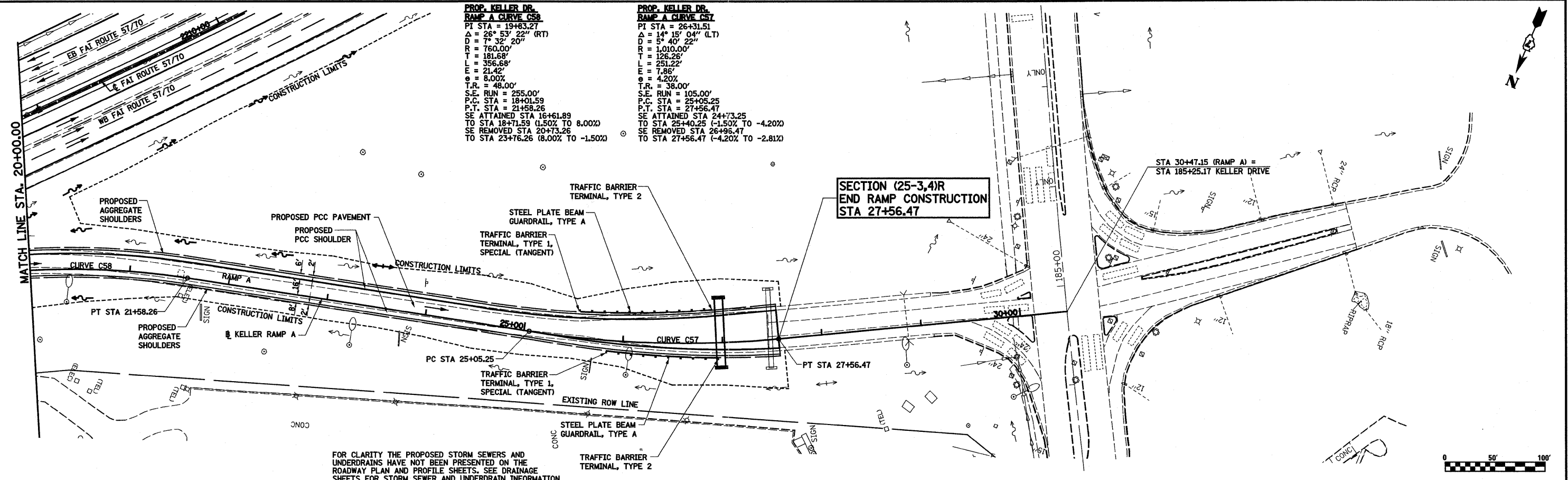


PLAN	SURVEYED	BY	DATE
	PLOTTED		
	GRADED		
	STRUCTURE		
	NOTATIONS		
	CHKD		
	NO.		
	NO.		
	NO.		
	NO.		

PROFILE	SURVEYED	BY	DATE
	PLOTTED		
	GRADED		
	STRUCTURE		
	NOTATIONS		
	CHKD		
	NO.		
	NO.		
	NO.		
	NO.		

PROP. KELLER DR. RAMP A CURVE C58
 PI STA = 19+83.27
 A = 28° 53' 22" (RT)
 D = 7° 32' 20"
 R = 760.00'
 T = 181.68'
 L = 356.68'
 E = 21.42'
 e = 8.00%
 T.R. = 48.00'
 S.E. RUN = 255.00'
 P.C. STA = 18+01.59
 P.T. STA = 21+58.26
 SE ATTAINED STA 18+61.89
 TO STA 18+71.59 (1.50% TO 8.00%)
 SE REMOVED STA 20+73.26
 TO STA 23+76.26 (8.00% TO -1.50%)

PROP. KELLER DR. RAMP A CURVE C57
 PI STA = 26+31.51
 A = 14° 15' 04" (LT)
 D = 5° 40' 22"
 R = 1,010.00'
 T = 126.26'
 L = 251.22'
 E = 7.86'
 e = 4.20%
 T.R. = 38.00'
 S.E. RUN = 105.00'
 P.C. STA = 25+05.25
 P.T. STA = 27+56.47
 SE ATTAINED STA 24+73.25
 TO STA 25+40.25 (-1.50% TO -4.20%)
 SE REMOVED STA 26+88.47
 TO STA 27+56.47 (-4.20% TO -2.81%)



FILE NAME =	USER NAME = bseibel	DESIGNED - JWS	REVISED -	STATE OF ILLINOIS DEPARTMENT OF TRANSPORTATION	PLAN AND PROFILE, RAMP A, KELLER DRIVE	F.A.I. RTE.	SECTION	COUNTY	TOTAL SHEETS	SHEET NO.	
S:\Projects\403-00072-57-70.dgn\Keller_VP_5770.dgn		DRAWN - PDB	REVISED -			57/70	(25-3,4)R	EFFINGHAM	1098	71	
PLOT SCALE = 1/8" = 1' IN.		CHECKED - BRM	REVISED -			SCALE: 1" = 50'		SHEET NO. 2 OF 8 SHEETS		STA. 20+00.00 TO STA. 27+56.47	
PLOT DATE = 3/18/2011		DATE - 6-5-08	REVISED -			FED. ROAD DIST. NO.		ILLINOIS FED. AID PROJECT		CONTRACT NO. 74299	