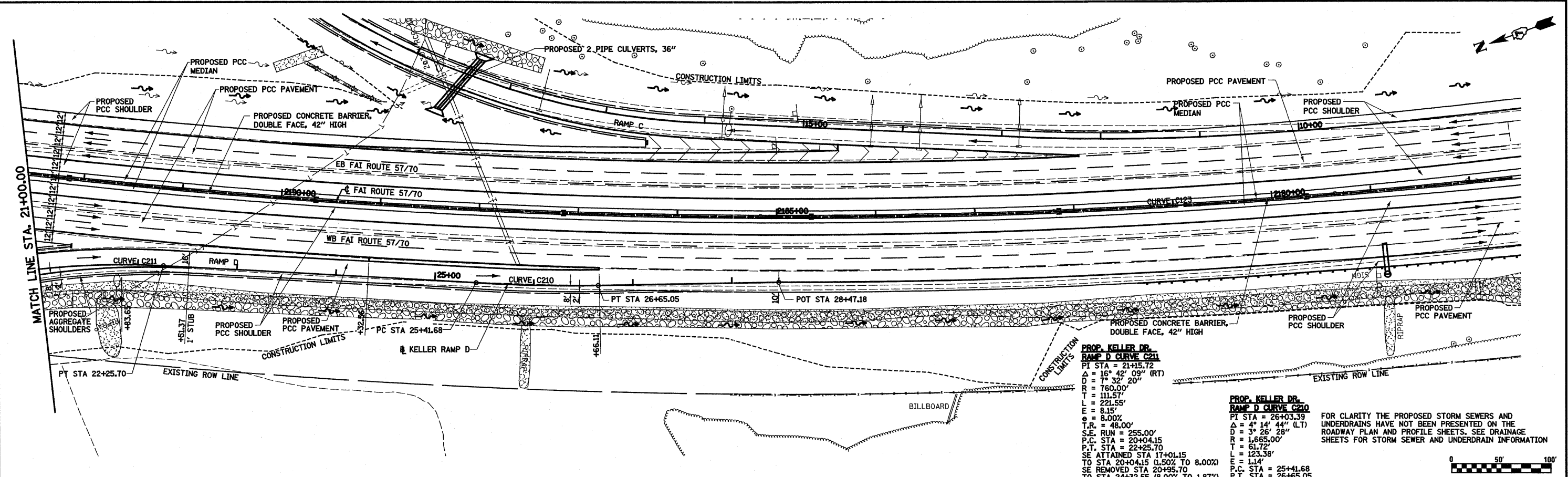


|      |                          |      |
|------|--------------------------|------|
| PLAN | SURVEYED                 | DATE |
|      | PLOTTED                  |      |
|      | GRADES CHECKED           |      |
|      | RT. OF WAY CHECKED       |      |
|      | NO. _____                |      |
|      | STRUCTURE NOTATIONS CHKD |      |
|      | NO. _____                |      |

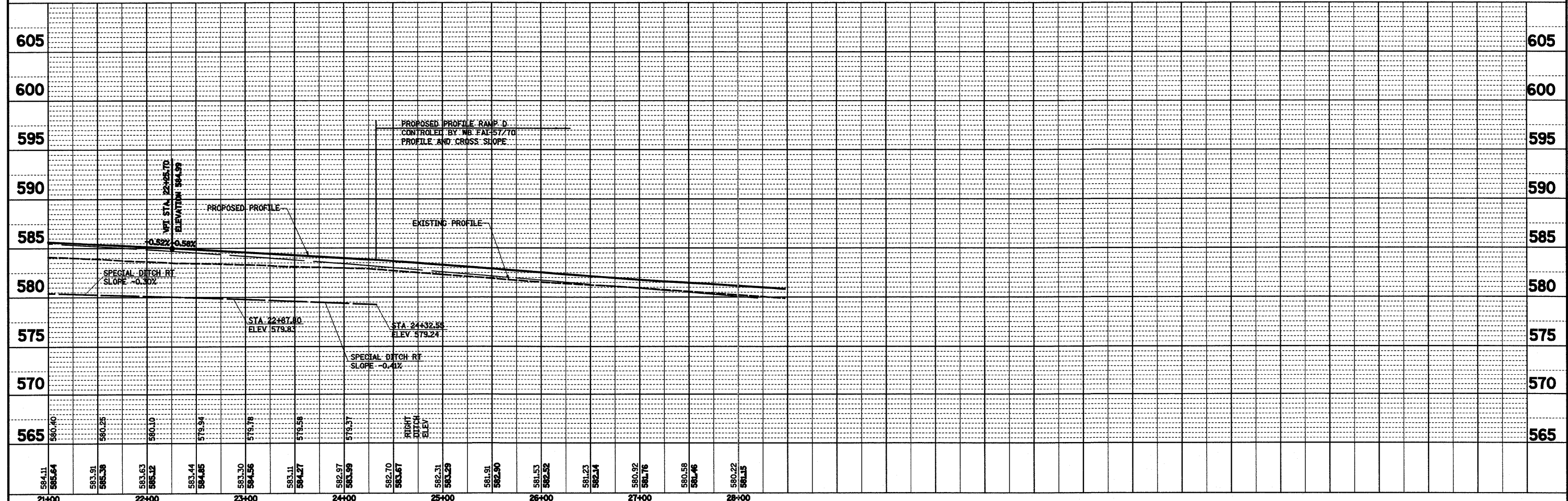
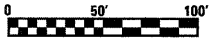
|         |                          |      |
|---------|--------------------------|------|
| PROFILE | SURVEYED                 | DATE |
|         | PLOTTED                  |      |
|         | GRADES CHECKED           |      |
|         | STRUCTURE NOTATIONS CHKD |      |
|         | NO. _____                |      |



**PROP. KELLER DR. RAMP D CURVE C211**  
 PI STA = 21+15.72  
 $\Delta = 16^\circ 42' 09''$  (RT)  
 $D = 7^\circ 32' 20''$   
 $R = 760.00'$   
 $T = 111.57'$   
 $L = 221.55'$   
 $E = 8.15'$   
 $\theta = 8.00\%$   
 $T.R. = 48.00'$   
 $S.E. RUN = 255.00'$   
 $P.C. STA = 20+04.15$   
 $P.T. STA = 22+25.70$   
 $SE ATTAINED STA 17+01.15$   
 $TO STA 20+04.15$  (1.50% TO 8.00%)  
 $SE REMOVED STA 20+95.70$   
 $TO STA 24+32.55$  (8.00% TO 1.87%)

**PROP. KELLER DR. RAMP D CURVE C210**  
 PI STA = 26+03.39  
 $\Delta = 4^\circ 14' 44''$  (LT)  
 $D = 3^\circ 26' 28''$   
 $R = 1,665.00'$   
 $T = 61.72'$   
 $L = 123.38'$   
 $E = 1.14'$   
 $P.C. STA = 25+41.68$   
 $P.T. STA = 26+65.05$

FOR CLARITY THE PROPOSED STORM SEWERS AND UNDERDRAINS HAVE NOT BEEN PRESENTED ON THE ROADWAY PLAN AND PROFILE SHEETS. SEE DRAINAGE SHEETS FOR STORM SEWER AND UNDERDRAIN INFORMATION



|  |                  |                |           |   |   |               |                         |                                |                     |                           |                    |
|--|------------------|----------------|-----------|---|---|---------------|-------------------------|--------------------------------|---------------------|---------------------------|--------------------|
| FILE NAME =  | USER NAME = John | DESIGNED - JWS | REVISED - | <b>STATE OF ILLINOIS</b><br><b>DEPARTMENT OF TRANSPORTATION</b> | <b>PLAN AND PROFILE, RAMP D, KELLER DRIVE</b> | F.A.I. RTE.   | SECTION                 | COUNTY                         | TOTAL SHEETS        | SHEET NO.                 |                    |
| svr\projects\403-00072-57-70\dgn\keller-ramp-d.pgn |                  | DRAWN - PDB    | REVISED - |   |   | 57/70         | (25-3,4R)               | EFFINGHAM                      | 1098                | 77                        |                    |
| PLOT SCALE = 100.0000' / IN.                       |                  | CHECKED - BRM  | REVISED - |   |   | SCALE: 1"=50' | SHEET NO. 8 OF 8 SHEETS | STA. 21+00.00 TO STA. 28+47.18 | FED. ROAD DIST. NO. | ILLINOIS FED. AID PROJECT | CONTRACT NO. 74299 |
| PLOT DATE = 3/19/2011                              |                  | DATE - 6-5-08  | REVISED - |   |   |               |                         |                                |                     |                           |                    |