

**FAI ROUTE 57/70 SEQUENCE OF CONSTRUCTION**

**PRE-STAGE 1:**

1. MAINTAIN TRAFFIC ON EXISTING ROADWAYS, INTERCHANGES AND RAMPS UNTIL SUCH TIME AS STAGE CONSTRUCTION OPERATIONS FOR THIS PROJECT ARE TO COMMENCE.
2. INSTALL APPROPRIATE TRAFFIC CONTROL AND PROTECTION AS SHOWN ON THE PLANS AND AS DIRECTED BY THE ENGINEER. SHIFT OR ADJUST TRAFFIC TO THE PRE-STAGE 1 TRAFFIC PATTERNS. ONE LANE OF TRAFFIC IN EACH DIRECTION SHALL BE MAINTAINED DURING WORKING HOURS. DURING NON-WORKING HOURS TRAFFIC CONTROL DEVICES SHALL BE PULLED BACK TO THE SHOULDER AREA AND EXISTING TRAFFIC PATTERNS MAINTAINED AT ALL TIMES. BEGIN PRE-STAGE 1 CONSTRUCTION OPERATIONS AS FOLLOWS:
3. CONSTRUCT WIDENING WITH CONCRETE PAVEMENT ALONG OUTSIDE EDGES OF THE MAINLINE PAVEMENTS AND RAMPS AS SHOWN ON THE PLANS. CONSTRUCTION OPERATIONS ARE RESTRICTED DURING THIS STAGE. SEE SPECIAL PROVISIONS.
  - ADJUST ANY EXISTING GUARDRAIL INSTALLATIONS AS INDICATED.

**STAGE 1:**

1. SHIFT TRAFFIC TO THE STAGE 1 TRAFFIC PATTERN AS INDICATED WITH TWO LANES OF TRAFFIC IN EACH DIRECTION ON THE EXISTING MAINLINE PAVEMENT AND ONE LANE OF TRAFFIC ON ALL RAMPS AT THE VARIOUS INTERCHANGES THROUGHOUT THIS CONSTRUCTION SECTION.
2. BEGIN STAGE 1 CONSTRUCTION OPERATIONS AS FOLLOWS:
  - CONSTRUCT PROPOSED EMBANKMENTS AND GRADING OPERATIONS, DRAINAGE STRUCTURES AND STORM SEWERS, PAVEMENT SHOULDERS, CONCRETE MEDIAN BARRIER AND CONCRETE MEDIAN SURFACE AS SHOWN ON PLANS.
  - CONSTRUCT TEMPORARY CONCRETE PAVEMENT IN THE RAMPS B AND E GORE OF THE KELLER DRIVE INTERCHANGE AS SHOWN ON PLANS.
  - CONSTRUCT CENTER PIER AT BIKE TRAIL STRUCTURE (SEE BRIDGE PLANS FOR DETAILS).

**PRE-STAGE 2A:**

1. ADJUST TRAFFIC CONTROL AND PROTECTION TO SHIFT MAINLINE TRAFFIC TO THE MEDIAN PAVEMENT AND SHOULDERS CONSTRUCTED IN STAGE 1. RAMP TRAFFIC FOR THE FAYETTE AVENUE AND IL ROUTES 32/33 (KELLER DRIVE) INTERCHANGES WILL BE MAINTAINED ON THE OUTSIDE STAGE 1 PATTERN OF THE MAINLINE PAVEMENT. THIS LANE WILL FUNCTION AS A COLLECTOR DISTRIBUTOR LANE AND WILL BE MAINTAINED DURING THIS STAGE THROUGHOUT THE LIMITS OF THIS CONSTRUCTION SECTION.
2. BEGIN THE PRE-STAGE 2A CONSTRUCTION OPERATIONS AS FOLLOWS:
  - REMOVE THE EXISTING INSIDE MAINLINE PAVEMENT AT THE INTERCHANGE RAMPS AS INDICATED.
  - CONSTRUCT TEMPORARY TRANSITION PAVEMENT AND THE PROPOSED PERMANENT PCC PAVEMENTS AT THE INTERCHANGE RAMPS AS SHOWN ON PLANS.

**PRE-STAGE 2B:**

- ADJUST THE TRAFFIC CONTROL AND PROTECTION AND SHIFT THE TEMPORARY COLLECTOR DISTRIBUTOR LANE ESTABLISHED IN PRE-STAGE 2A TO THE INSIDE ON THE TEMPORARY TRANSITION PAVEMENT AND PERMANENT PAVEMENT CONSTRUCTED IN PRE-STAGE 2A AT THE INTERCHANGE RAMPS AS SHOWN ON THE PLANS.
- CONSTRUCT THE PROPOSED PERMANENT PCC PAVEMENT ADJACENT TO THE MAINLINE PAVEMENT CONSTRUCTED IN PRE-STAGE 2A AND AT RAMP E OF THE IL ROUTE 32/33 (KELLER DRIVE) INTERCHANGE AS SHOWN ON PLANS.
- CONSTRUCT TEMPORARY DRAINAGE AND TEMPORARY CONNECTORS AT FAYETTE AND KELLER RAMPS.

**STAGE 2:**

1. ADJUST TRAFFIC CONTROL AND SHIFT ALL TRAFFIC ONTO NEWLY CONSTRUCTED PROPOSED PAVEMENT AND SHOULDERS ESTABLISHED IN PRE-STAGES 2A AND 2B, THE TEMPORARY RAMP CONNECTOR PAVEMENTS AND EXISTING RAMP PAVEMENTS AS SHOWN ON THE PLANS.
2. BEGIN STAGE 2 CONSTRUCTION OPERATIONS AS FOLLOWS:
  - REMOVE EXISTING PAVEMENT AND SHOULDERS FOR THE STAGE 2 CONSTRUCTION OPERATIONS.
  - CONSTRUCT PROPOSED EMBANKMENT, PERFORM GRADING OPERATIONS, AND COMPLETE CONSTRUCTION OF THE PROPOSED DRAINAGE ON THE STAGE 2 SIDE OF THE MAINLINE, FAYETTE RAMPS A AND B, RAMPS AT THE IL 32/33 (KELLER DRIVE) INTERCHANGE AND BIKE TRAIL AS SHOWN ON PLANS.
  - CONSTRUCT STAGE 2 PORTION OF CULVERT AT FAYETTE RAMP A.
  - CONSTRUCT BIKE TRAIL STRUCTURE (SEE BRIDGE PLANS FOR DETAILS).
  - CONSTRUCT THE HMA SURFACE TRANSITION AT STATION 2268+00.00

**STAGE 3:**

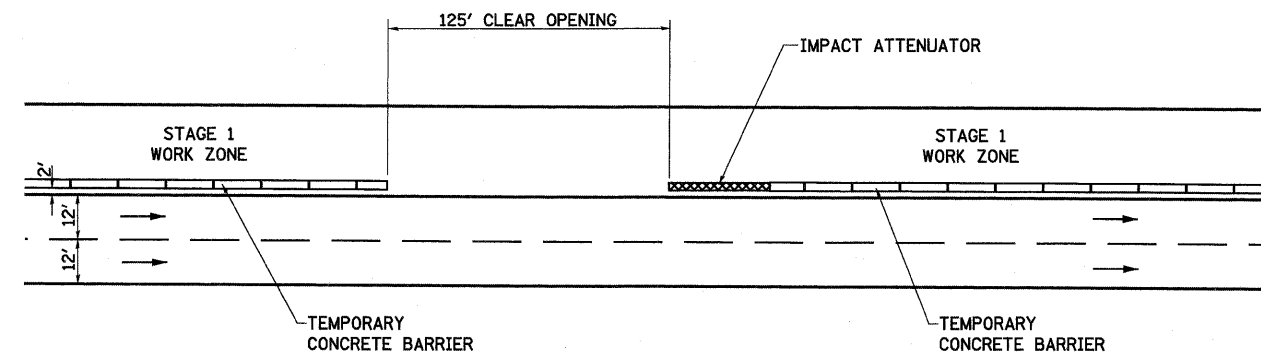
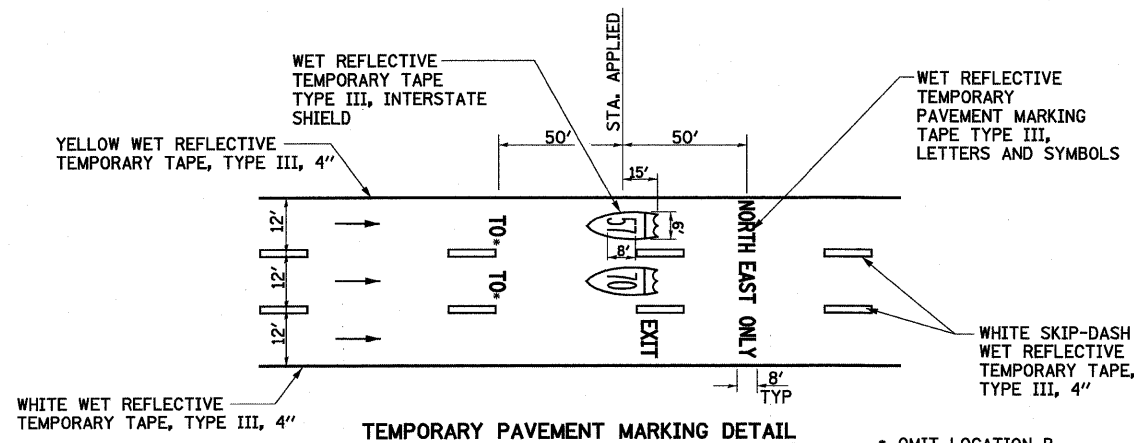
1. ADJUST TRAFFIC CONTROL AND PROTECTION AND SHIFT THE MAINLINE FAI 57/70 AND FAYETTE AVENUE INTERCHANGE TRAFFIC TO THE ULTIMATE TRAFFIC PATTERN. SHIFT THE RAMPS AT THE IL 32/33 (KELLER DRIVE) INTERCHANGE TO THE STAGE 3 TRAFFIC PATTERN.
2. BEGIN STAGE 3 CONSTRUCTION OPERATIONS AS FOLLOWS:
  - CONSTRUCT THE REMAINING PORTION OF THE PROPOSED PAVEMENT AND SHOULDERS OF THE RAMP ROADWAYS.
  - REMOVE TEMPORARY CONNECTORS AT FAYETTE AND KELLER RAMPS.
  - CONSTRUCT STAGE 3 PORTION OF CULVERT AT FAYETTE RAMP A.
3. ADJUST THE RAMP TRAFFIC CONTROL AND PROTECTION AND SHIFT ALL IL 32/33 (KELLER DRIVE) INTERCHANGE TO THE ULTIMATE TRAFFIC PATTERN.
4. COMPLETE ALL REMAINING ITEMS OF WORK

**GENERAL STAGING NOTES:**

1. CONSTRUCTION OPERATIONS FOR THIS PROJECT ARE SUBJECT TO STAGE CONSTRUCTION OPERATIONS AS SHOWN ON THE PLANS AND AS OUTLINED IN THE SEQUENCE OF CONSTRUCTION.
2. THE CONTRACTOR SHALL MAINTAIN EXISTING TRAFFIC PATTERNS THROUGHOUT OR AROUND THE PROJECT BY MEANS OF THE EXISTING PAVEMENT, TEMPORARY PAVEMENTS, TRANSITION PAVEMENTS, CONNECTOR PAVEMENTS, AND THE PROPOSED PAVEMENTS AS SHOWN ON THE PLANS.
3. DURING THE PRE-STAGE 1 CONSTRUCTION OPERATIONS FOR THIS PROJECT, THE CONTRACTOR MAY RESTRICT THE MAINLINE TRAFFIC TO ONE LANE IN EACH DIRECTION DURING WORKING HOURS ONLY. AT ALL OTHER TIMES, TWO LANES OF TRAFFIC MUST BE MAINTAINED AS SHOWN ON THE PLANS AND AS DIRECTED BY THE ENGINEER.
4. ADEQUATE DRAINAGE SHALL BE MAINTAINED AS SHOWN IN THE PLANS OR AS DIRECTED BY THE ENGINEER.
5. A FLAGMAN SHALL BE REQUIRED IN ADVANCE OF ANY WORK AREA WHERE CONSTRUCTION VEHICLES ARE FREQUENTLY ENTERING OR LEAVING THE WORK SITE AND AT LOCATIONS DESIGNATED BY THE ENGINEER. COST OF THE FLAGMAN IS INCLUDED IN THE ASSOCIATED TRAFFIC CONTROL PAY ITEM.
6. THE STAGE CONSTRUCTION DRAWINGS PROVIDE FOR TEMPORARY SIGNS. IT MAY BE NECESSARY TO RELOCATE AND/OR REINSTALL TEMPORARY OR EXISTING SIGNS AS DIRECTED BY THE ENGINEER. COST INCLUDED IN THE ASSOCIATED TRAFFIC CONTROL PAY ITEM.
7. CONSTRUCTION SIGNS INDICATED FOR STAGE CONSTRUCTION SHALL BE INSTALLED ON MAINLINE OR CROSSING ROADWAYS HAVING DIRECT ACCESS WHEN CONSTRUCTION OPERATIONS ARE INITIATED AND SHALL BE PROPERLY MAINTAINED THROUGHOUT EACH CONSTRUCTION STAGE.
8. ALL STATIONS AND OFFSETS SHOWN ARE TO PROPOSED ALIGNMENTS UNLESS OTHERWISE INDICATED.
9. ALL SIGNS TO BE INSTALLED ON HARD SURFACES SHALL BE MOUNTED ON PORTABLE SKIDS OR TRIPODS MEETING THE APPROVAL OF THE ENGINEER.
10. ANY PREPARATION NEEDED TO CROSS INTO WORK ZONE WILL BE AT CONTRACTOR'S EXPENSE.
11. FLOW LINES OF ALL TEMPORARY DRAINAGE ITEMS SHALL BE AS DIRECTED BY THE ENGINEER.
12. THE FIRST TWO WARNING SIGNS ON EACH APPROACH TO THE WORK INVOLVING NIGHTTIME LANE CLOSURE SHALL HAVE FLASHING MONODIRECTIONAL LIGHTS IN ACCORDANCE WITH ARTICLE 701.16.
13. ALL TEMPORARY PAVEMENTS ARE PORTLAND CEMENT CONCRETE PAVEMENT 12" WITH PAVEMENT FABRIC.
14. FOR TRAFFIC CONTROL DETAILS NOT SPECIFICALLY SHOWN ON THE MAINTENANCE OF TRAFFIC PLANS, SEE THE APPROPRIATE HIGHWAY STANDARD.
15. ANY REFERENCE TO TEMPORARY PAVEMENT MARKING IN THE MAINTENANCE OF TRAFFIC PLANS SHALL MEAN WET REFLECTIVE TEMPORARY TAPE, TYPE III.
16. ANY REFERENCE TO IMPACT ATTENUATOR IN THE MAINTENANCE OF TRAFFIC PLANS SHALL MEAN IMPACT ATTENUATORS, TEMPORARY (NON-REDIRECTIVE), TEST LEVEL 3 OR IMPACT ATTENUATORS, RELOCATE (NON-REDIRECTIVE), TEST LEVEL 3 AS SHOWN ON THE SCHEDULE.
17. ANY TRAFFIC CONTROL SIGNS FOR ANY TRAFFIC OPERATION FOR THIS PROJECT IN ACCORDANCE WITH ARTICLE 701.04 THAT DO NOT APPLY TO THE SPECIFIC TRAFFIC CONDITION SHALL BE REMOVED, COVERED OR TURNED FROM VIEW OF MOTORISTS. THIS ALSO APPLIES TO TRAFFIC CONTROL TO BE MAINTAINED UNDER THIS PROJECT.
18. A QUANTITY OF 200 SQ YD OF PAVEMENT PATCHING (PARTIAL DEPTH), 70 TONS OF HOT-MIX ASPHALT FOR PATCHING, AND 50 SQ YD OF PAVEMENT PATCHING (FULL DEPTH) AS BEEN INCLUDED IN THE CONTRACT FOR PATCHING OPERATIONS, WHEN DIRECTED BY THE ENGINEER, FOR STAGE CONSTRUCTION OPERATIONS.

**INDEX OF SHEETS**

81	SEQUENCE OF CONSTRUCTION, GENERAL STAGING NOTES, AND INDEX OF SHEETS
82-85	APPROACH TO LANE CLOSURE DETAILS
86-90	ALTERNATE ROUTE DETOUR DETAILS
91-100	MAINTENANCE OF TRAFFIC AND PRE-STAGE 1 CONSTRUCTION DETAILS
101-110	MAINTENANCE OF TRAFFIC AND STAGE 1 CONSTRUCTION DETAILS
111-124	MAINTENANCE OF TRAFFIC AND PRE-STAGE 2A CONSTRUCTION DETAILS
125-136	MAINTENANCE OF TRAFFIC AND PRE-STAGE 2B CONSTRUCTION DETAILS
137-146	MAINTENANCE OF TRAFFIC AND STAGE 2 CONSTRUCTION DETAILS
147-150	MAINTENANCE OF TRAFFIC AND STAGE 3 CONSTRUCTION DETAILS
711-1044	MOT CROSS SECTIONS - FAI-57/70
1045-1051	MOT CROSS SECTIONS - TEMPORARY CONNECTOR FAYETTE RAMP B
1052-1054	MOT CROSS SECTIONS - TEMPORARY CONNECTOR FAYETTE RAMP D
1055-1076	MOT CROSS SECTIONS - KELLER DRIVE RAMP A
1077-1088	MOT CROSS SECTIONS - KELLER DRIVE RAMP C
1089-1098	MOT CROSS SECTIONS - KELLER DRIVE RAMP D



**CONTRACTOR ACCESS OPENING TYPICAL APPLICATION**

SEE SPECIAL PROVISIONS

FILE NAME =	USER NAME = bctaj	DESIGNED - JWS	REVISED - 10-20-11	<b>STATE OF ILLINOIS DEPARTMENT OF TRANSPORTATION</b>	<b>FAI ROUTE 57/70, SEQUENCE OF CONSTRUCTION</b>			F.A.I. RTE.	SECTION	COUNTY	TOTAL SHEETS	SHEET NO.
SA\Projects\403-00072-57-70\dgn\ML_Keller\seq_constr.dgn		DRAWN - PDB	REVISED -					57/70	(25-3,4R)	EFFINGHAM	1098	81
PLOT SCALE = 1/8" = 100'-0" IN.		CHECKED - BRM	REVISED -					<b>CONTRACT NO. 74299</b>				
PLOT DATE = 11/22/2011		DATE - 4-21-09	REVISED -					FED. ROAD DIST. NO. ILLINOIS FED. AID PROJECT				
				SCALE:	SHEET NO. 1 OF 1 SHEETS	STA.	TO STA.					