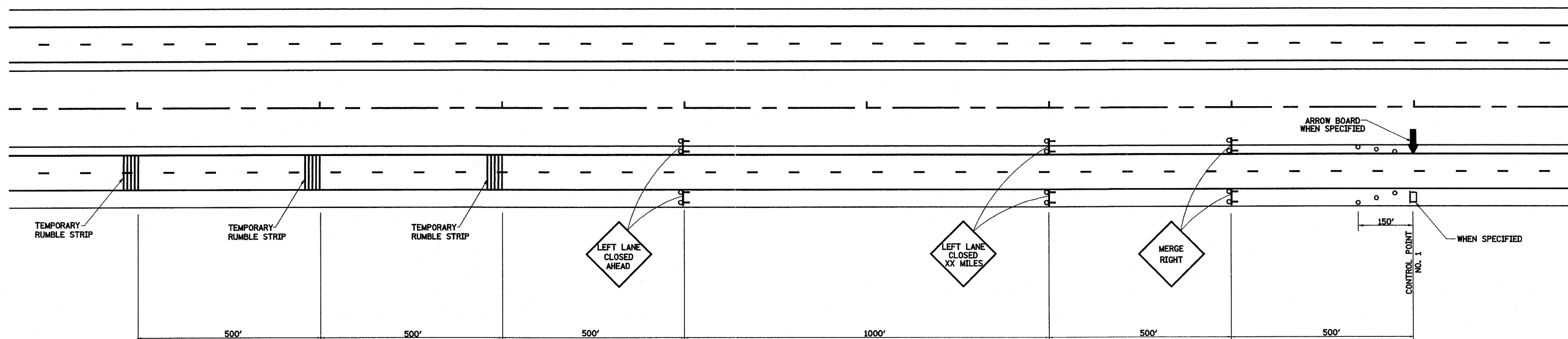


APPROACH TO LANE CLOSURE DETAIL

LOCATION	STATION
SOUTH TRI-LEVEL	
I-57 ROADWAY D	5015+00
I-70 WEST APPROACH	1997+00
NORTH TRI-LEVEL	
I-57 NORTH APPROACH	5400+40
I-70 EAST APPROACH	2413+00

SEE SCHEDULES FOR ROADWAY AND STATION CONTROL



LEGEND

- ↑ ARROW BOARD
- ⊕ TYPE III BARRICADE WITH 2 HIGH INTENSITY FLASHING LIGHTS
- CHANGEABLE MESSAGE SIGN, SPECIAL
- TYPE I OR II BARRICADE WITH MONODIRECTIONAL FLASHING LIGHTS

TRAFFIC CONTROL AND PROTECTION CASE NO. I

GENERAL NOTES

APPROACH TO LANE CLOSURE IS TO BE USED WHERE A LANE IS CLOSED ON A FREEWAY/EXPRESSWAY FOR AN EXTENDED DURATION DURING STAGE CONSTRUCTION. WHEN THE RIGHT LANE IS CLOSED, RIGHT LANE CLOSED SIGNS SHALL BE SUBSTITUTED FOR THE LEFT LANE CLOSED SIGNS.

FOR INFORMATION ONLY

FILE NAME =	USER NAME = linds	DESIGNED JWS		STATE OF ILLINOIS DEPARTMENT OF TRANSPORTATION	APPROACH TO LANE CLOSURE FAI ROUTE 57/70		F.A.I. RTE. 57/70	SECTION (25-3,4)R	COUNTY EFFINGHAM	TOTAL SHEETS 1098	SHEET NO. 84	
SA\Projects\403-00072-57-70\dgn\ML_Keller\Approach Sign Lane Closure.dgn		DRAWN - PDB	REVISED -		SCALE:	SHEET NO. 3 OF 4 SHEETS	STA. TO STA.	CONTRACT NO. 74299				
PLOT SCALE = 200.0000' / IN.		CHECKED - BRM	REVISED -		FED. ROAD DIST. NO. ILLINOIS FED. AID PROJECT							
PLOT DATE = 3/17/2011		DATE - 10-19-10	REVISED -									