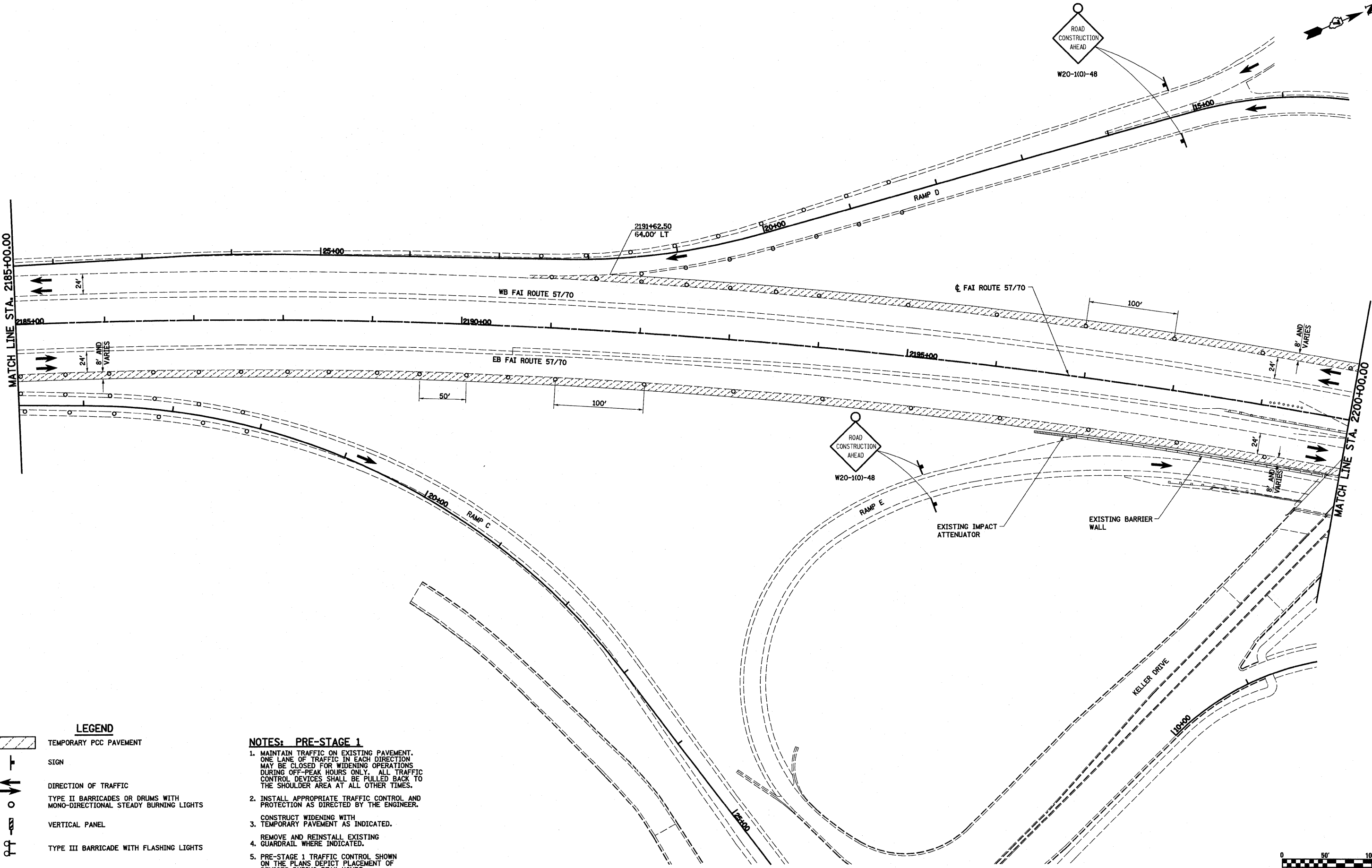
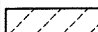

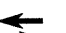


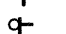


MATCH LINE STA. 2185+00.00

MATCH LINE STA. 2200+00.00



LEGEND

-  TEMPORARY PCC PAVEMENT
-  SIGN
-  DIRECTION OF TRAFFIC
-  TYPE II BARRICADES OR DRUMS WITH MONO-DIRECTIONAL STEADY BURNING LIGHTS
-  VERTICAL PANEL
-  TYPE III BARRICADE WITH FLASHING LIGHTS

NOTES: PRE-STAGE 1

1. MAINTAIN TRAFFIC ON EXISTING PAVEMENT. ONE LANE OF TRAFFIC IN EACH DIRECTION MAY BE CLOSED FOR WIDENING OPERATIONS DURING OFF-PEAK HOURS ONLY. ALL TRAFFIC CONTROL DEVICES SHALL BE PULLED BACK TO THE SHOULDER AREA AT ALL OTHER TIMES.
2. INSTALL APPROPRIATE TRAFFIC CONTROL AND PROTECTION AS DIRECTED BY THE ENGINEER.
3. CONSTRUCT WIDENING WITH TEMPORARY PAVEMENT AS INDICATED.
4. REMOVE AND REINSTALL EXISTING GUARDRAIL WHERE INDICATED.
5. PRE-STAGE 1 TRAFFIC CONTROL SHOWN ON THE PLANS DEPICT PLACEMENT OF DEVICES DURING PEAK HOURS.

FILE NAME =	USER NAME = boesbe1	DESIGNED - ESW	REVISED -
S:\Projects\403-00072.57-70\dgn\ML_Keller\mot_P5.dgn		DRAWN - PDB	REVISED -
	PLOT SCALE = 100.0000' / IN.	CHECKED - BRM	REVISED -
	PLOT DATE = 3/18/2011	DATE - 4-28-08	REVISED -

**STATE OF ILLINOIS
DEPARTMENT OF TRANSPORTATION**

MAINTENANCE OF TRAFFIC, PRE-STAGE 1, FAI ROUTE 57/70

SCALE: 1"=50' SHEET NO. 6 OF 10 SHEETS STA. 2185+00.00 TO STA. 2200+00.00

F.A.I. RTE.	SECTION	COUNTY	TOTAL SHEETS	SHEET NO.
57/70	(25-3,4)R	EFFINGHAM	1098	96
CONTRACT NO. 74299				
FED. ROAD DIST. NO.		ILLINOIS FED. AID PROJECT		

