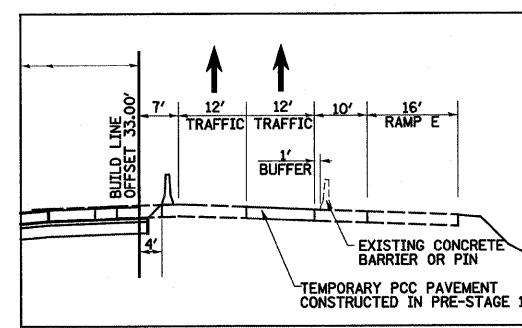
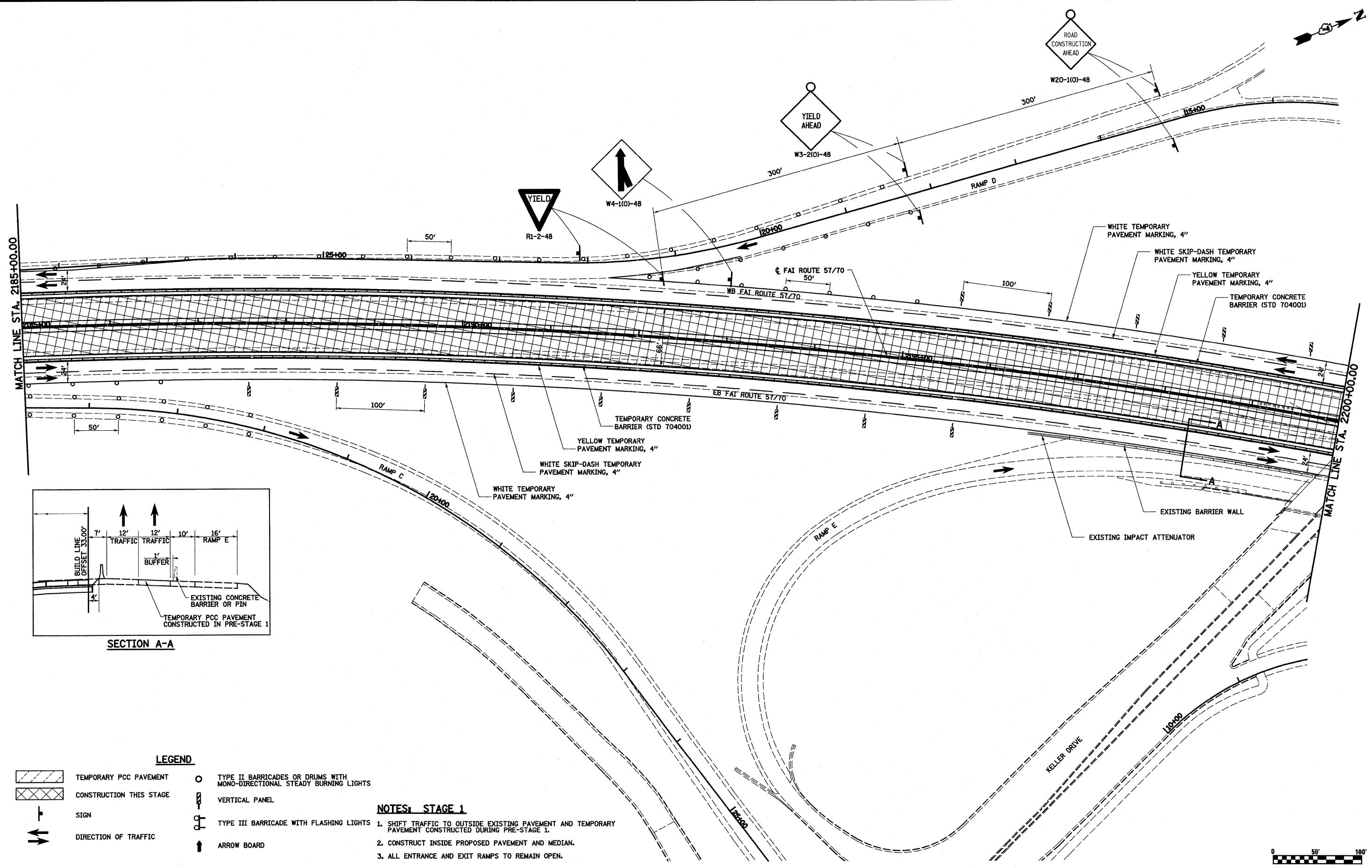


MATCH LINE STA. 2185+00.00

MATCH LINE STA. 2200+00.00



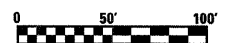
SECTION A-A

LEGEND

- TEMPORARY PCC PAVEMENT
- CONSTRUCTION THIS STAGE
- SIGN
- DIRECTION OF TRAFFIC
- TYPE II BARRICADES OR DRUMS WITH MONO-DIRECTIONAL STEADY BURNING LIGHTS
- VERTICAL PANEL
- TYPE III BARRICADE WITH FLASHING LIGHTS
- ARROW BOARD

NOTES: STAGE 1

1. SHIFT TRAFFIC TO OUTSIDE EXISTING PAVEMENT AND TEMPORARY PAVEMENT CONSTRUCTED DURING PRE-STAGE 1.
2. CONSTRUCT INSIDE PROPOSED PAVEMENT AND MEDIAN.
3. ALL ENTRANCE AND EXIT RAMPS TO REMAIN OPEN.



FILE NAME =
S:\Projects\403-00072.57-70\dgn\ML_Keller\mot_51.dgn

PLOT SCALE = 1/80,000 "/> IN.
PLOT DATE = 3/18/2011

DESIGNED - ESW
DRAWN - PDB
CHECKED - BRM
DATE - 4-28-08

REVISED -
REVISED -
REVISED -
REVISED -

**STATE OF ILLINOIS
DEPARTMENT OF TRANSPORTATION**

MAINTENANCE OF TRAFFIC, STAGE 1, FAI ROUTE 57/70

SCALE: 1"=50' SHEET NO. 6 OF 10 SHEETS STA. 2185+00.00 TO STA. 2220+00.00

F.A.I. RTE. 57/70	SECTION (25-3,4)R	COUNTY EFFINGHAM	TOTAL SHEETS 1098	SHEET NO. 106
FED. ROAD DIST. NO. ILLINOIS FED. AID PROJECT			CONTRACT NO. 74299	