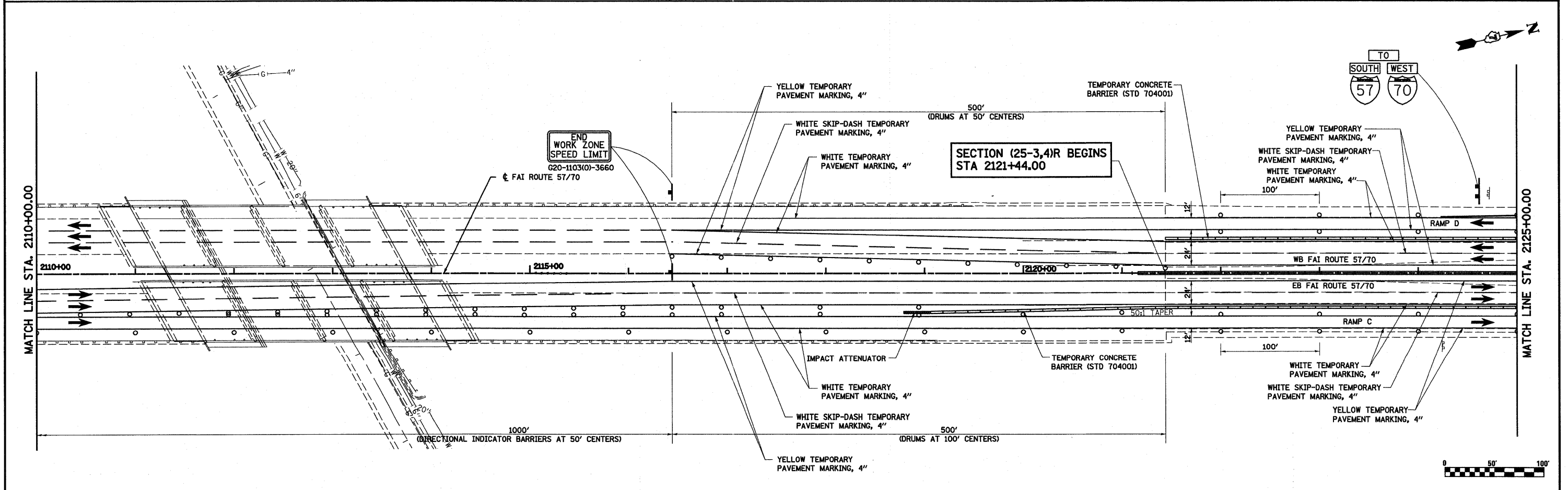


- NOTES: PRE-STAGE 2B**
- SHIFT ALL TRAFFIC EXITING AT FAYETTE AVE OR IL 32 & IL 33 TO FAR RIGHT LANE. SHIFT REMAINING THROUGH 57/70 TRAFFIC TO INSIDE SHOULDER PAVEMENT.
 - CONSTRUCT PAVEMENT, PROPOSED PAVEMENT AND SHOULDER AND TEMPORARY RAMP CONNECTOR AT EACH RAMP TERMINAL. CONSTRUCT WIDENING ON KELLER RAMPS.



FILE NAME =	USER NAME = paul	DESIGNED - ESW	REVISED - 4-27-11	STATE OF ILLINOIS DEPARTMENT OF TRANSPORTATION	MAINTENANCE OF TRAFFIC, PRE-STAGE 2B, FAYETTE AVE	F.A. RTE.	SECTION	COUNTY	TOTAL SHEETS	SHEET NO.	
S:\Projects\103-00072-57-70\log\ML_Keller_Misc Revs	4-29-2011\mof.P52b_Rev 4-29-11.dgn	DRAWN - PDB	REVISED -			57/70	(25-3,4)R	EFFINGHAM	1098	125	
		CHECKED - BRM	REVISED -			CONTRACT NO. 74299					
		DATE - 5-07-08	REVISED -			FED. ROAD DIST. NO. ILLINOIS FED. AID PROJECT					