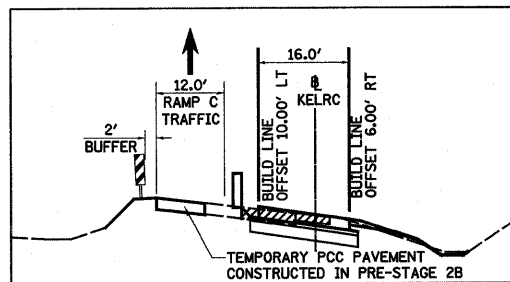
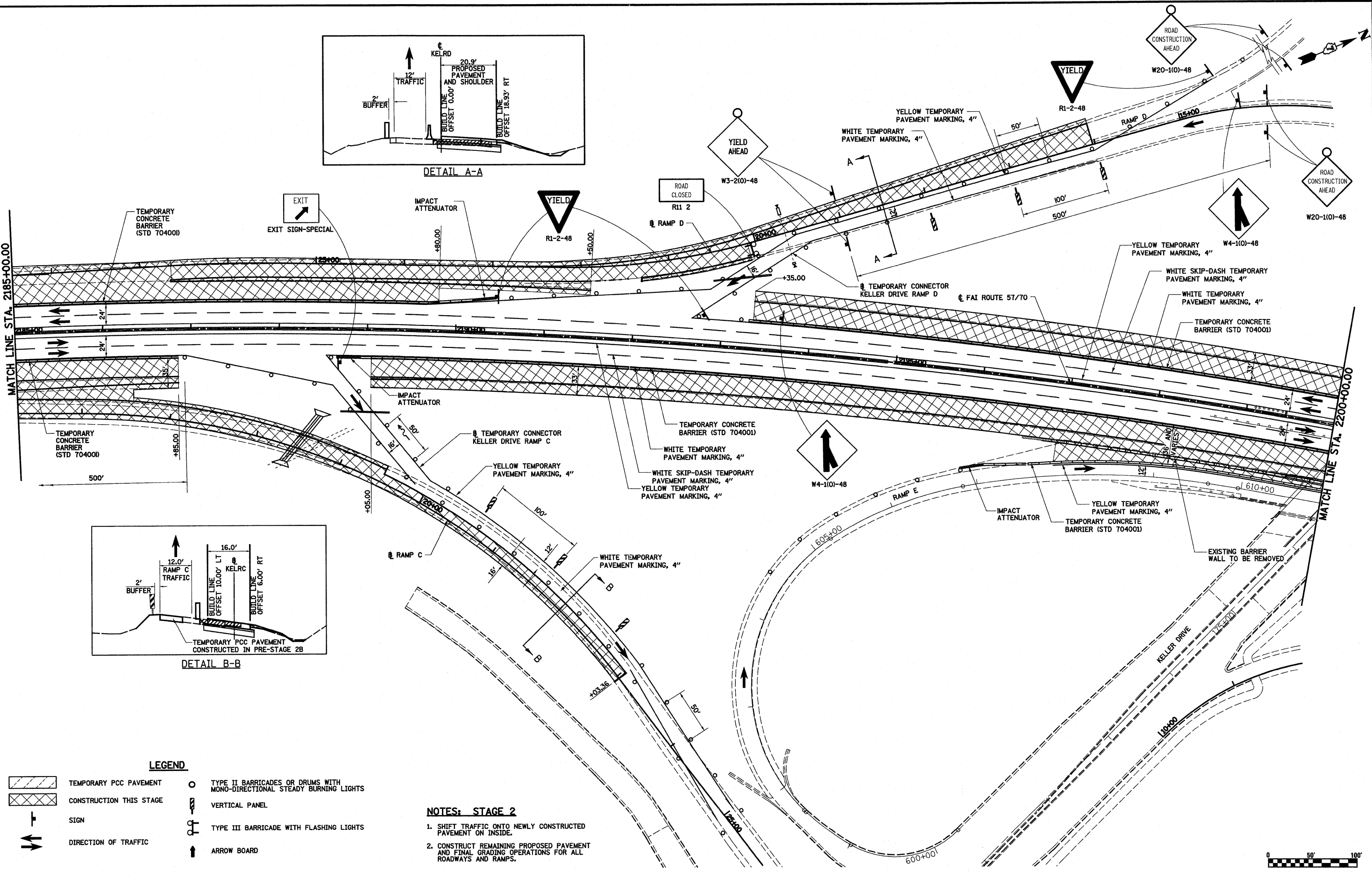


DETAIL A-A



DETAIL B-B



LEGEND

- TEMPORARY PCC PAVEMENT
- CONSTRUCTION THIS STAGE
- SIGN
- DIRECTION OF TRAFFIC
- TYPE II BARRICADES OR DRUMS WITH MONO-DIRECTIONAL STEADY BURNING LIGHTS
- VERTICAL PANEL
- TYPE III BARRICADE WITH FLASHING LIGHTS
- ARROW BOARD

NOTES: STAGE 2

1. SHIFT TRAFFIC ONTO NEWLY CONSTRUCTED PAVEMENT ON INSIDE.
2. CONSTRUCT REMAINING PROPOSED PAVEMENT AND FINAL GRADING OPERATIONS FOR ALL ROADWAYS AND RAMPS.

S:\Projects\403-00072-51-70\dgn\ML_Keller\wpof_S2.dgn PLOT SCALE = 1/80.0000" / IN. PLOT DATE = 3/28/2011	DESIGNED - ESW	REVISED -	STATE OF ILLINOIS DEPARTMENT OF TRANSPORTATION	MAINTENANCE OF TRAFFIC, STAGE 2, FAI ROUTE 57/70	F.A.I. RTE. 57/70	SECTION (25-3,4)R	COUNTY EFFINGHAM	TOTAL SHEETS 1098	SHEET NO. 142
	DATE - 4-29-08	REVISIONS -			SCALE: 1"=50'	SHEET NO. 6 OF 10 SHEETS	STA. 2185+00.00 TO STA. 2220+00.00	CONTRACT NO. 74299	