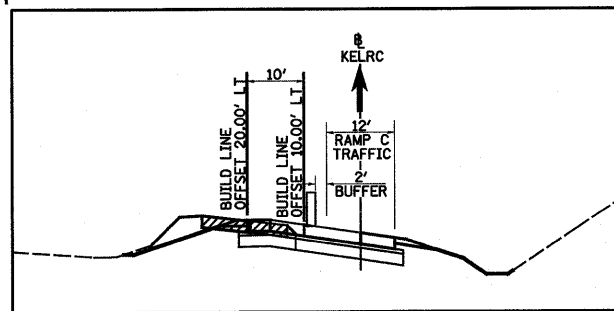
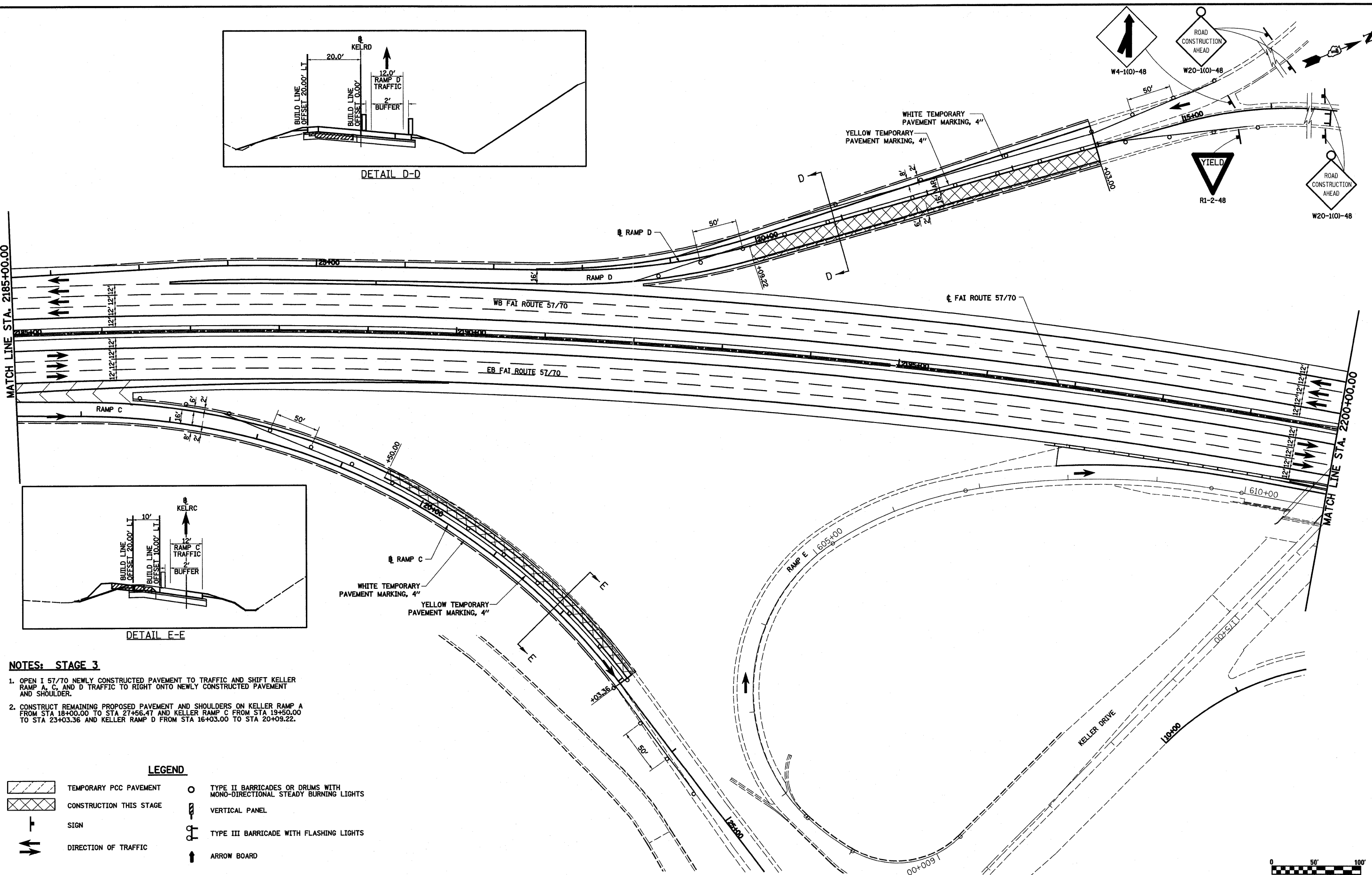


DETAIL D-D



DETAIL E-E



NOTES: STAGE 3

1. OPEN I 57/70 NEWLY CONSTRUCTED PAVEMENT TO TRAFFIC AND SHIFT KELLER RAMP A, C, AND D TRAFFIC TO RIGHT ONTO NEWLY CONSTRUCTED PAVEMENT AND SHOULDER.
2. CONSTRUCT REMAINING PROPOSED PAVEMENT AND SHOULDERS ON KELLER RAMP A FROM STA 18+00.00 TO STA 27+56.47 AND KELLER RAMP C FROM STA 19+50.00 TO STA 23+03.36 AND KELLER RAMP D FROM STA 16+03.00 TO STA 20+09.22.

LEGEND

- TEMPORARY PCC PAVEMENT
- CONSTRUCTION THIS STAGE
- SIGN
- DIRECTION OF TRAFFIC
- TYPE II BARRICADES OR DRUMS WITH MONO-DIRECTIONAL STEADY BURNING LIGHTS
- VERTICAL PANEL
- TYPE III BARRICADE WITH FLASHING LIGHTS
- ARROW BOARD

S:\Projects\403-00072-57-70\dgn\ML_Keller\asot_53.dgn
 PLOT SCALE = 1/800.0000 "/> IN.
 PLOT DATE = 3/18/2011

DESIGNED - ESW
 DRAWN - PDB
 CHECKED - BMJ
 DATE - 4-29-08

REVISED -
 REVISED -
 REVISED -
 REVISED -

**STATE OF ILLINOIS
 DEPARTMENT OF TRANSPORTATION**

MAINTENANCE OF TRAFFIC, STAGE 3, FAI ROUTE 57/70

SCALE: 1"=50' SHEET NO. 2 OF 4 SHEETS STA. 2185+00.00 TO STA. 2220+00.00

F.A.I. RTE. 57/70	SECTION (25-3,4)R	COUNTY EFFINGHAM	TOTAL SHEETS 1098	SHEET NO. 148
FED. ROAD DIST. NO. ILLINOIS FED. AID PROJECT				
CONTRACT NO. 74299				