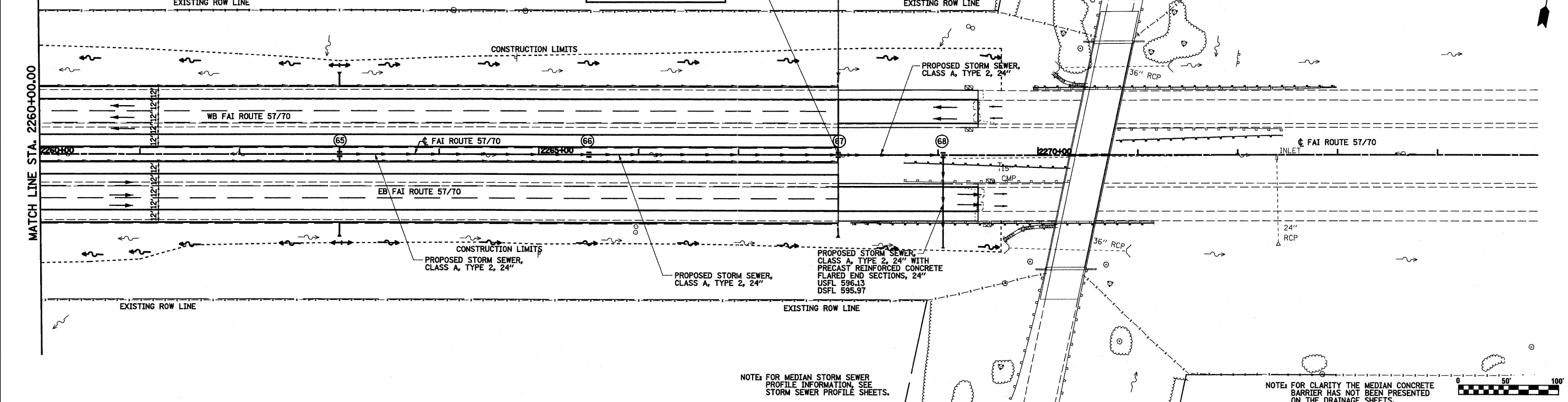


(65) STA 2263+00.00, 0.00' PROPOSED DRAINAGE STRUCTURES, TYPE 5 WITH TWO TYPE 22 FRAME AND GRATE GR 602.79 FL 597.33
 (66) STA 2265+50.00, 0.00' PROPOSED DRAINAGE STRUCTURES, TYPE 5 WITH TWO TYPE 22 FRAME AND GRATE GR 602.05 FL 596.59
 (67) STA 2268+00.00, 0.00' PROPOSED DRAINAGE STRUCTURES, TYPE 5 WITH TWO TYPE 22 FRAME AND GRATE GR 601.63 FL 596.17
 (68) STA 2269+05.00, 0.00' PROPOSED DRAINAGE STRUCTURES, TYPE 5 WITH TWO TYPE 22 FRAME AND GRATE GR 601.59 FL 596.13

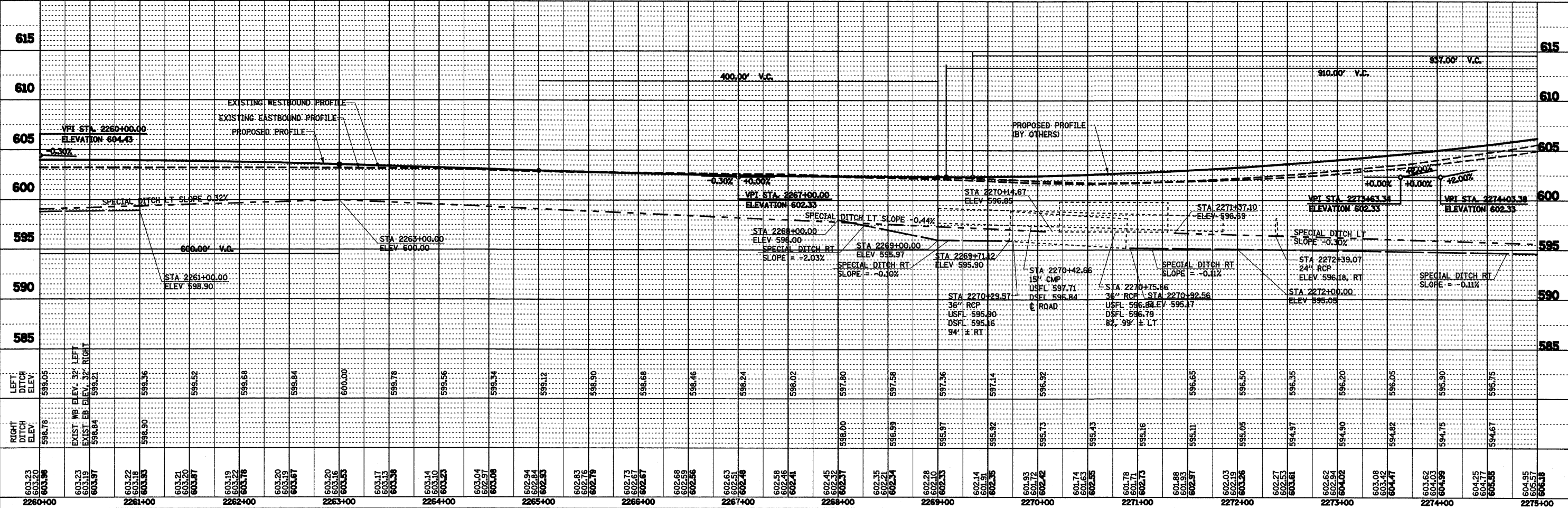
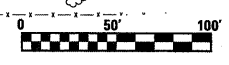
**SECTION (25-3,4)R
ENDS
STA 2268+00.00**

PROPOSED RECONSTRUCTION BY OTHERS



NOTE: FOR MEDIAN STORM SEWER PROFILE INFORMATION, SEE STORM SEWER PROFILE SHEETS.

NOTE: FOR CLARITY THE MEDIAN CONCRETE BARRIER HAS NOT BEEN PRESENTED ON THE DRAINAGE SHEETS.



PROFILE	SURVEYED	DATE
	PLOTTED	
	GRADES CHECKED	
	STRUCTURE NOTATIONS CHECKED	
	BY	
	DATE	
	NOTE BOOK NO.	
	CADD FILE NAME	

FILE NAME =	USER NAME = betaj	DESIGNED -	REVISED -	STATE OF ILLINOIS DEPARTMENT OF TRANSPORTATION	DRAINAGE PLAN AND PROFILE, FAI ROUTE 57/70	F.A.I. RTE.	SECTION	COUNTY	TOTAL SHEETS	SHEET NO.	
ST:\projects\403-0072-57-70\plan\keller\drain\pp_5770.dwg		DRAWN -	REVISED -			57/70	(25-3,4)R	EFFINGHAM	1098	169	
PLOT SCALE = 1/8" = 100.0000' / IN.		CHECKED -	REVISED -			CONTRACT NO. 74299					
PLOT DATE = 3/21/2011		DATE -	REVISED -			FED. ROAD DIST. NO. ILLINOIS FED. AID PROJECT					
						SCALE: 1"=50' SHEET NO. 11 OF 12 SHEETS STA. 2260+00.00 TO STA. 2268+00.00					
						FED. ROAD DIST. NO. ILLINOIS FED. AID PROJECT					