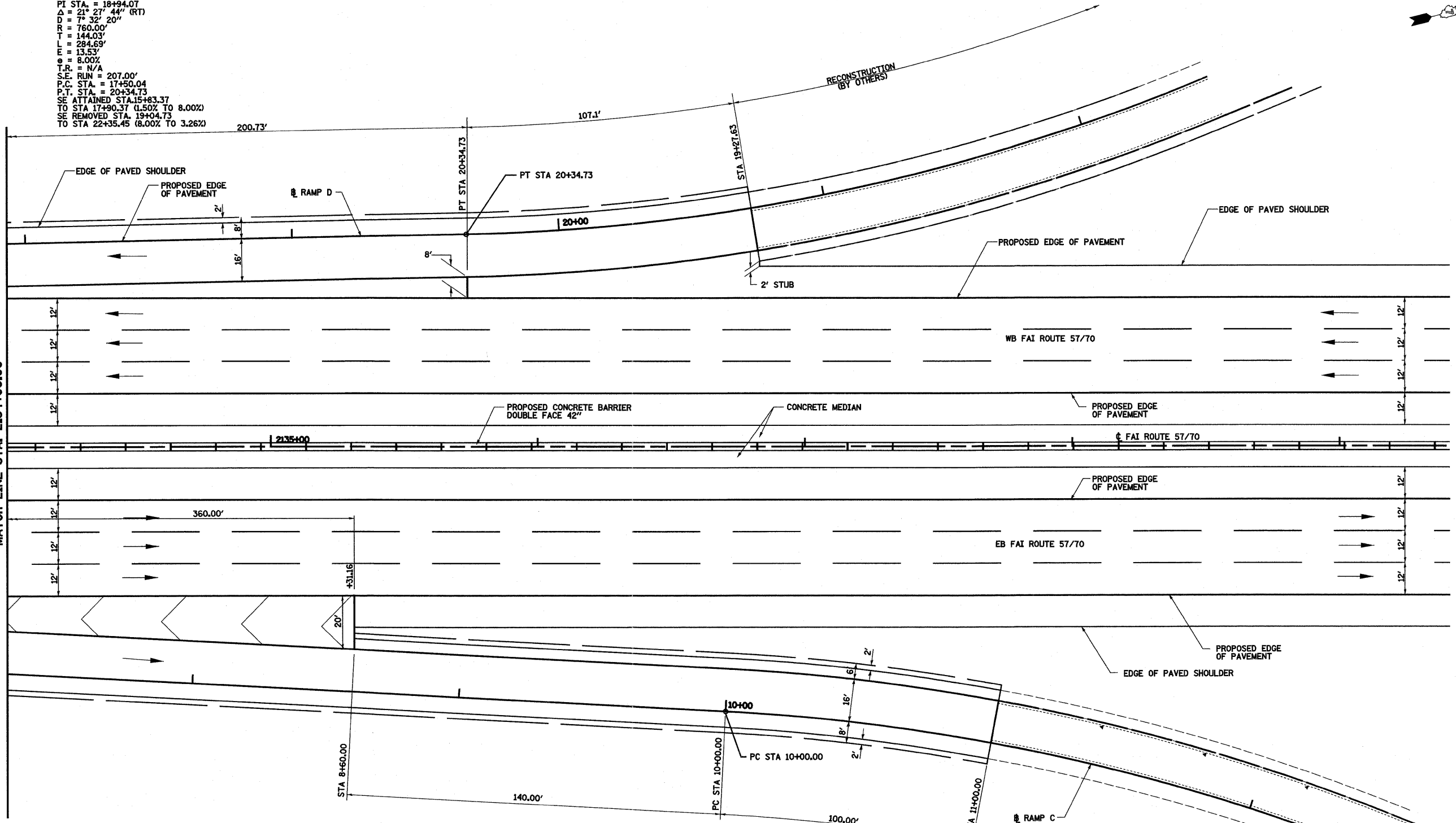
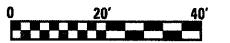


**PROP. FAYETTE RAMP D**  
**CURVE CSO**  
 PI STA. = 18+94.07  
 $\Delta = 21^\circ 27' 44''$  (RT)  
 $D = 7^\circ 32' 20''$   
 $R = 760.00'$   
 $T = 144.03'$   
 $L = 284.69'$   
 $E = 13.53'$   
 $e = 8.00\%$   
 $T.R. = N/A$   
 $S.E. RUN = 207.00'$   
 $P.C. STA. = 17+50.04$   
 $P.T. STA. = 20+34.73$   
 $SE ATTAINED STA. 15+83.37$   
 TO STA 17+90.37 (1.50% TO 8.00%)  
 SE REMOVED STA. 19+04.73  
 TO STA 22+35.45 (8.00% TO 3.26%)

MATCH LINE STA. 2134+00.00



**PROP. FAYETTE RAMP C**  
**CURVE CSO**  
 PI STA. = 11+88.04  
 $\Delta = 27^\circ 47' 40''$  (RT)  
 $D = 7^\circ 32' 20''$   
 $R = 760.00'$   
 $T = 188.04'$   
 $L = 368.68'$   
 $E = 22.32'$   
 $e = 8.00\%$   
 $T.R. = 48.00'$   
 $S.E. RUN = 255.00'$   
 $P.C. STA. = 10+00.00$   
 $P.T. STA. = 13+68.68$   
 $SE ATTAINED STA. 8+60.00$   
 TO STA 10+70.00 (1.50% TO 8.00%)  
 SE REMOVED STA. 12+83.68  
 TO STA 15+42.70 (8.00% TO 0.0%)



FILE NAME =  
 USER NAME = John  
 PLOT SCALE = 48,0000 ' / IN.  
 PLOT DATE = 3/28/2011

DESIGNED - ESW	REVISED -
DRAWN - PDB	REVISED -
CHECKED - BRM	REVISED -
DATE - 4-25-08	REVISED -

STATE OF ILLINOIS  
 DEPARTMENT OF TRANSPORTATION

INTERCHANGE RAMP TERMINAL DETAIL, RAMPS C & D, FAYETTE AVE.  
 SCALE: 1"=20'

SHEET NO. 3 OF 5 SHEETS  
 STA. 2134+00.00 TO STA. 2138+50.00

F.A.I. RTE.	SECTION	COUNTY	TOTAL SHEETS	SHEET NO.
57/70	(25-3,4R)	EFFINGHAM	1098	194
CONTRACT NO. 74299				
FED. ROAD DIST. NO. ILLINOIS FED. AID PROJECT				