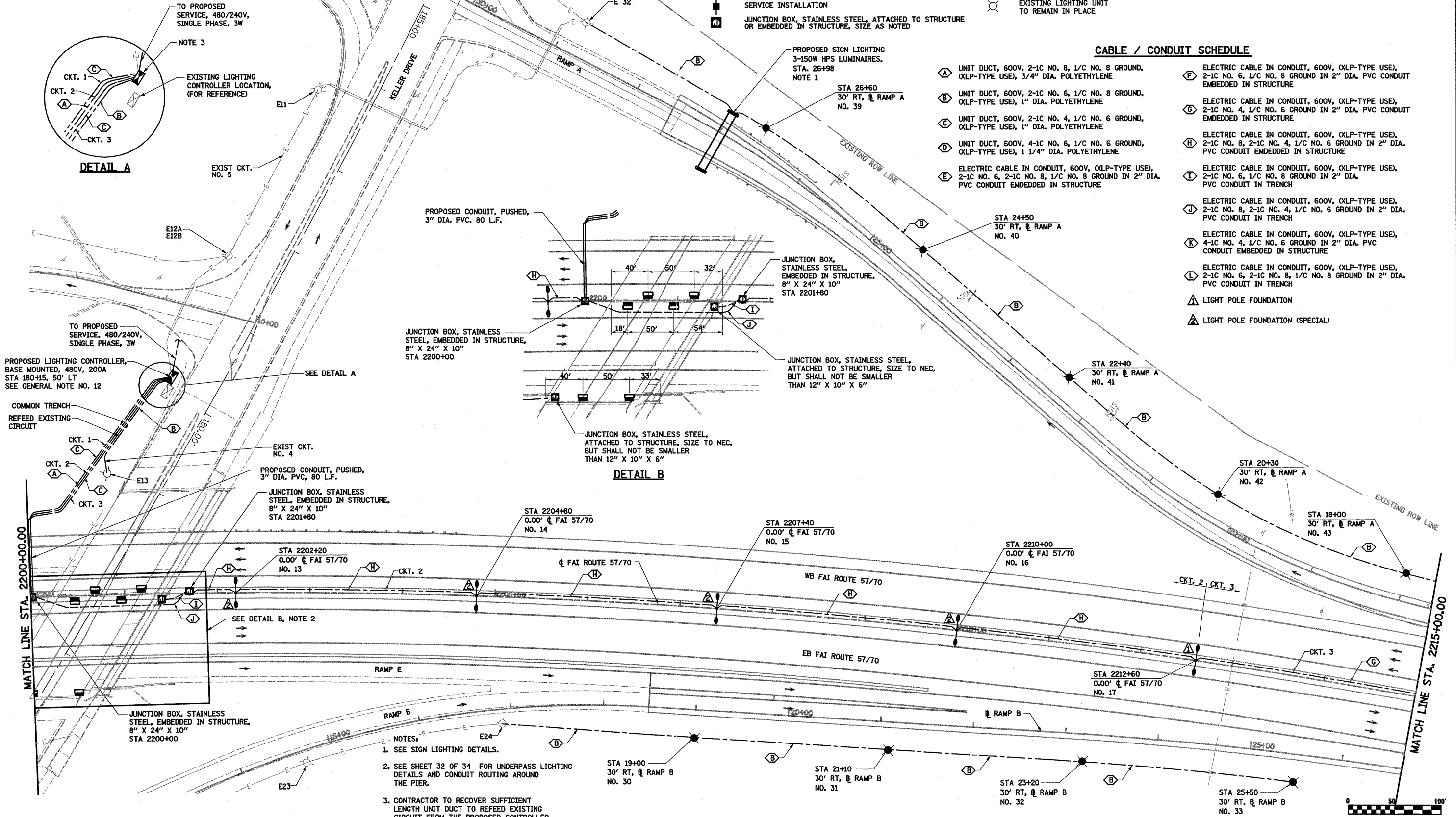
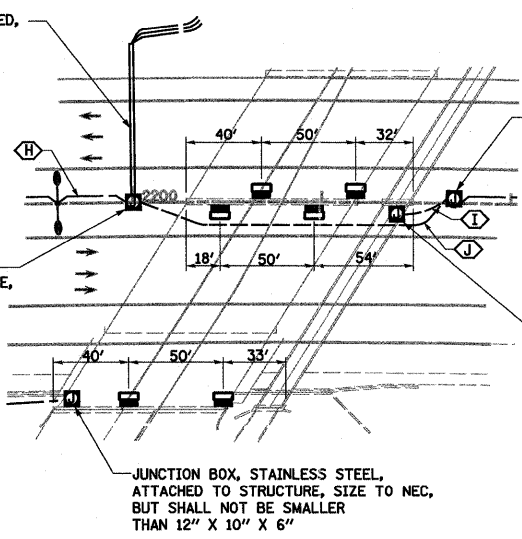
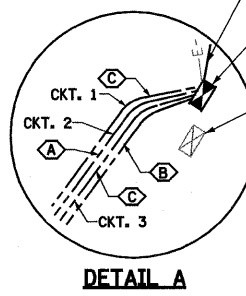


LEGEND

- PROPOSED LIGHTING UNIT, 45 FT ALUMINUM POLE, TWIN 8 FT DAVIT ARM, (2) 400W HPS LUMINAIRES, M-C-III
- PROPOSED LIGHTING UNIT (BY OTHERS)
- PROPOSED LIGHTING UNIT, 50 FT ALUMINUM POLE, 15 FT DAVIT ARM, 400W HPS LUMINAIRE, M-C-III
- PROPOSED LIGHTING CONTROLLER
- SERVICE INSTALLATION
- JUNCTION BOX, STAINLESS STEEL, ATTACHED TO STRUCTURE OR EMBEDDED IN STRUCTURE, SIZE AS NOTED
- PROPOSED UNIT DUCT
- PROPOSED CONDUIT EMBEDDED IN STRUCTURE
- PROPOSED CONDUIT, PUSHED, PVC, SIZE AS NOTED
- PROPOSED UNDERPASS LUMINAIRE, 150W HPS, PIER MOUNTED
- PROPOSED LIGHTING UNIT, 45FT. WEATHERING STEEL POLE, TENON MOUNT, 250W HPS MULTI-MOUNT LUMINAIRE
- EXISTING LIGHTING UNIT TO REMAIN IN PLACE

CABLE / CONDUIT SCHEDULE

- (A) UNIT DUCT, 600V, 2-1C NO. 8, 1/C NO. 8 GROUND, (XLP-TYPE USE), 3/4" DIA. POLYETHYLENE
- (B) UNIT DUCT, 600V, 2-1C NO. 6, 1/C NO. 8 GROUND, (XLP-TYPE USE), 1" DIA. POLYETHYLENE
- (C) UNIT DUCT, 600V, 2-1C NO. 4, 1/C NO. 6 GROUND, (XLP-TYPE USE), 1" DIA. POLYETHYLENE
- (D) UNIT DUCT, 600V, 4-1C NO. 6, 1/C NO. 6 GROUND, (XLP-TYPE USE), 1 1/4" DIA. POLYETHYLENE
- (E) ELECTRIC CABLE IN CONDUIT, 600V, (XLP-TYPE USE), 2-1C NO. 6, 2-1C NO. 8, 1/C NO. 8 GROUND IN 2" DIA. PVC CONDUIT EMBEDDED IN STRUCTURE
- (F) ELECTRIC CABLE IN CONDUIT, 600V, (XLP-TYPE USE), 2-1C NO. 6, 1/C NO. 8 GROUND IN 2" DIA. PVC CONDUIT EMBEDDED IN STRUCTURE
- (G) ELECTRIC CABLE IN CONDUIT, 600V, (XLP-TYPE USE), 2-1C NO. 4, 1/C NO. 6 GROUND IN 2" DIA. PVC CONDUIT EMBEDDED IN STRUCTURE
- (H) ELECTRIC CABLE IN CONDUIT, 600V, (XLP-TYPE USE), 2-1C NO. 8, 2-1C NO. 4, 1/C NO. 6 GROUND IN 2" DIA. PVC CONDUIT EMBEDDED IN STRUCTURE
- (I) ELECTRIC CABLE IN CONDUIT, 600V, (XLP-TYPE USE), 2-1C NO. 6, 1/C NO. 8 GROUND IN 2" DIA. PVC CONDUIT IN TRENCH
- (J) ELECTRIC CABLE IN CONDUIT, 600V, (XLP-TYPE USE), 2-1C NO. 8, 2-1C NO. 4, 1/C NO. 6 GROUND IN 2" DIA. PVC CONDUIT IN TRENCH
- (K) ELECTRIC CABLE IN CONDUIT, 600V, (XLP-TYPE USE), 4-1C NO. 4, 1/C NO. 6 GROUND IN 2" DIA. PVC CONDUIT EMBEDDED IN STRUCTURE
- (L) ELECTRIC CABLE IN CONDUIT, 600V, (XLP-TYPE USE), 2-1C NO. 6, 2-1C NO. 8, 1/C NO. 8 GROUND IN 2" DIA. PVC CONDUIT IN TRENCH
- (A) LIGHT POLE FOUNDATION
- (A) LIGHT POLE FOUNDATION (SPECIAL)



- NOTES:**
- SEE SIGN LIGHTING DETAILS.
 - SEE SHEET 32 OF 34 FOR UNDERPASS LIGHTING DETAILS AND CONDUIT ROUTING AROUND THE PIER.
 - CONTRACTOR TO RECOVER SUFFICIENT LENGTH UNIT DUCT TO REFEED EXISTING CIRCUIT FROM THE PROPOSED CONTROLLER.

FILE NAME =	USER NAME = paul	DESIGNED - VG	REVISED -
2:\Projects\08-0000\75-70\Appl\Keller Lighting\prop.dwg		DRAWN - PDB	REVISED -
	PLOT SCALE = 1/80.0000" = 1" IN.	CHECKED - BRM	REVISED -
	PLOT DATE = 3/18/2011	DATE - 5-02-08	REVISED -

**STATE OF ILLINOIS
DEPARTMENT OF TRANSPORTATION**

**PROPOSED LIGHTING
FAI ROUTE 57/70**

SCALE: 1"=50' SHEET NO. 19 OF 34 SHEETS STA. 2200.00' TO STA. 2215+00.00'

F.A.I. RTE.	SECTION	COUNTY	TOTAL SHEETS	SHEET NO.
57/70	(25-3,4)R	EFFINGHAM	1098	317
FED. ROAD DIST. NO. ILLINOIS FED. AID PROJECT			CONTRACT NO. 74299	