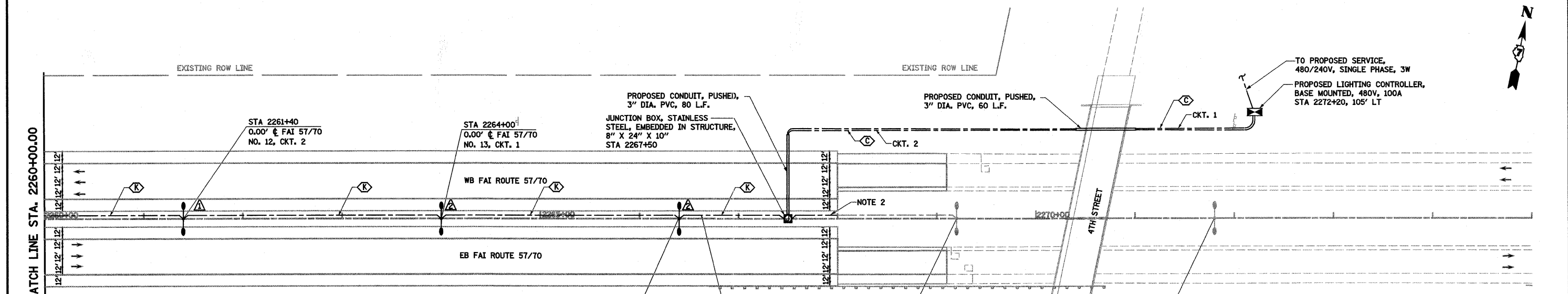
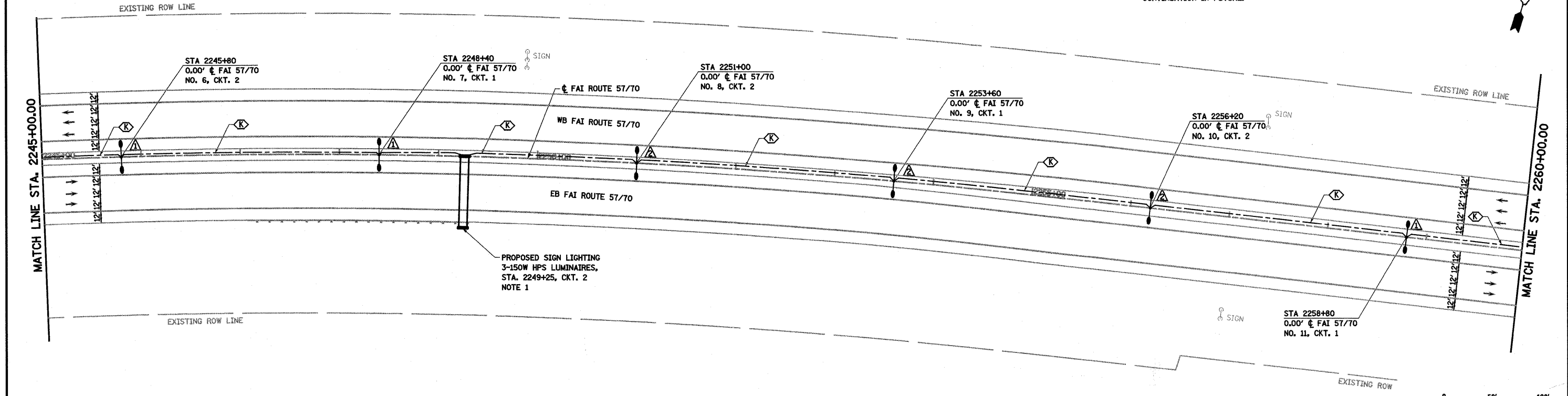


- NOTES:
 1. SEE SIGN LIGHTING DETAILS.
 2. RUN CONDUIT TO END OF BARRIER WALL AND INSTALL DEFLECTION SLEEVE FOR CONTINUATION IN FUTURE.



- LEGEND**
- PROPOSED LIGHTING UNIT, 45 FT ALUMINUM POLE, TWIN 8 FT DAVIT ARM, (2) 400W HPS LUMINAIRES, M-C-III
 - PROPOSED LIGHTING UNIT (BY OTHERS)
 - PROPOSED LIGHTING UNIT, 50 FT ALUMINUM POLE, 15 FT DAVIT ARM, 400W HPS LUMINAIRE, M-C-III
 - PROPOSED LIGHTING CONTROLLER
 - SERVICE INSTALLATION
 - JUNCTION BOX, STAINLESS STEEL, ATTACHED TO STRUCTURE OR EMBEDDED IN STRUCTURE, SIZE AS NOTED
 - PROPOSED UNIT DUCT
 - PROPOSED CONDUIT EMBEDDED IN STRUCTURE
 - PROPOSED CONDUIT, PUSHED, PVC, SIZE AS NOTED
 - PROPOSED UNDERPASS LUMINAIRE, 150W HPS, PIER MOUNTED
 - PROPOSED LIGHTING UNIT, 45FT. WEATHERING STEEL POLE, TENON MOUNT, 250W HPS MULTI-MOUNT LUMINAIRE
 - EXISTING LIGHTING UNIT TO REMAIN IN PLACE
 - △ LIGHT POLE FOUNDATION
 - △ LIGHT POLE FOUNDATION (SPECIAL)

CABLE / CONDUIT SCHEDULE

<p>UNIT DUCT, 600V, 2-1C NO. 8, 1/C NO. 8 GROUND, (XLP-TYPE USE), 3/4" DIA. POLYETHYLENE</p> <p>UNIT DUCT, 600V, 2-1C NO. 6, 1/C NO. 8 GROUND, (XLP-TYPE USE), 1" DIA. POLYETHYLENE</p> <p>UNIT DUCT, 600V, 2-1C NO. 4, 1/C NO. 6 GROUND, (XLP-TYPE USE), 1" DIA. POLYETHYLENE</p> <p>UNIT DUCT, 600V, 4-1C NO. 6, 1/C NO. 6 GROUND, (XLP-TYPE USE), 1 1/4" DIA. POLYETHYLENE</p> <p>ELECTRIC CABLE IN CONDUIT, 600V, (XLP-TYPE USE), 2-1C NO. 6, 2-1C NO. 8, 1/C NO. 8 GROUND IN 2" DIA. PVC CONDUIT EMBEDDED IN STRUCTURE</p>	<p>ELECTRIC CABLE IN CONDUIT, 600V, (XLP-TYPE USE), 2-1C NO. 6, 1/C NO. 8 GROUND IN 2" DIA. PVC CONDUIT EMBEDDED IN STRUCTURE</p> <p>ELECTRIC CABLE IN CONDUIT, 600V, (XLP-TYPE USE), 2-1C NO. 4, 1/C NO. 6 GROUND IN 2" DIA. PVC CONDUIT EMBEDDED IN STRUCTURE</p> <p>ELECTRIC CABLE IN CONDUIT, 600V, (XLP-TYPE USE), 2-1C NO. 8, 2-1C NO. 4, 1/C NO. 6 GROUND IN 2" DIA. PVC CONDUIT EMBEDDED IN STRUCTURE</p> <p>ELECTRIC CABLE IN CONDUIT, 600V, (XLP-TYPE USE), 2-1C NO. 6, 1/C NO. 8 GROUND IN 2" DIA. PVC CONDUIT IN TRENCH</p>	<p>ELECTRIC CABLE IN CONDUIT, 600V, (XLP-TYPE USE), 2-1C NO. 8, 2-1C NO. 4, 1/C NO. 6 GROUND IN 2" DIA. PVC CONDUIT IN TRENCH</p> <p>ELECTRIC CABLE IN CONDUIT, 600V, (XLP-TYPE USE), 4-1C NO. 4, 1/C NO. 6 GROUND IN 2" DIA. PVC CONDUIT EMBEDDED IN STRUCTURE</p> <p>ELECTRIC CABLE IN CONDUIT, 600V, (XLP-TYPE USE), 2-1C NO. 6, 2-1C NO. 8, 1/C NO. 8 GROUND IN 2" DIA. PVC CONDUIT IN TRENCH</p>
---	---	---