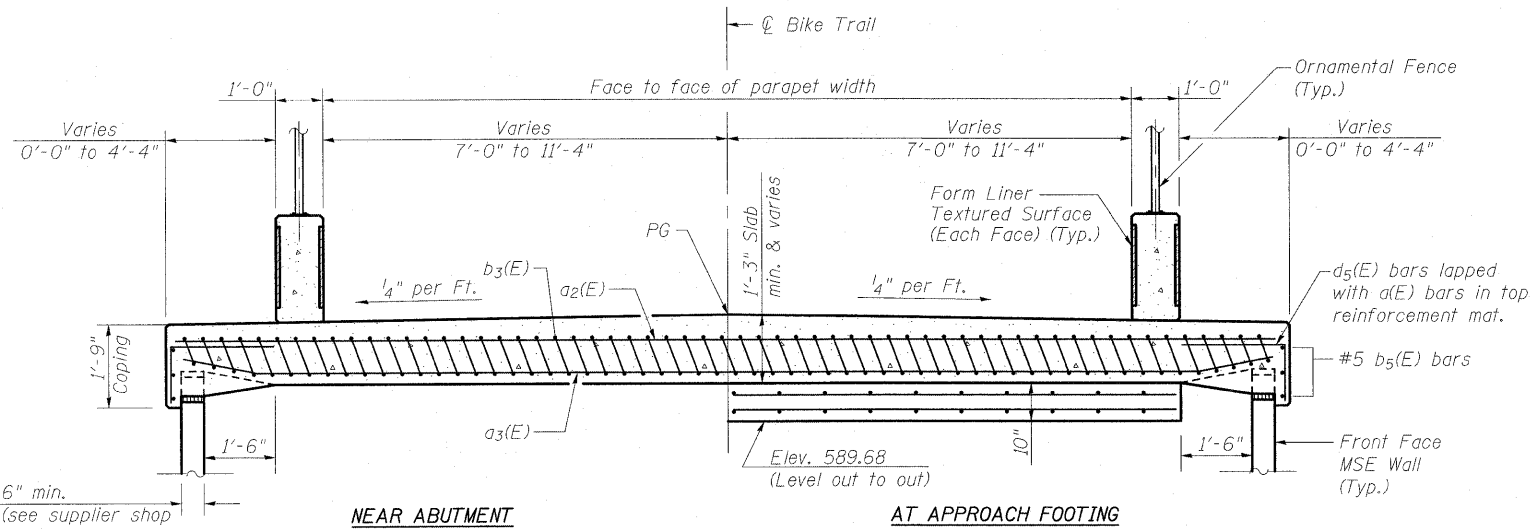


SECTION B-B

* Tilt #9 b₄(E) bars as required to maintain clearance.
 ** Cost included with Concrete Superstructure.

** 10 mil. Polyethylene bond breaker on steel trowel finish

Notes:
 Approach slab and parapet concrete shall be paid for as Concrete Superstructure.
 Approach footing concrete shall be paid for as Concrete Structures.
 Reinforcement shall be paid for as Reinforcement Bars, Epoxy Coated.
 For v₃(E) bar details, see sheet 22 of 46.
 The approach footing maximum applied service bearing pressure (Omax) = 2.0 ksf.
 For bar splicer details, see sheet 41 of 46.
 For d₂(E) bar details, see sheet 8 of 46.



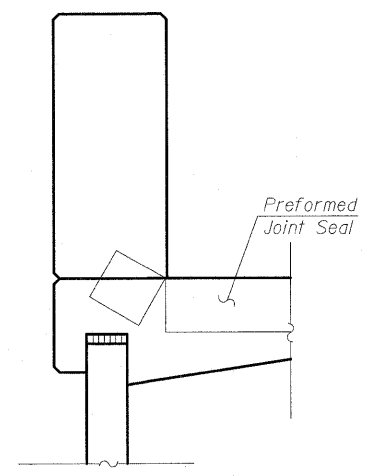
SECTION C-C

(See Plan for dimensions not shown)
 (See Sheet 15 of 46 for Parapet Reinforcement)

6" min.
 (see supplier shop drawings for thickness)

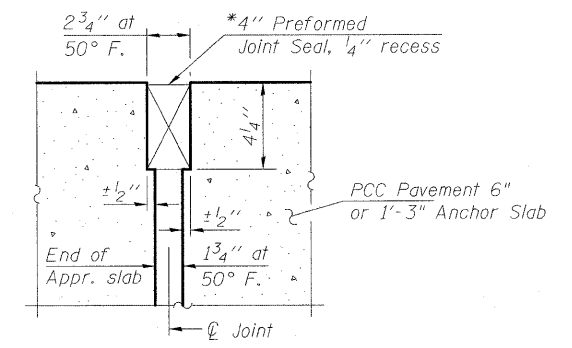
NEAR ABUTMENT

AT APPROACH FOOTING



VIEW D-D

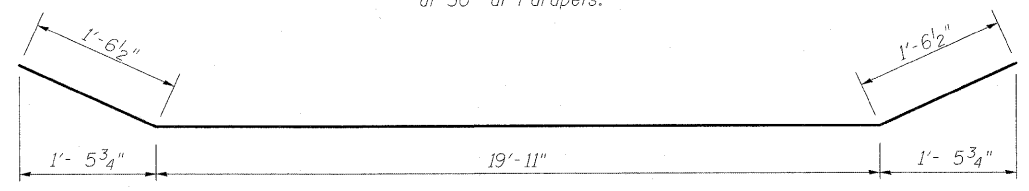
Angle Preformed Joint Seal at 30° at Parapets.



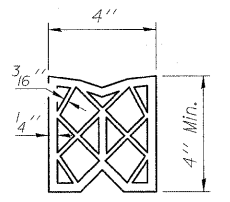
RIGID PAVEMENT

DETAIL A

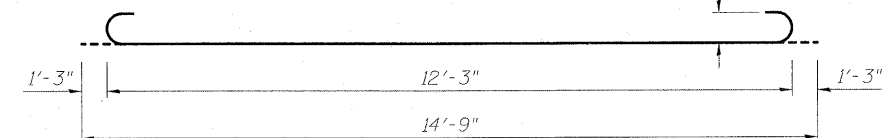
*Cost included with Concrete Superstructure.



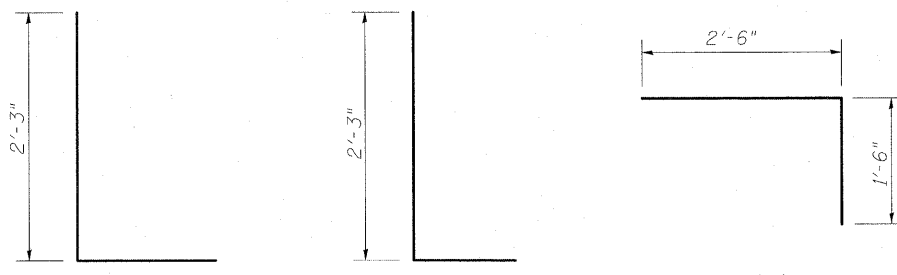
BAR a₃(E)



PREFORMED JOINT SEAL

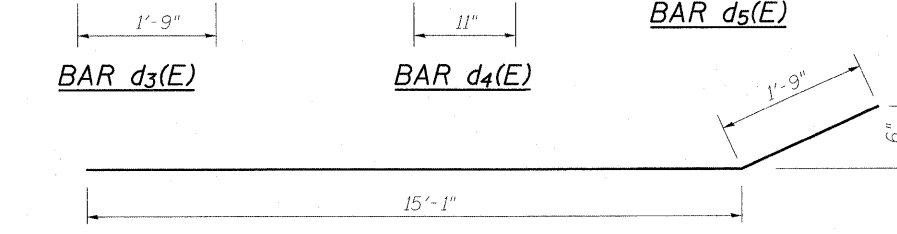


BAR b₄(E)

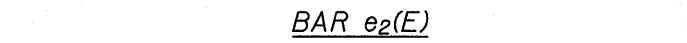


BAR d₃(E)

BAR d₄(E)



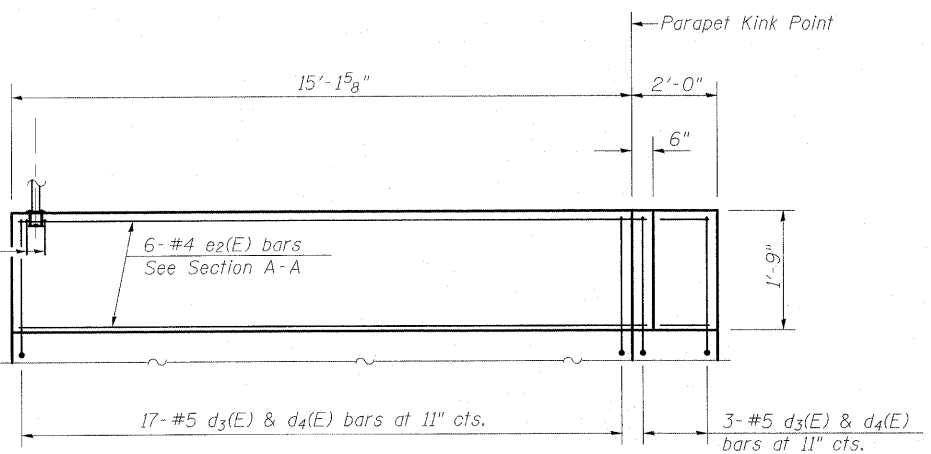
BAR d₅(E)



BAR e₂(E)

WEST APPROACH BILL OF MATERIAL

Bar	No.	Size	Length	Shape
a ₂ (E)	13	#5	24'-5"	—
a ₃ (E)	23	#5	23'-0"	—
a ₄ (E)	2	#5	22'-5"	—
b ₃ (E)	19	#4	14'-9"	—
b ₄ (E)	58	#9	14'-9"	—
b ₅ (E)	6	#5	14'-3"	—
d ₂ (E)	20	#5	1'-11"	┘
d ₃ (E)	40	#5	4'-0"	┘
d ₄ (E)	40	#5	3'-2"	┘
d ₅ (E)	26	#5	4'-0"	┘
e ₂ (E)	12	#4	16'-10"	—
t(E)	42	#4	9'-9"	—
w(E)	40	#5	19'-9"	—
Concrete Superstructure		Cu. Yd.	21.5	
Concrete Structures		Cu. Yd.	6.2	
Reinforcement Bars, Epoxy Coated		Pound	5800	
Form Liner Textured Surface		Sq. Ft.	81.0	



WEST BRIDGE APPROACH PARAPET ELEVATION

(dims. taken along front face of parapet)

FILE NAME = ...0714299-0256010-sh016.dgn
 BERNARDIN LOCKMUELLER & ASSOCIATES, INC.
 3000 S. W. 11th Ave.
 MIAMI, FL 33135
 PHONE: (305) 288-4666
 FAX: (305) 288-4668

USER NAME =
 Illinois Design Firm Number 184.001670
 PLOT SCALE =
 PLOT DATE = 7:43:00 AM 5/6/2011

DESIGNED - BB
 CHECKED - ACS
 DRAWN - WJS
 CHECKED - CJF

REVISED -
 REVISED -
 REVISED -
 REVISED -

**STATE OF ILLINOIS
 DEPARTMENT OF TRANSPORTATION**

**WEST BRIDGE APPROACH SLAB DETAILS
 STRUCTURE NUMBER 025-6010**

SHEET NO. 16 OF 46 SHEETS

F.A.I. RTE.	SECTION	COUNTY	TOTAL SHEETS	SHEET NO.
57/70	(25-3)PB	EFFINGHAM	1098	385
	SN 025-6010			CONTRACT NO. 74299

FED. ROAD DIST. NO. 7 ILLINOIS FED. AID PROJECT