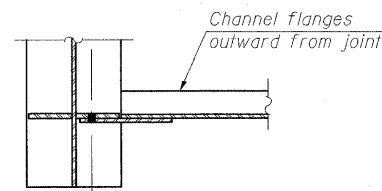
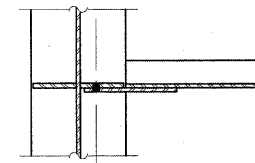


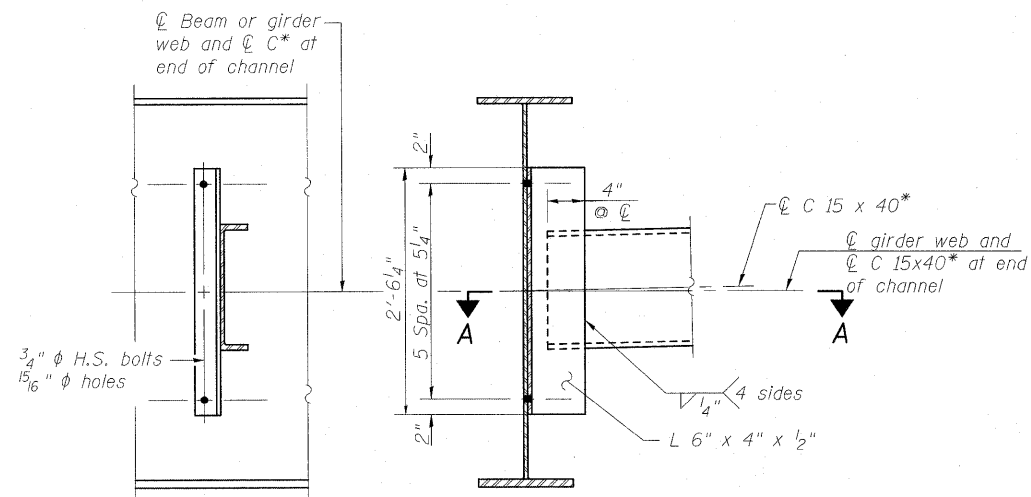
SECTION A-A



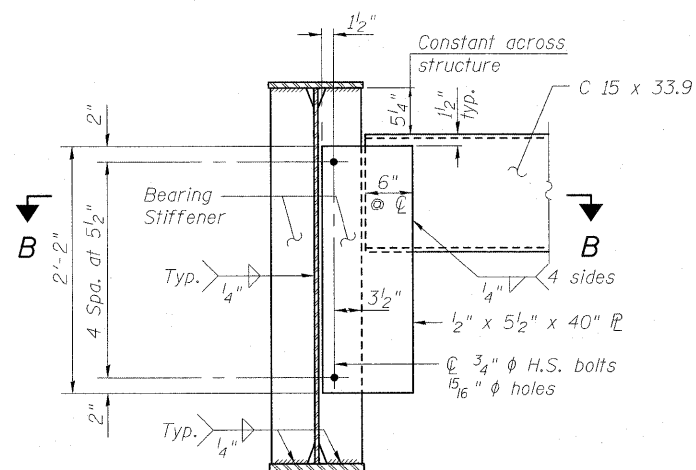
SECTION B-B



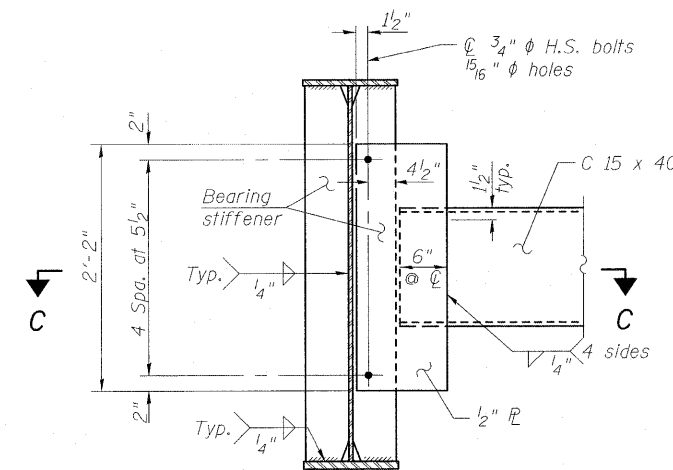
SECTION C-C



DIAPHRAGM D



DIAPHRAGM D1



DIAPHRAGM D2

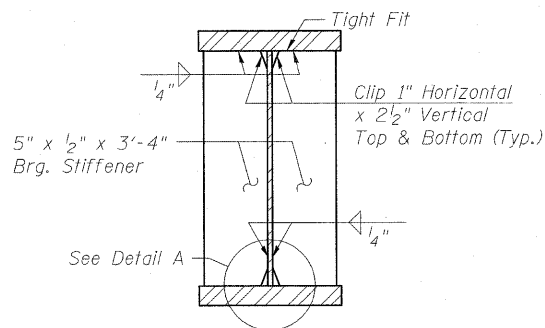
*Alternate channel C 15 x 50 is permitted to facilitate material acquisition. Calculated weight of structural steel is based on the lighter section.

The alternate, if utilized, shall be provided at no extra cost to the Department.

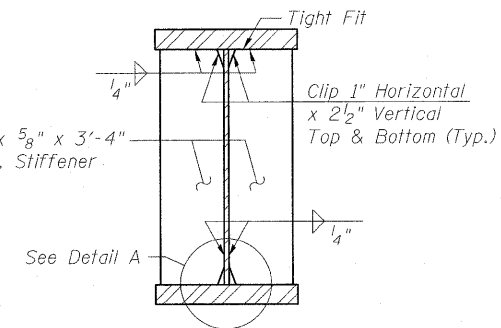
Stop fillet weld from connection plate to flange 1/4" from end of connection plate.

Note: Two hardened washers required for each set of oversized holes.

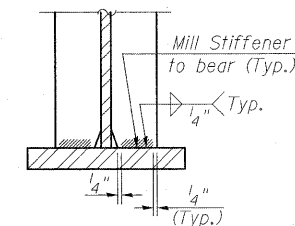
Note: Two hardened washers required for each set of oversized holes.



SECTION AT ABUT.



SECTION AT PIER



DETAIL A

Notes:
See sheet 19 of 46 for diaphragm layout and spacing.
All diaphragms shall be installed as steel is erected and secured with erection pins and bolts except as otherwise noted. Individual diaphragms of supports may be temporarily disconnected to install bearing anchor rods.