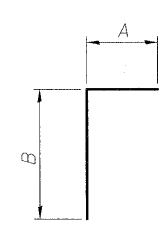


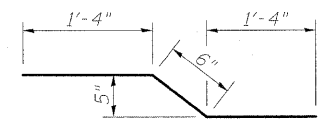
BAR s(E)

BAR u(E)



BAR

Bar	A	B
h3(E)	3'-8"	5'-2"
h4(E)	3'-8"	12'-9"
v3(E)	1'-3"	1'-11"
v6(E)	3'-8"	9'-8"

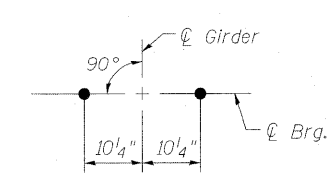


BAR v1(E)

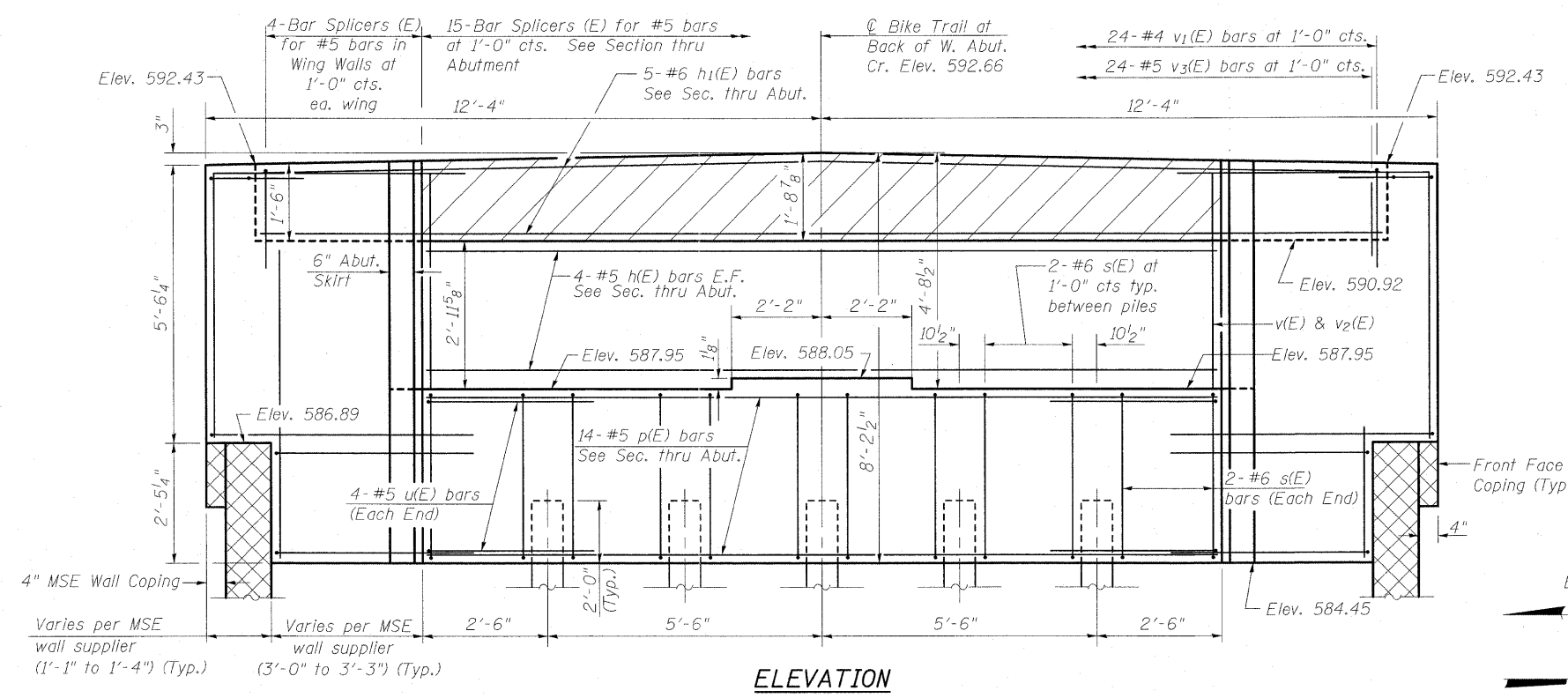
PILE DATA

Type: HP 14x73 with Pile Shoes
 Nominal Required Bearing: 578k
 Factored Resistance Available: 318k
 Est. Length: 31'-0"
 No. Production Piles: 8
 No. Test Piles: 2 (1 at each abutment)

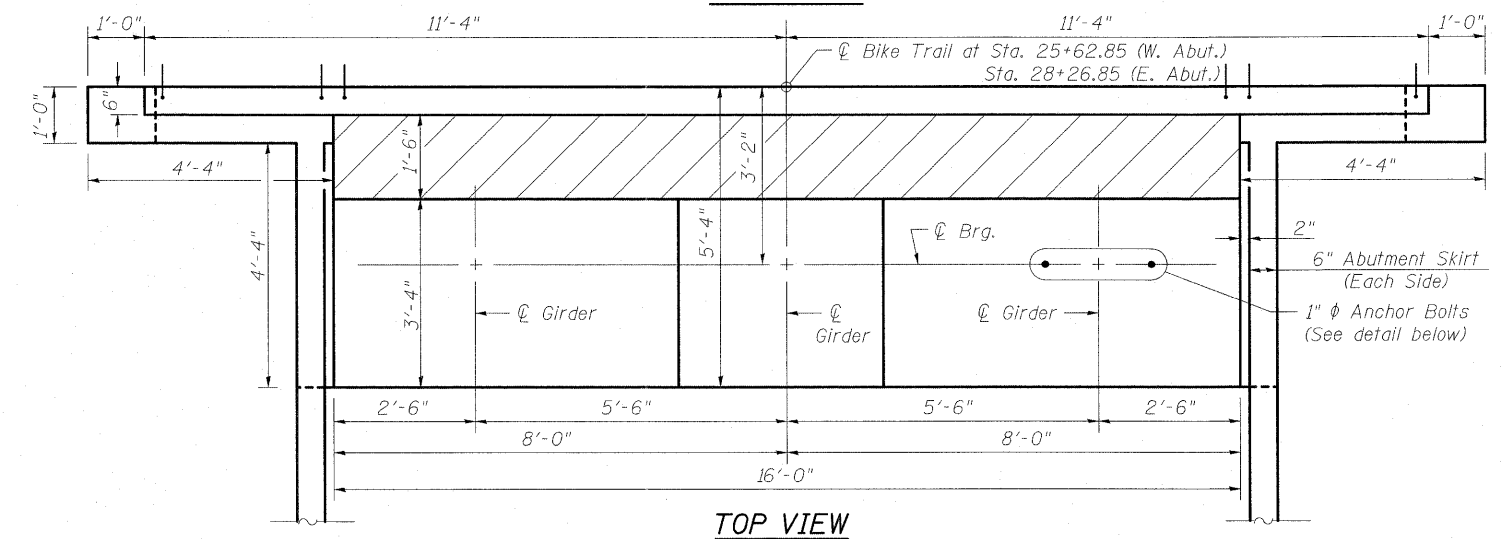
Piles shall be driven prior to the placement of the Reinforced Select Fill and coated with coal tar epoxy from the bottom of the Select Fill to 1' above the base of the Abutment. The cost of the coal tar shall be included with the cost of Furnishing Piles HP 14x73.



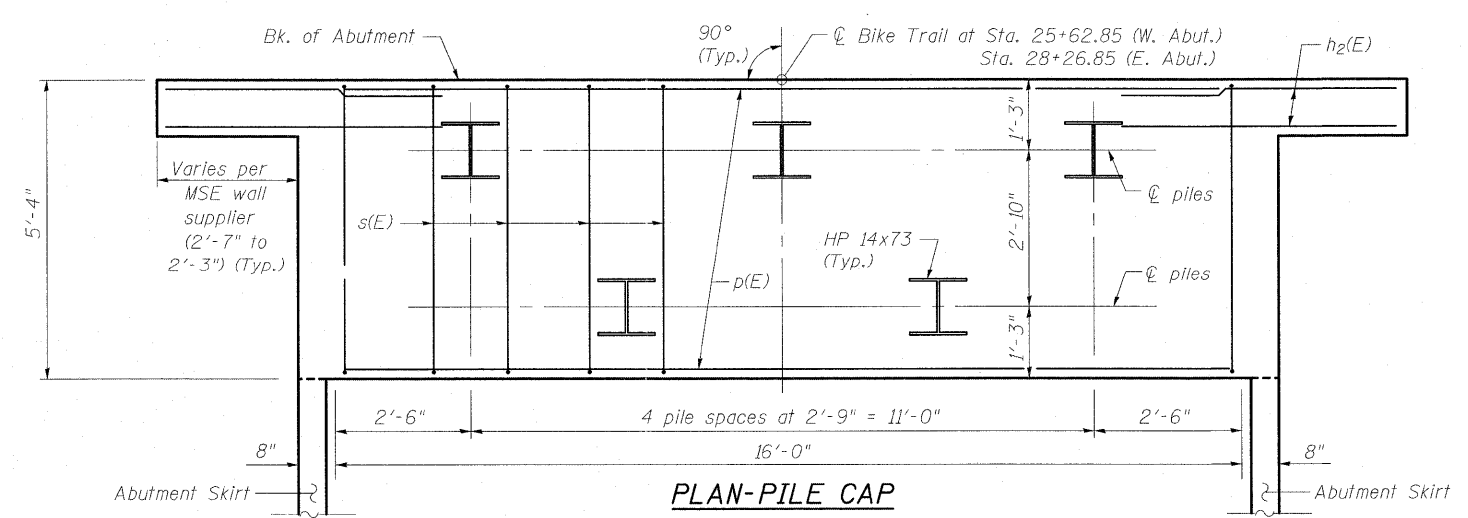
ANCHOR BOLT DETAIL



ELEVATION

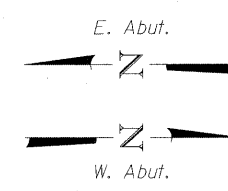


TOP VIEW



PLAN-PILE CAP

Notes:
 Pour steps monolithically with cap.
 See sheet 23 of 46 for Section thru Pile Supported Abutment.
 For details of piles see sheet 42 of 46.
 Space reinforcement in cap to miss anchor bolts.
 For Abutment Skirt Details see sheet 23 of 46.
 E.F. indicates Each Face.
 A single test pile shall be used at each abutment.
 For details of Bar Splicers, see sheet 41 of 46.



TWO ABUTMENT BILL OF MATERIAL

Bar	No.	Size	Length	Shape
h1(E)	16	#5	15'-9"	—
h2(E)	10	#6	15'-9"	—
h3(E)	64	#5	6'-8"	—
h4(E)	8	#7	8'-10"	┌
h5(E)	24	#7	16'-5"	┌
p(E)	28	#5	15'-9"	—
s(E)	24	#6	17'-8"	□
u(E)	16	#5	10'-0"	└
v1(E)	34	#7	5'-3"	—
v2(E)	48	#4	3'-2"	—
v3(E)	34	#7	6'-11"	—
v4(E)	48	#5	3'-2"	┌
v5(E)	24	#5	7'-9"	—
v6(E)	16	#5	5'-2"	—
v7(E)	36	#7	13'-4"	┌
v8(E)	8	#7	7'-0"	—

Concrete Structures	Cu. Yd.	39.2
Reinforcement Bars, Epoxy Coated	Pound	5640
Furnishing Steel Piles HP 14x73	Foot	248
Driving Piles	Foot	248
Test Pile Steel HP 14x73	Each	2
Pile Shoes	Each	10
Concrete Sealer	Sq. Ft.	485
Form Liner Textured Surface	Sq. Ft.	198
Slope Wall 4 Inch	Sq. Yd.	14