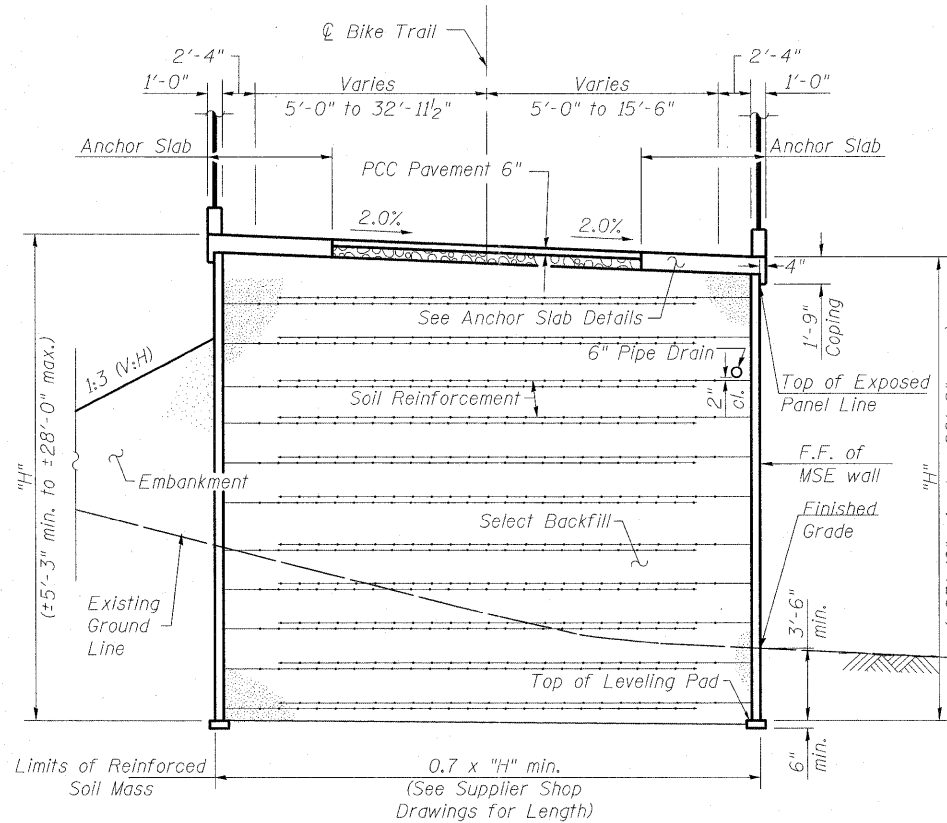


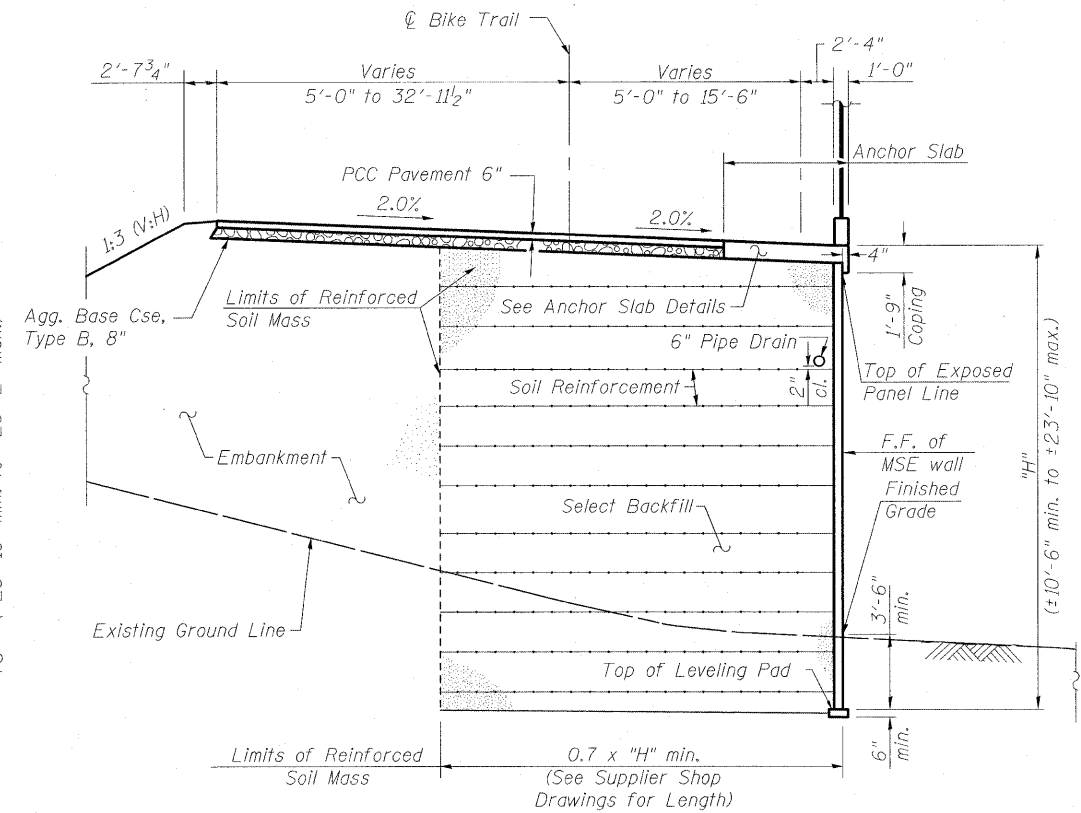
SECTION A-A
THRU MSE WALL & BIKE TRAIL

Sta. 28+18.52 to Sta. 28+30.03



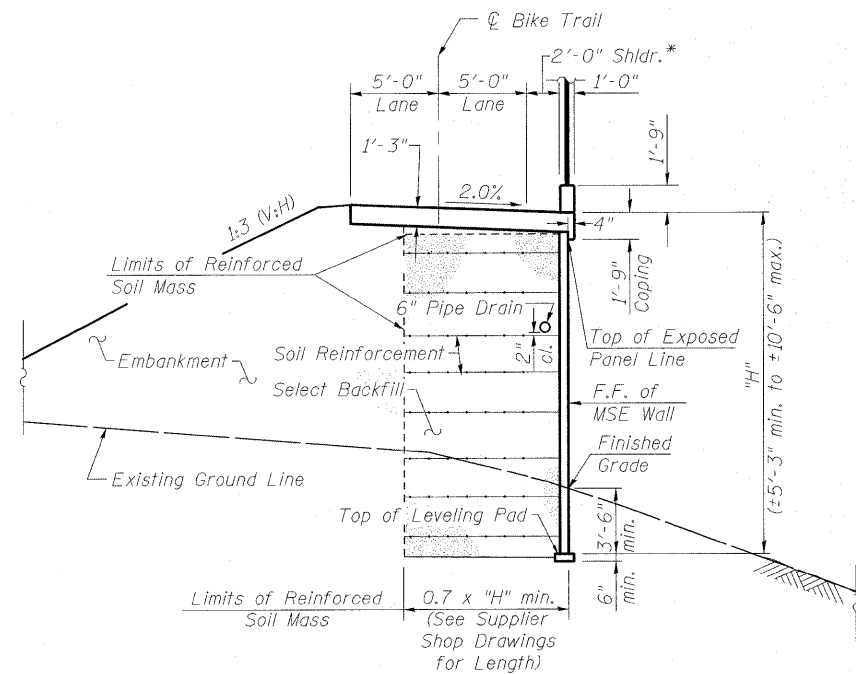
SECTION B-B
THRU MSE WALL & BIKE TRAIL

Sta. Sta. 28+30.03 to Sta. 28+68.34



SECTION C-C
THRU MSE WALL & BIKE TRAIL

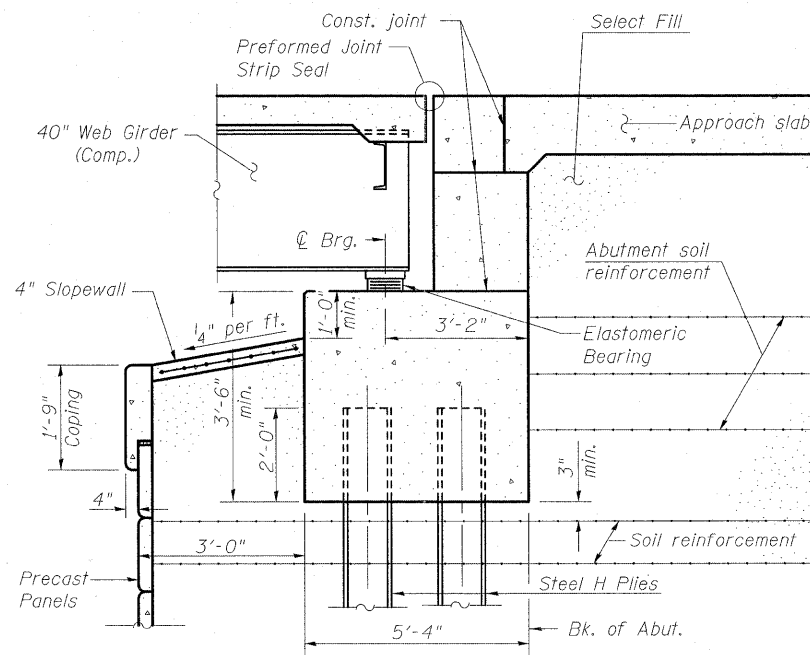
Sta. Sta. 28+68.34 to Sta. 29+02.33



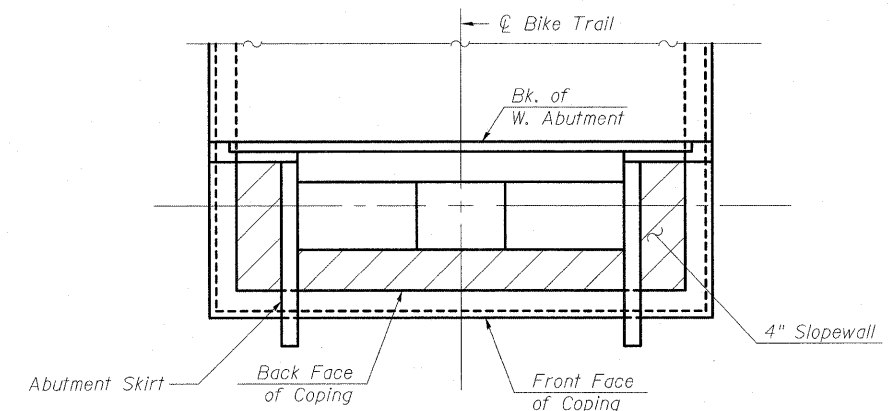
SECTION D-D
THRU MSE WALL & BIKE TRAIL

Sta. 29+02.33 to Sta. 30+82.49

*2'-0" Shldr. width varies from
Sta. 29+83.50 to Sta. 30+02.88
(2'-0" to 2'-8 1/4")



SECTION THRU PILE SUPPORTED
STUB ABUTMENT



EAST ABUTMENT
SLOPEWALL LAYOUT

Notes:
The MSE Wall supplier's internal stability design shall account for the anchor slab's bearing pressure surcharge of 1.0 Ksf and horizontal sliding force of 0.5 Kips/ft. of wall.
The MSE Wall supplier's internal stability design shall account for the abutment's horizontal sliding force of 2.0 Kips/ft. of abutment length and a soil surcharge force of 1.0 Kips/ft. of abutment length.
Slopewall shall be reinforced with welded wire fabric, 6" x 6" - W4.0 x W4.0, weighing 58 lbs. per 100 sq. ft.