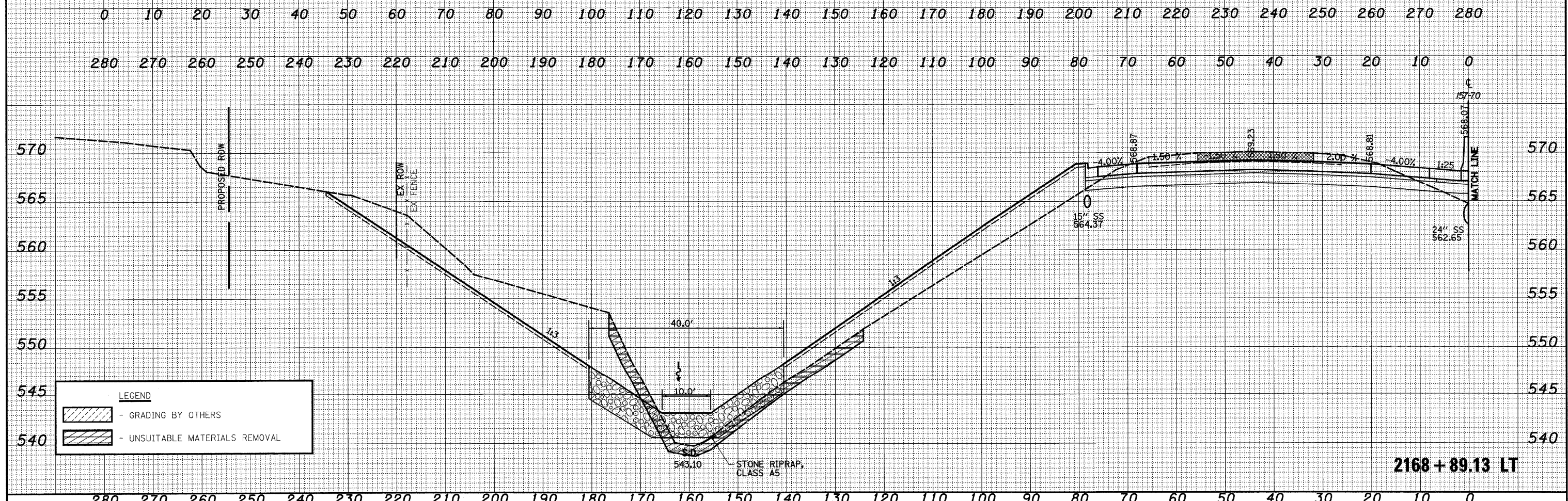
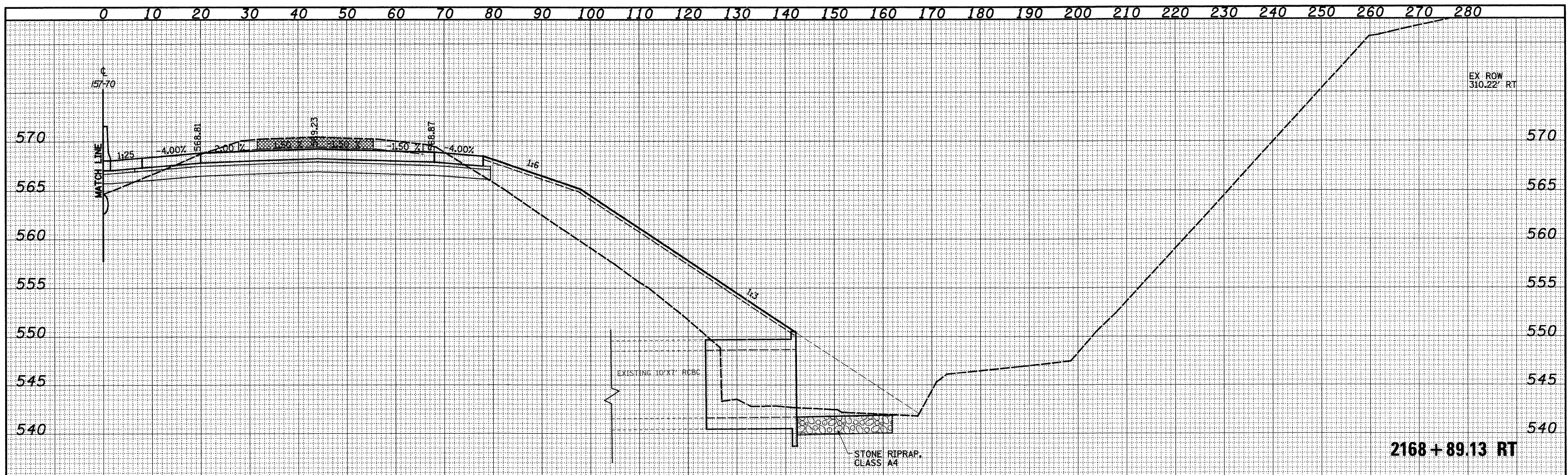


DATE	
BY	
FINAL SURVEY	
SURVEYED	
PLOTTED	
TEMPLATE	
NOTE BOOK	
AREAS CHECKED	
NO.	

DATE	
BY	
ORIGINAL SURVEY	
SURVEYED	
PLOTTED	
TEMPLATE	
NOTE BOOK	
AREAS CHECKED	
NO.	



FILE NAME =	USER NAME = John	DESIGNED - JWS	REVISED -	<b>STATE OF ILLINOIS DEPARTMENT OF TRANSPORTATION</b>	<b>CROSS SECTIONS FAI 57/70</b>			FAI RTE. 57/70	SECTION (25-3,4)R	COUNTY EFFINGHAM	TOTAL SHEETS 1098	SHEET NO. 505
PROJECT: MD 8872.5P-70.dgn\W.Keller\esh\John.Keller.dgn	PLOT SCALE = 20.00000' / IN.	DRAWN - LEC	REVISED -		SCALE: 1"=10'	SHEET NO. 79 OF 199 SHEETS	STA. 2168+89.13 TO STA. 2168+89.13	FED. ROAD DIST. NO.	ILLINOIS FED. AID PROJECT	CONTRACT NO. 74299		
	PLOT DATE = 3/20/2011	CHECKED - BRM	REVISED -									
		DATE - 4-01-08	REVISED -									