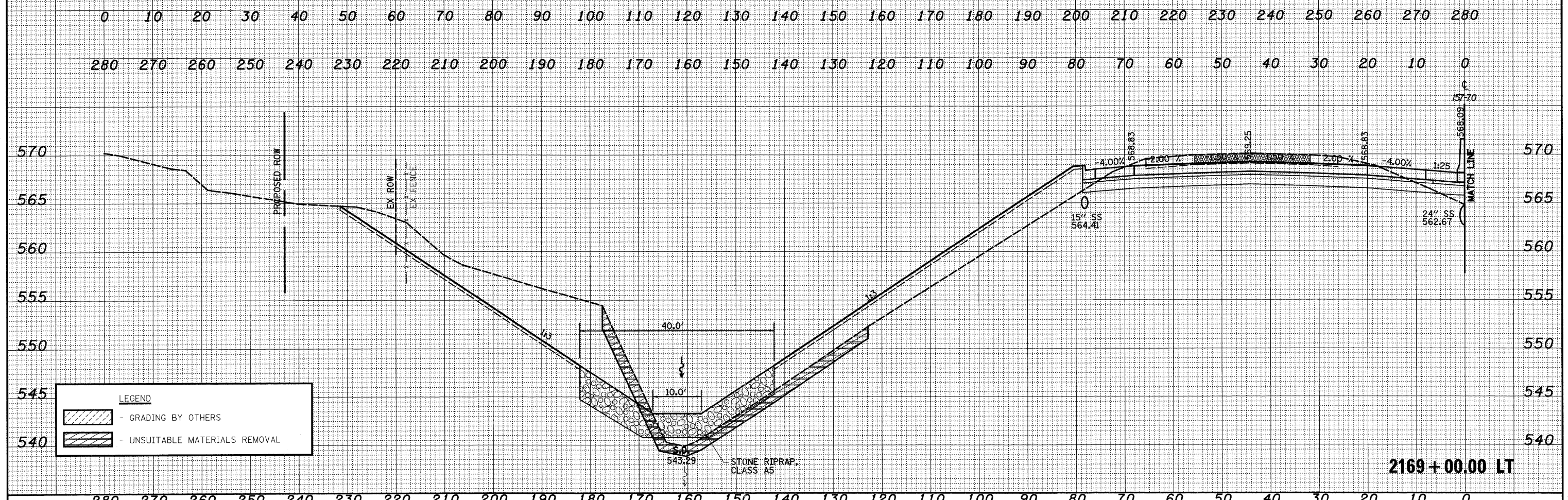


DATE	
BY	
FINAL SURVEY	SURVEYED
NOTE BOOK NO.	PLOTTED
	TEMPLATE
	AREAS CHECKED

DATE	
BY	
ORIGINAL SURVEY	SURVEYED
NOTE BOOK NO.	PLOTTED
	TEMPLATE
	AREAS CHECKED



2169+00.00 RT



2169+00.00 LT

LEGEND	
	- GRADING BY OTHERS
	- UNSUITABLE MATERIALS REMOVAL

FILE NAME =	USER NAME = John	DESIGNED - JWS	REVISED -	STATE OF ILLINOIS DEPARTMENT OF TRANSPORTATION	CROSS SECTIONS FAI 57/70	F.A.I. RTE. 57/70	SECTION (25-3,4R)	COUNTY EFFINGHAM	TOTAL SHEETS	SHEET NO.	
9:\Project\007\007\57-70\csp\ML_Keller\work\Plan_Keller.dwg	PLOT SCALE = 20.0000' / IN.	DRAWN - LEC	REVISED -						1098	506	
	PLOT DATE = 3/20/2011	CHECKED - BRM	REVISED -						CONTRACT NO. 74299		
		DATE - 4-01-08	REVISED -						FED. ROAD DIST. NO. ILLINOIS FED. AID PROJECT		
SCALE: 1"=10'						SHEET NO. 80 OF 199 SHEETS		STA. 2169+00.00 TO STA. 2169+00.00		FED. ROAD DIST. NO. ILLINOIS FED. AID PROJECT	