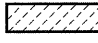
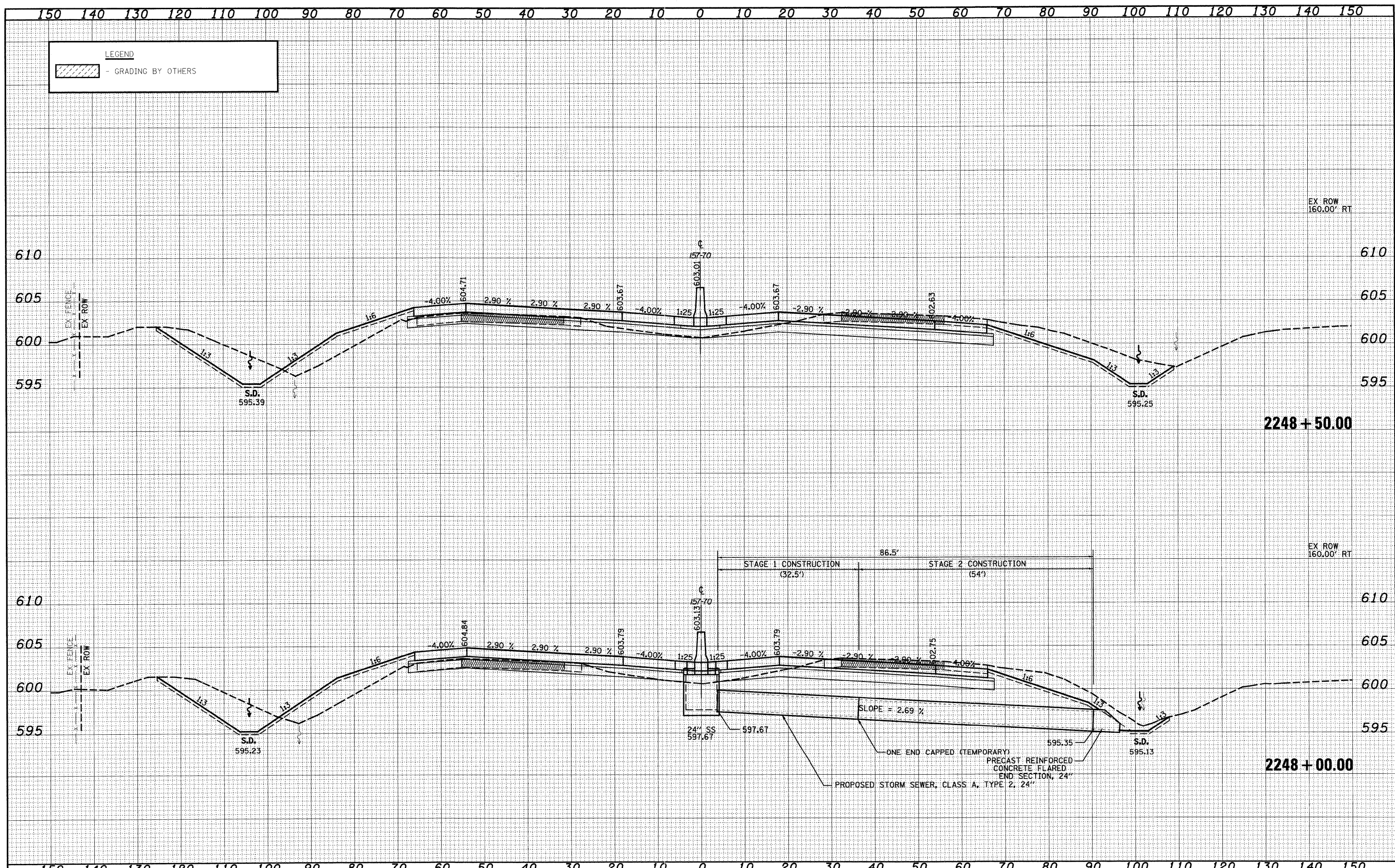


DATE	
BY	
FINAL SURVEY	SURVEYED
NOTE BOOK	PLOTTED
NO.	TEMPLATE
	AREAS CHECKED

DATE	
BY	
ORIGINAL SURVEY	SURVEYED
NOTE BOOK	PLOTTED
NO.	TEMPLATE
	AREAS CHECKED

**LEGEND**  
 - GRADING BY OTHERS



FILE NAME =	USER NAME = betsy	DESIGNED - JWS	REVISED -	<b>STATE OF ILLINOIS</b> <b>DEPARTMENT OF TRANSPORTATION</b>	<b>CROSS SECTIONS FAI 57/70</b>		F.A.I. RTE. 57/70	SECTION (25-3,4)R	COUNTY EFFINGHAM	TOTAL SHEETS 1098	SHEET NO. 603	
50Project\M2-0072.57\Wdy\W.L.Keller\work\Plan_Killer.dwg	PLOT SCALE = 20,00000' / IN.	DRAWN - LEC	REVISED -		SCALE: 1"=10'	SHEET NO. 177 OF 199 SHEETS	STA. 2248+00.00 TO STA. 2248+50.00	FED. ROAD DIST. NO.	ILLINOIS FED. AID PROJECT	CONTRACT NO. 74299		
	PLOT DATE = 3/21/2011	CHECKED - BRM	REVISED -									
		DATE - 4-01-08	REVISED -									