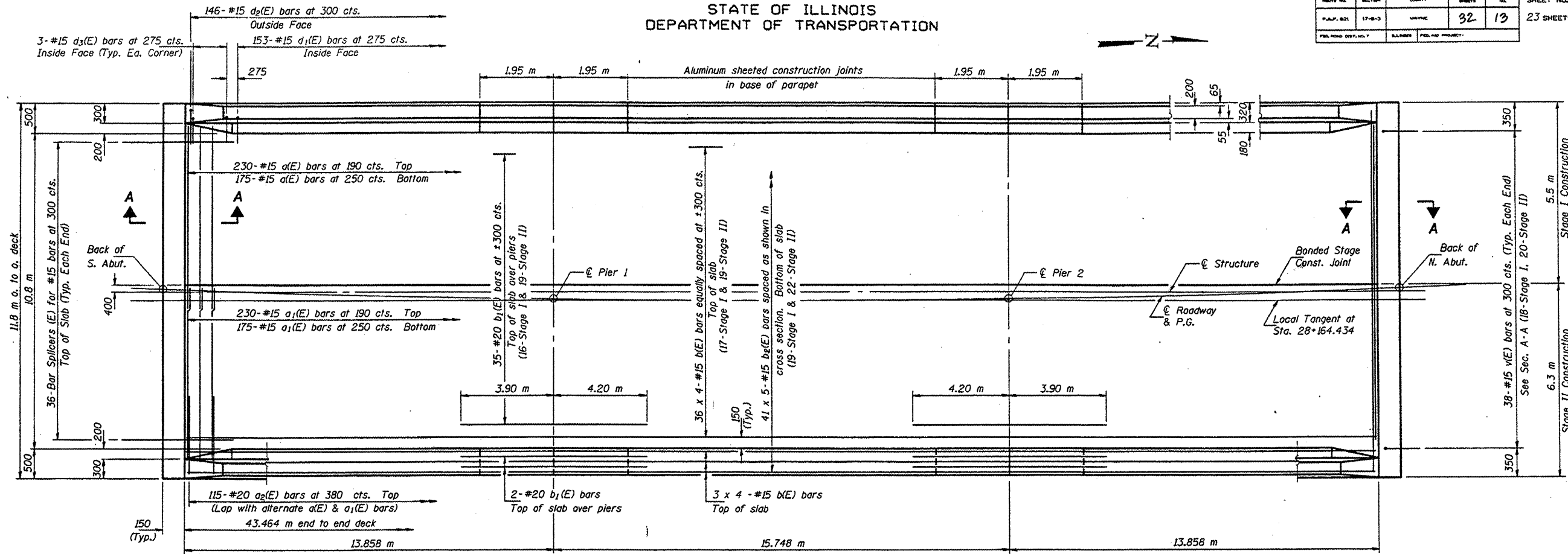


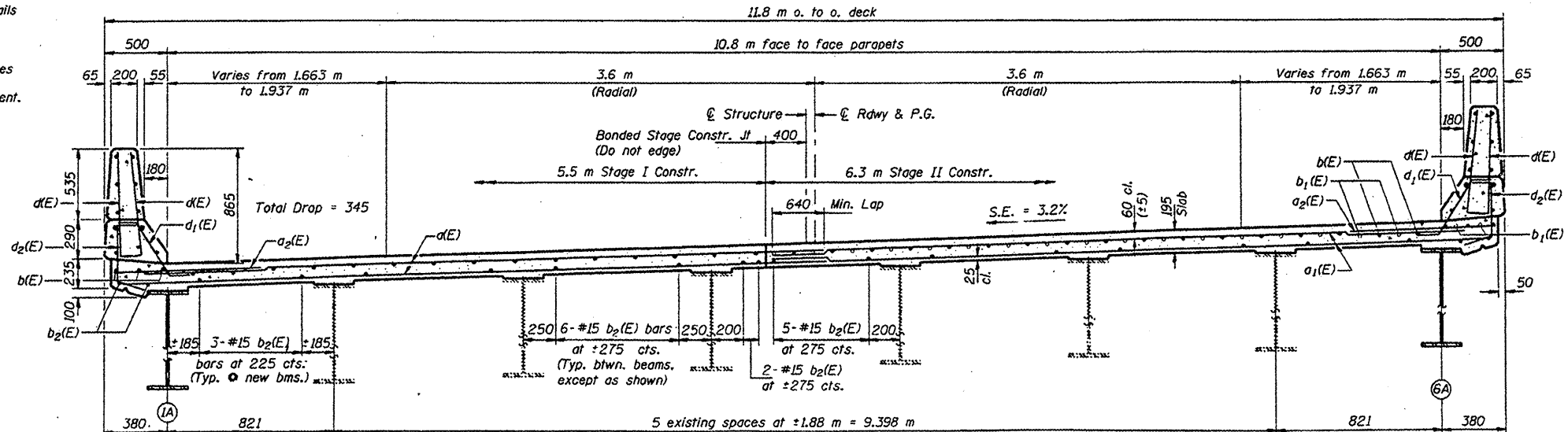
STATE OF ILLINOIS  
DEPARTMENT OF TRANSPORTATION

ROUTE NO.	SECTION	COUNTY	SHEET NO.	SHEET NO.
F.A.P. 821	17-B-3	WAYNE	32	13
SHEET NO. 8				23 SHEETS



PLAN

Notes: See Sheet #9 of 23 for superstructure details and Bill of Material.  
Reinforcement bars designated (E) shall be epoxy coated.  
Bars indicated thus 20 x 3-#15 etc. indicates 20 lines of bars with 3 lengths per line.  
See Sheet #9 of 23 for parapet reinforcement.  
All dimensions are in millimeters (mm) except as noted.  
See Sheet #9 of 23 for Section A-A.  
See Sheet #10 of 23 for diaphragm details.



CROSS SECTION  
(Looking North)

DESIGNED	January 21 1997
CHECKED	
DRAWN	
CHECKED	
S-1-0 (M)	7-1-94

EXAMINED  
PASSED  
Ralph E. Anderson  
ENGINEER OF BRIDGES AND STRUCTURES

SUPERSTRUCTURE  
F.A.P. RTE. 821 - SEC. 17-B-3  
WAYNE COUNTY  
STATION 28+164.434

LOCATION 1

4 OF 16

74529