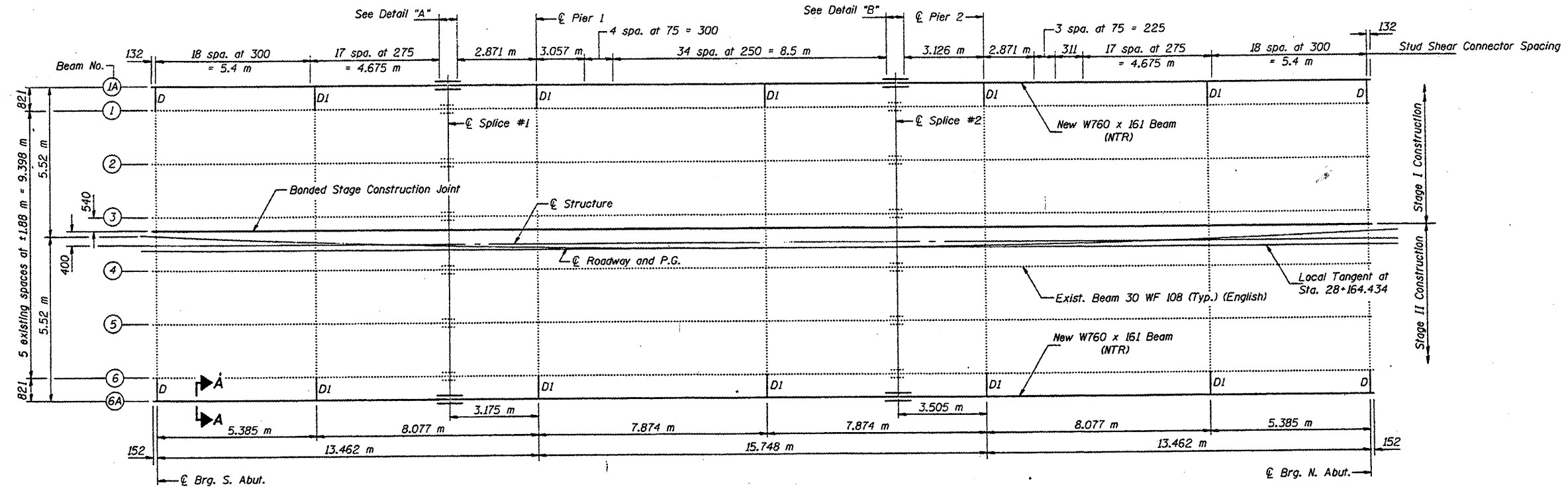
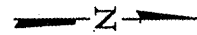


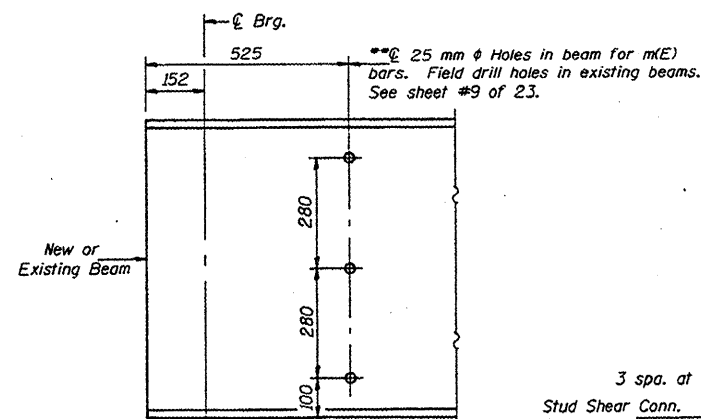
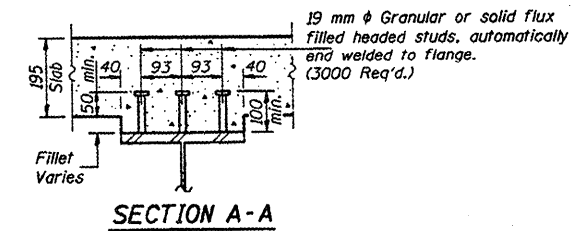
STATE OF ILLINOIS  
DEPARTMENT OF TRANSPORTATION

ROUTE NO.	SECTION	DATE	SHEET	SHEET NO. 12 23 SHEETS
F.A.P. 821	17-B-3	WAYNE	32	
PRIOR DIST. NO. 1	SCALE	PRELIM. PROJECT		



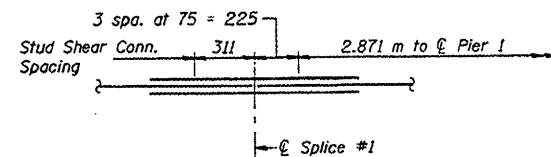
**FRAMING PLAN**

Note:  
"NTR" denotes members to which Notch Toughness Requirements are applicable.



**END OF BEAM DETAIL**

\*\*Cost of drilling holes is included with the cost of "Furnishing & Erecting Structural Steel".

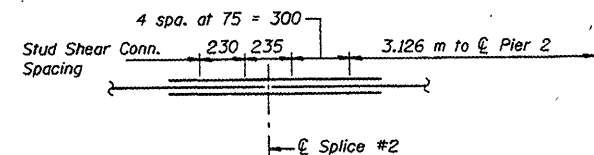


**DETAIL "A"**

**TOP OF BEAM ELEVATIONS**

Location	Beam #1A	Beam #6A
⊖ Brg. S. Abut.	125.563	125.954
⊖ Splice #1	125.52	125.872
⊖ Brg. Pier 1	125.499	125.851
⊖ Splice #2	125.418	125.772
⊖ Brg. Pier 2	125.393	125.755
⊖ Brg. N. Abut.	125.297	125.689

\* For Fabrication only.



**DETAIL "B"**

DESIGNED	James F. Hoff
CHECKED	Steve Nye
DRAWN	r.b. carbonell
CHECKED	JFS 5/11

EXAMINED	January 21, 1997
PASSED	Ralph E. Anderson

STRUCTURAL STEEL  
F.A.P. RTE. 821 - SEC. 17-B-3  
WAYNE COUNTY  
STATION 28+164.434

LOCATION 1

5 OF 16  
74529