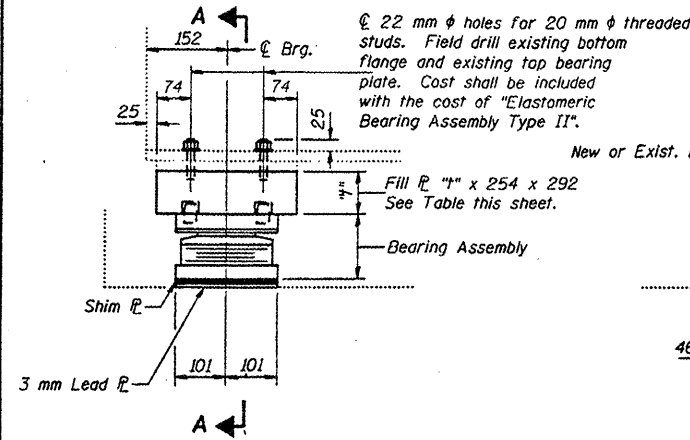
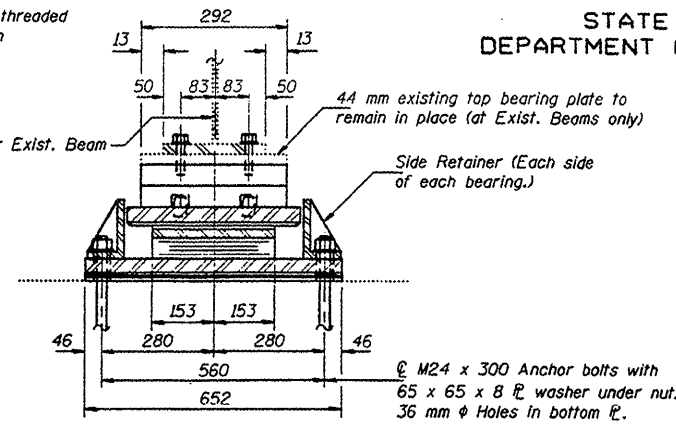


STATE OF ILLINOIS
DEPARTMENT OF TRANSPORTATION

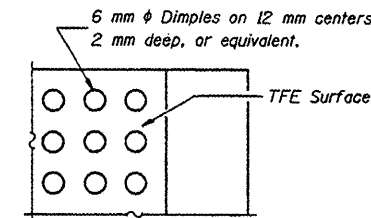
ROUTE NO.	SECTION	COUNTY	POST MILE	SHEET NO.
F.A.P. 821	17-B-3	WAYNE	32	20
TOTAL SHEETS				23 SHEETS



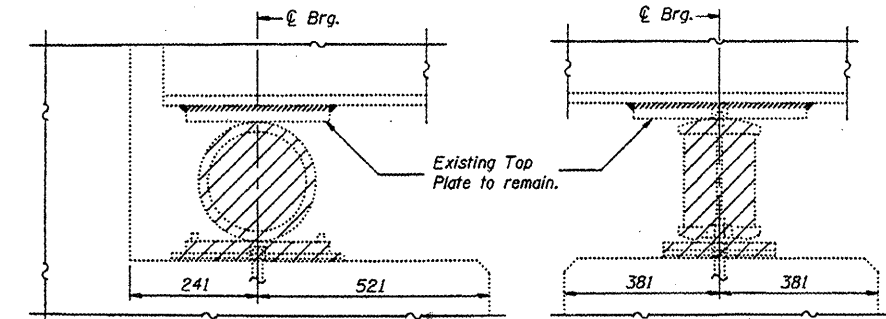
ELEVATION AT SOUTH ABUT.



SECTION A-A



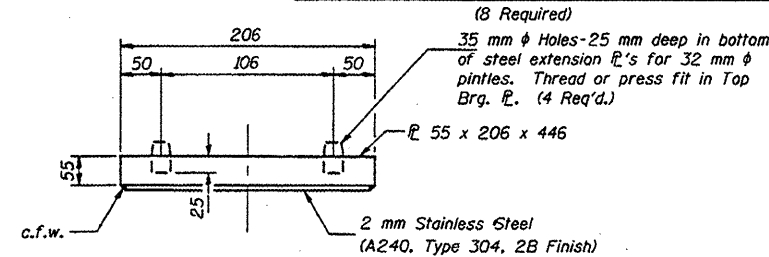
PLAN-TFE SURFACE



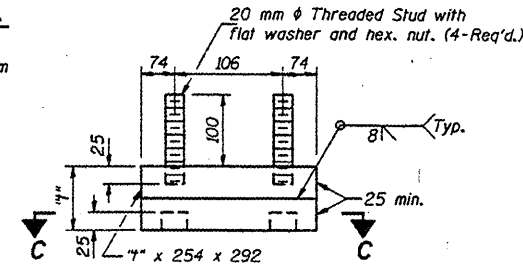
AT ABUTMENTS

AT PIER #1

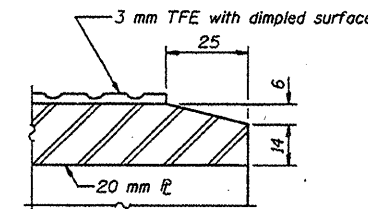
TYPE II TFE ELASTOMERIC EXP. BRG.



TOP BEARING ASSEMBLY



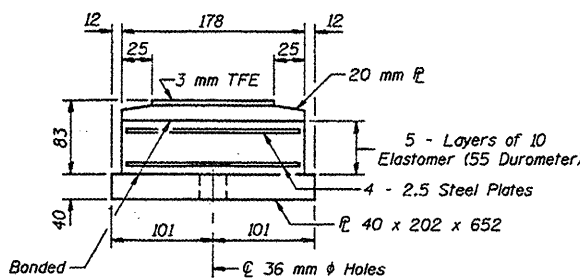
STEEL EXTENSION DETAIL



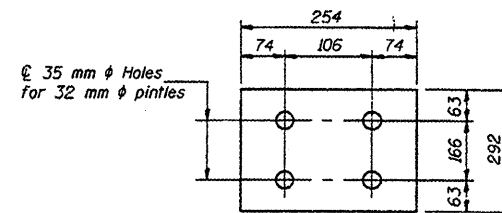
SECTION THRU TFE

Note: The 3 mm TFE sheet shall be bonded directly to the top steel plate with a two-component, medium viscosity epoxy resin, conforming to the requirements of the Federal Specification MMM-A-134, Type I. The bond agent shall be applied on the full area of the contact surfaces.

Bonding of 3 mm TFE sheet during vulcanizing process will be permitted provided the process and method of adjusting assembly height is approved by the Engineer.



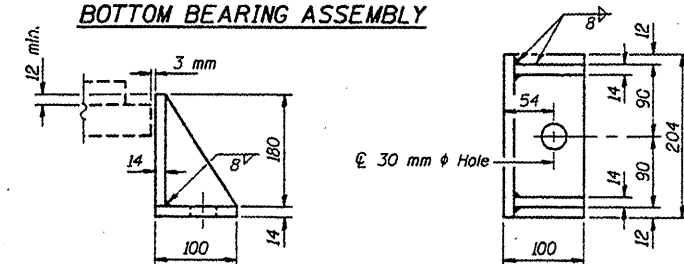
BOTTOM BEARING ASSEMBLY



SECTION C-C

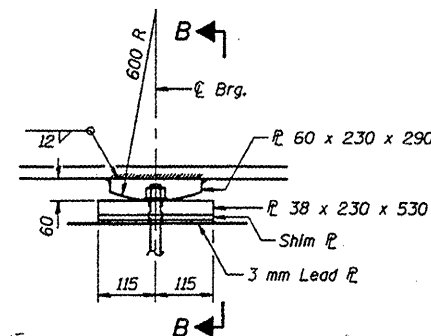
DIMENSION "D"

Beam	1A	1	2	3	4	5	6	6A
S. Abut.	73	101	102	96	98	93	90	73



SIDE RETAINER

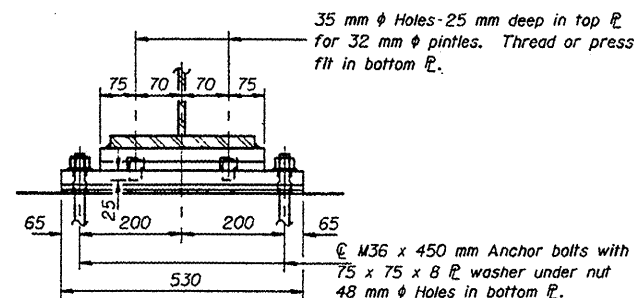
Equivalent rolled angle with stiffeners will be allowed in lieu of welded plates. Weight included with Structural Steel.



ELEVATION AT PIER 2

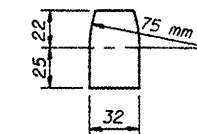
FIXED BEARING AT PIER 2

(At new beams only)
(2 Required)



SECTION B-B

Note: For anchor bolt installation details see sheet #16 of 23.



PINTLE

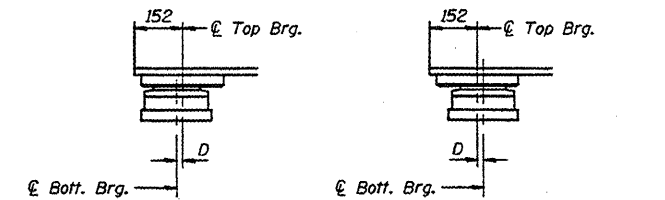
LOCATION 1

JACK AND REMOVE EXISTING BEARING

Hatched area indicates removal of existing bearing.

JACK AND REMOVE EXISTING BEARING PROCEDURE

- The Contractor shall submit for approval by the Engineer, plans for jacking & cribbing prior to commencing any work at the bearings.
- Jacking and removing existing bearings shall be done after deck removal is completed and before the new deck is poured.
- Jacking shall be limited to a maximum of 3 mm lift to remove the existing bearing assembly, utilizing a jack or series of jacks. The max. dead load reaction at each beam with the deck removed is 30 kN at Piers and 10 kN at Abutments. The Minimum Jack Capacity for each beam is 60 kN at Piers and 20 kN at Abutments.
- Remove the existing anchor bolts flush with the concrete surface and grind smooth. The rocker and bottom plates shall be removed leaving the existing top plate intact. The bottom flange area of the beam and existing top plate shall be cleaned and painted as specified for structural steel.
- The new bearings and steel extensions shall be in place and the jacks shall be lowered before the new deck is poured.



BELOW 10°C.

(Move bott. brg. away from fixed brg.)

ABOVE 10°C.

(Move bott. brg. toward fixed brg.)

SETTING ANCHOR BOLTS AT EXP. BRG.

D = 1 mm per each 10 m of expansion for every 8° temp. change from the normal temp. of 10°C.

BILL OF MATERIAL

Item	Unit	Total
Elastomeric Bearing Assembly Type II	Each	8
Jack and Remove Existing Bearings	Each	6

PIER 2 AND SOUTH ABUTMENT

BEARING DETAILS

F.A.P. RTE. 821 - SEC. 17-B-3

WAYNE COUNTY

STATION 28+164.434

5C OF 16

74529

DESIGNED	January 21, 1997
CHECKED	
DRAWN	
CHECKED	

EXAMINED
PASSED