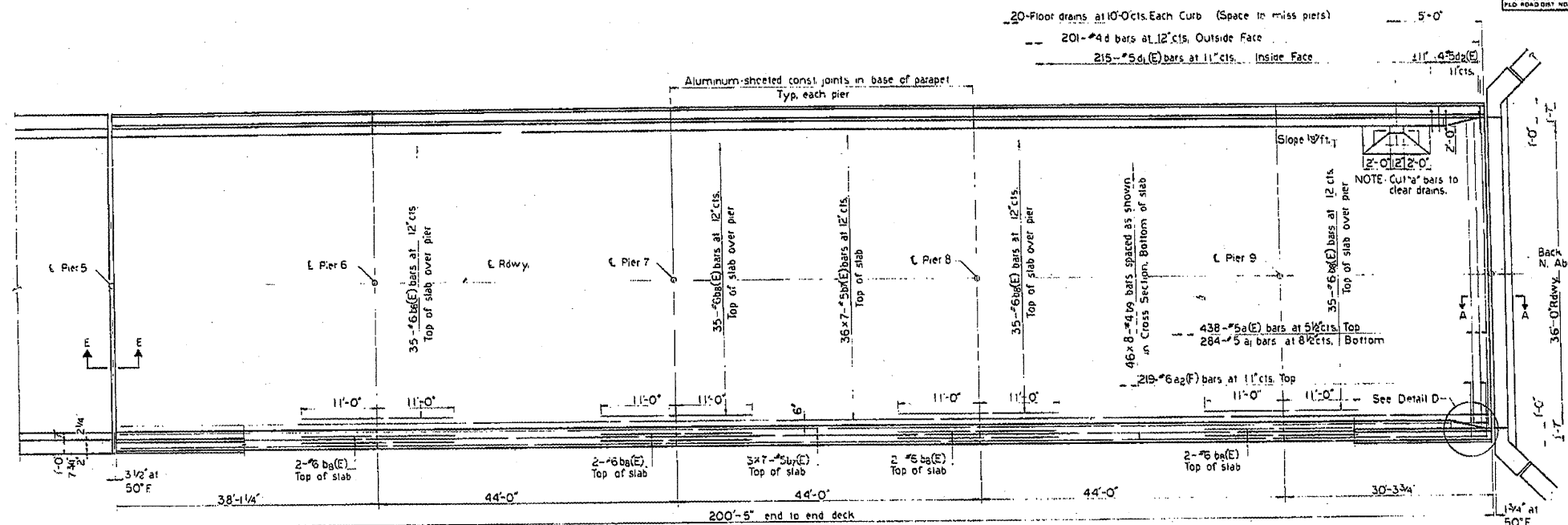
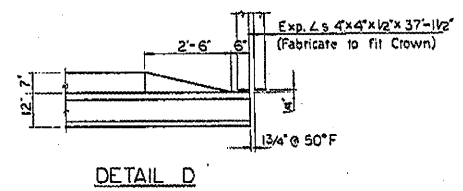


ROUTE NO.	SECTION	COUNTY	TOTAL SHEETS	SHEET NO.
FA. 821	17BR-1	WAYNE	27	11
FILED ROAD DIST. NO. 7	ILLINOIS PROJECT	Sheet 7 of 18		



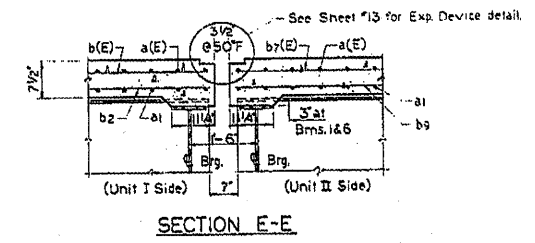
PLAN
UNIT II



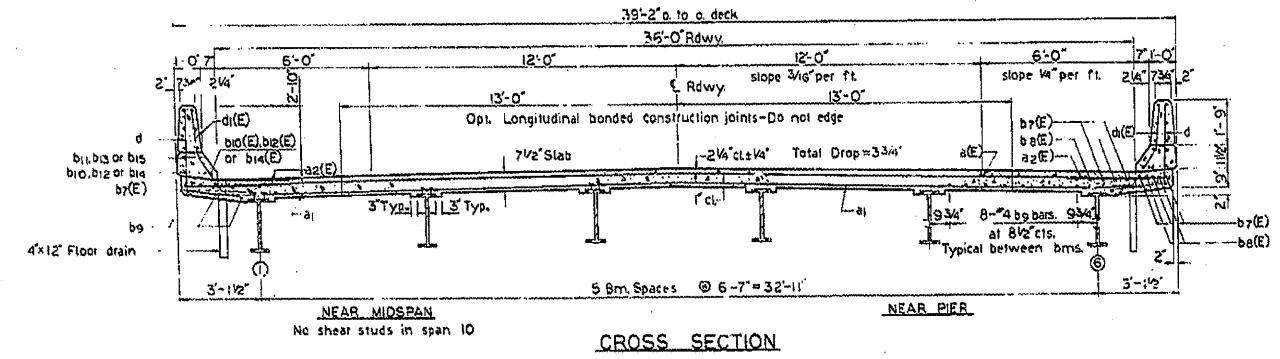
DETAIL D

Min. Lap Length

#4 bars	1'-4"
#5 bars	1'-8"
#6 bars	3'-0"



SECTION E-E



CROSS SECTION

NOTES:
See Sheet #8 for Superstructure details and Bill of Materials.
Reinforcement bars designated (E) shall be epoxy-coated.
See Special Provisions.
Bars shown thus 36 #7-5 etc. indicate 36 lines of bars with 7 lengths per line.

UNIT II
SUPERSTRUCTURE
F.A.R.T. 821 SEC. 17BR-1
WAYNE COUNTY
STA. 957 + 95.03

MTA, INCORPORATED

DESIGNED: [Signature] CHECKED: [Signature] DATE: 11-5-78 NO. 0701

10 8 16
74529