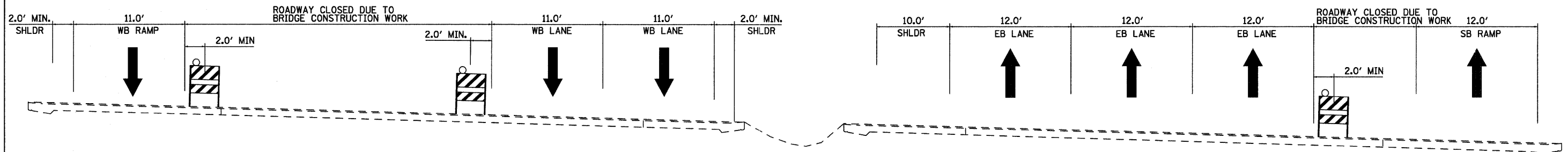


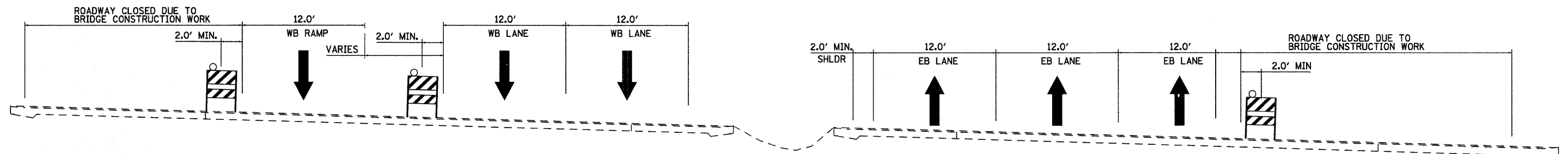
STAGE 2

INTERSTATE 64 STATION 242+64.02 TO STATION 251+52.58



STAGE 2 /STAGE 2A

INTERSTATE 64 STATION 256+44.78 TO STATION 265+76.61



STAGE 2A

INTERSTATE 64 STATION 242+64.02 TO STATION 247+21.66

FILE NAME = D076415-sht-Typical Roadway.dgn

USER NAME = tbonnell
 DESIGNED -
 DRAWN -
 PLOT SCALE = 5.0000' / 1" / in.
 CHECKED -
 PLOT DATE = 11/18/2011
 DATE -

REVISED -
 REVISED -
 REVISED -
 REVISED -

**STATE OF ILLINOIS
 DEPARTMENT OF TRANSPORTATION**

**SUGGESTED STAGES OF CONSTRUCTION AND
 TRAFFIC CONTROL - TYPICAL SECTIONS**

SCALE: 1"=5' SHEET NO. 1 OF 2 SHEETS STA. TO STA.

F.A. RTE.	SECTION	COUNTY	TOTAL SHEETS	SHEET NO.
64	82-(3,4)RS	ST. CLAIR	167	34
CONTRACT NO. 76415				
FED. ROAD DISTRICT 8 ILLINOIS FED. AID PROJECT				