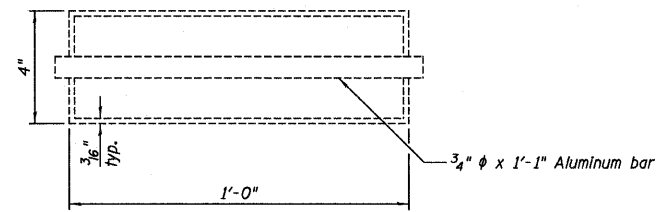


DRAIN ELIMINATION DETAIL



TOP PLAN OF DRAIN

LEGEND

- Deck Slab Repair (Partial)
- Concrete Removal for Expansion Joint Replacement (see Sheets B10 thru B12)
- Longitudinal Joint Closure (see Sheets B17 thru B19)
- 4" Core Hole (see "Bridge Deck Microsilica Concrete Overlay" Special Provisions for repair requirements)

BILL OF MATERIAL

ITEM	UNIT	TOTAL
Plug Existing Deck Drains	Each	10
* Deck Slab Repair (Partial)	Sq. Yd.	295

* FOR INFORMATION ONLY

NOTE:

All dimensions to deck slab repair areas are from the face of parapet to the location shown unless noted otherwise.

Farnsworth GROUP, INC.
2709 McGraw Drive
Schaumburg, Illinois 61104
309/863-8435, 309/863-1571 fax

DESIGNED - JCZ	REVISÉ
CHECKED - JML	REVISÉ
DRAWN - DJM/JWK	REVISÉ
CHECKED - MSW	REVISÉ

STATE OF ILLINOIS
DEPARTMENT OF TRANSPORTATION

TOP OF DECK REPAIR, EASTBOUND ROADWAY
STRUCTURE NO. 082-0169 (E.B.)
STRUCTURE NO. 082-0170 (W.B.)
SHEET NO. B6 OF 34 SHEETS

F.A.I. RTE.	SECTION	COUNTY	TOTAL SHEETS	SHEET NO.
64	82-(3,4)RS	ST. CLAIR	167	127
				CONTRACT NO. 76415
ILLINOIS FED. AID PROJECT				