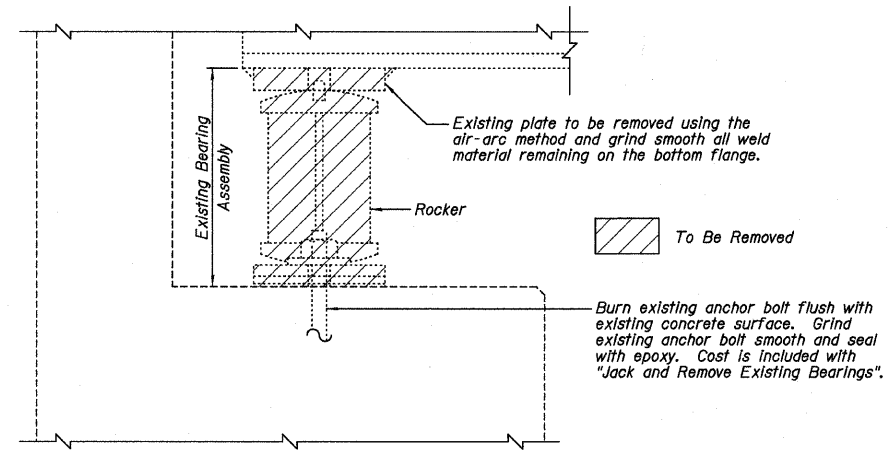
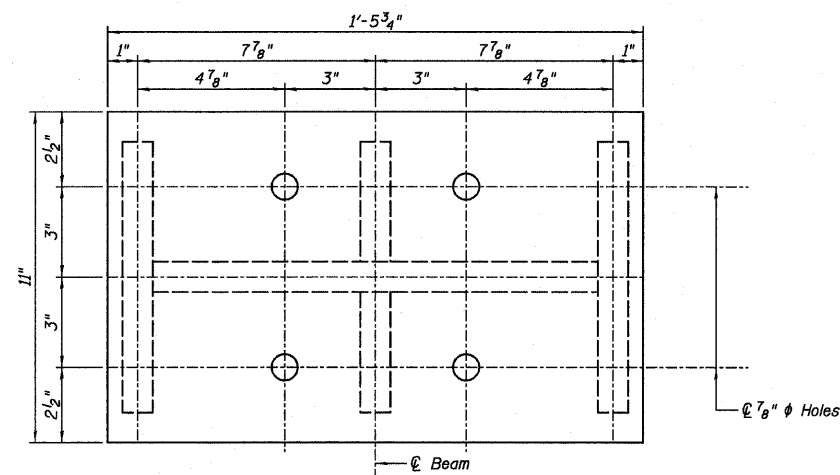


Interior Beam Reaction Table (E.B.)		
	Abutments	Piers
RP (k)	17	52
R <sub>L</sub> (k)	34	45
Imp. (k)	10	13
R total (k)	61	110

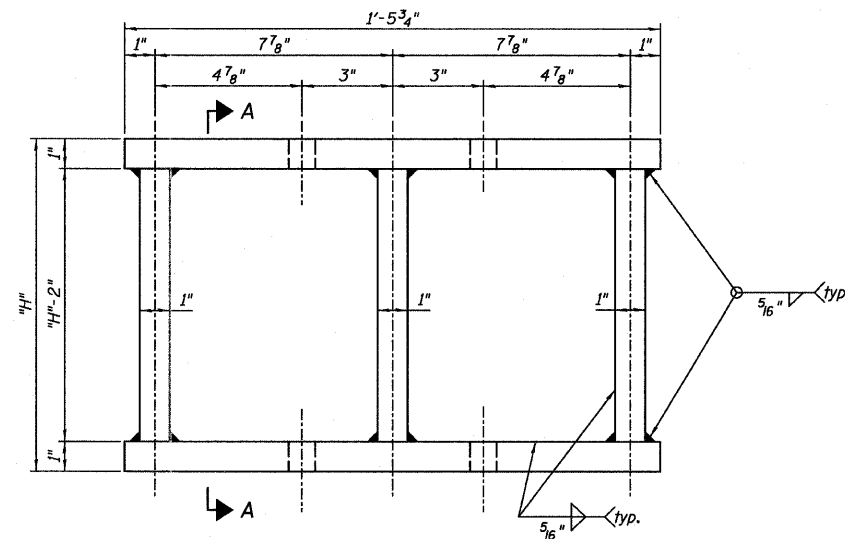
Interior Beam Reaction Table (W.B.)		
	Abutments	Piers
RP (k)	17	52
R <sub>L</sub> (k)	36	47
Imp. (k)	11	14
R total (k)	64	113



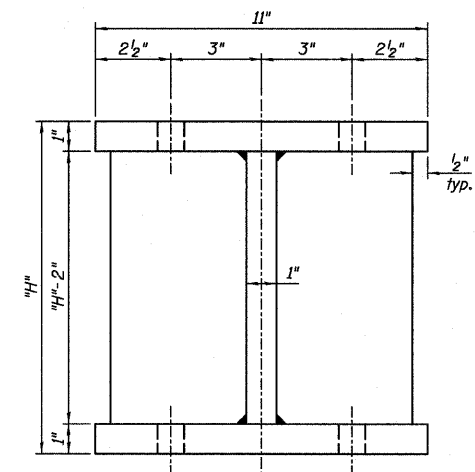
EXISTING BEARING REMOVAL DETAIL



PLAN STEEL EXTENSION



ELEVATION STEEL EXTENSION



SECTION A-A

Dimension "H" (in.)			
Beam No.	West Abut.	Pier No. 2	East Abut.
A-F	10 5/16"	9 1/16"	8 9/16"
I-B	10 5/16"	9 7/16"	8 9/16"
G-H	10 5/16"	9 1/16"	8 9/16"
9-20	10 5/16"	9 1/16"	8 9/16"
I-P	10 5/16"	9 1/16"	8 9/16"

BILL OF MATERIAL

ITEM	UNIT	082-0169	082-0170	TOTAL
Furnishing and Erecting Structural Steel	Pound	12,650	9,080	21,730
Jack And Remove Existing Bearings	Each	63	45	108

NOTES:

- 1.) Prior to ordering any material, the Contractor shall verify in the field all bearing heights and shim thickness dimensions.
- 2.) For location of Steel Extensions see Sheets B24 thru B26.

**Farnsworth**  
GROUP, INC.  
2709 McGraw Drive  
Bloomington, Illinois 61704  
309/663-8435, 309/663-1571 fax

DESIGNED - JCZ	REVISION
CHECKED - JML	REVISION
DRAWN - DJM/JWK	REVISION
DATE - 12/05/11	CHECKED - MSW
	REVISION

STATE OF ILLINOIS  
DEPARTMENT OF TRANSPORTATION

BEARING DETAILS AND NOTES  
STRUCTURE NO. 082-0169 (E.B.)  
STRUCTURE NO. 082-0170 (W.B.)

F.A.I. RTE.	SECTION	COUNTY	TOTAL SHEETS	SHEET NO.
64	82-(3,4)RS	ST. CLAIR	167	144
CONTRACT NO. 76415				
ILLINOIS FED. AID PROJECT				

SHEET NO. B23 OF 34 SHEETS