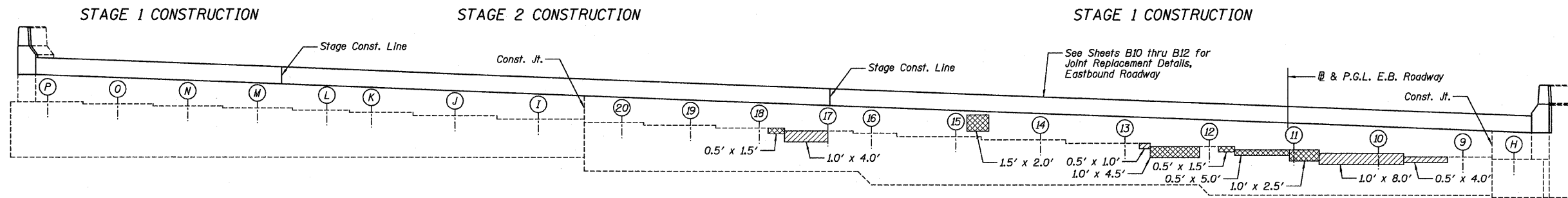
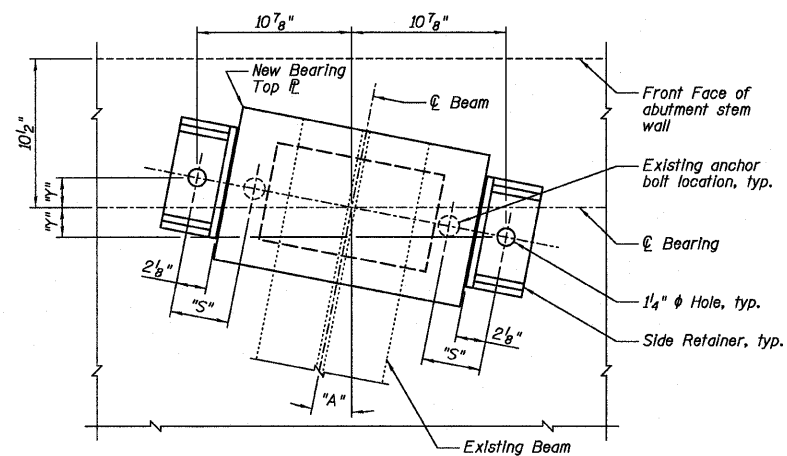


TOP VIEW



ELEVATION



BEARING PLAN AT ABUTMENT

Beam No.	Angle		Dimension	
	"A"	"S"	"x"	"y"
H	11°02'00"	4 1/8"	2 1/2"	
9-20	11°02'00"	4 1/8"	2 1/2"	
I-M	11°02'00"	4 1/8"	2 1/2"	
N	11°02'00"	2 1/4"	2 1/2"	
O	11°56'22"	2 1/4"	2 1/4"	
P	12°50'23"	2 1/4"	2 1/2"	

LEGEND

	Structural Repair of Concrete (Depth Equal to or Less than 5 Inches)
	Structural Repair of Concrete (Depth Greater than 5 Inches)

BILL OF MATERIAL

ITEM	UNIT	TOTAL
Structural Repair of Concrete (Depth Equal to or Less than 5 Inches)	Sq. Ft.	30
Structural Repair of Concrete (Depth Greater than 5 Inches)	Sq. Ft.	39

Farnsworth GROUP, INC.
2709 McGraw Drive
Bloomington, Illinois 61704
309/663-8435, 309/663-1571 fax

DESIGNED - JCZ
CHECKED - JML
DRAWN - DJM/JWK
DATE - 12/05/11

REVISOR
REVISOR
REVISOR
REVISOR

STATE OF ILLINOIS
DEPARTMENT OF TRANSPORTATION

WEST ABUTMENT, EASTBOUND ROADWAY
STRUCTURE NO. 082-0169 (E.B.)
STRUCTURE NO. 082-0170 (W.B.)

SHEET NO. B27 OF 34 SHEETS

F.A.I. RTE.	SECTION	COUNTY	TOTAL SHEETS	SHEET NO.
64	82-(3,4)RS	ST. CLAIR	167	148
CONTRACT NO. 76415				
ILLINOIS FED. AID PROJECT				