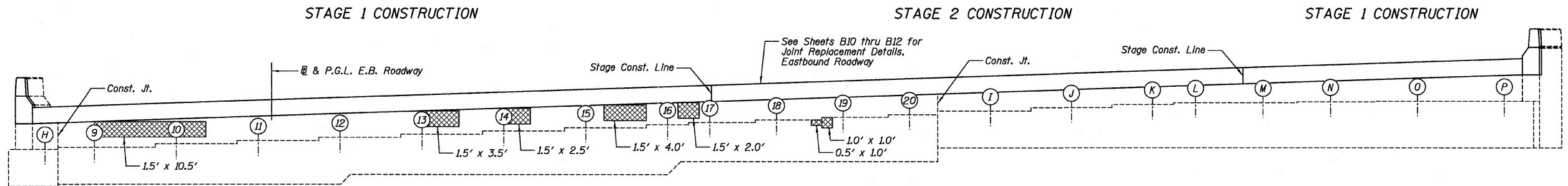
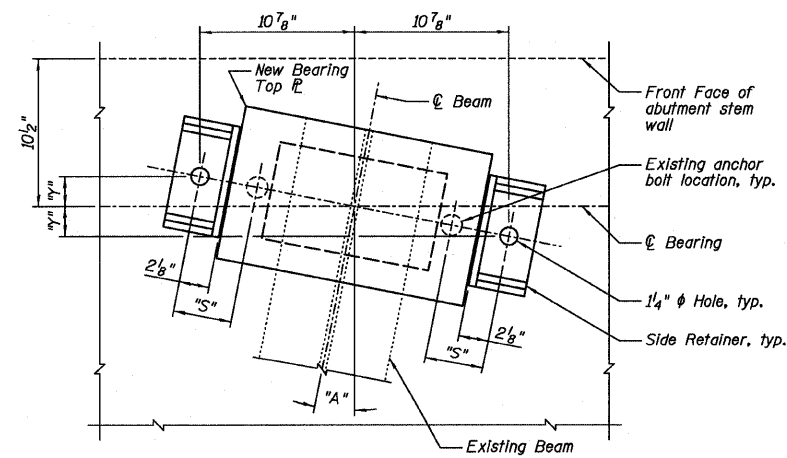


TOP VIEW



ELEVATION



BEARING PLAN AT ABUTMENT

| Beam No. | Angle     |        | Dimension |     |
|----------|-----------|--------|-----------|-----|
|          | "A"       | "S"    | "S"       | "R" |
| H        | 11°02'00" | 4 1/8" | 2 1/8"    |     |
| 9-20     | 11°02'00" | 4 1/8" | 2 1/8"    |     |
| I-M      | 11°02'00" | 4 1/8" | 2 1/8"    |     |
| N        | 11°02'00" | 2 1/4" | 2 1/8"    |     |
| O        | 11°56'22" | 2 1/4" | 2 1/4"    |     |
| P        | 12°50'23" | 2 1/4" | 2 1/2"    |     |

**LEGEND**  
 Structural Repair of Concrete (Depth Equal to or Less than 5 Inches)

**BILL OF MATERIAL**

| ITEM   | UNIT    | TOTAL |
|--|---------|-------|
| Structural Repair of Concrete (Depth Equal to or Less than 5 Inches) | Sq. Ft. | 36    |

**Farnsworth GROUP, INC.**  
 2709 McCraw Drive  
 Bloomington, Illinois 61704  
 309/663-8436, 309/663-1571 fax

|                 |        |
|-----------------|--------|
| DESIGNED - JCZ  | REVISÉ |
| CHECKED - JML   | REVISÉ |
| DRAWN - DJM/JWK | REVISÉ |
| CHECKED - MSW   | REVISÉ |

STATE OF ILLINOIS  
 DEPARTMENT OF TRANSPORTATION

EAST ABUTMENT, EASTBOUND ROADWAY  
 STRUCTURE NO. 082-0169 (E.B.)  
 STRUCTURE NO. 082-0170 (W.B.)

|                    |                    |                  |                           |               |
|--------------------|--------------------|------------------|---------------------------|---------------|
| F.A.I. RTE. 64     | SECTION 82-(3,4)RS | COUNTY ST. CLAIR | TOTAL SHEETS 167          | SHEET NO. 149 |
| CONTRACT NO. 76415 |                    |                  | ILLINOIS FED. AID PROJECT |               |

SHEET NO. B28 OF 34 SHEETS