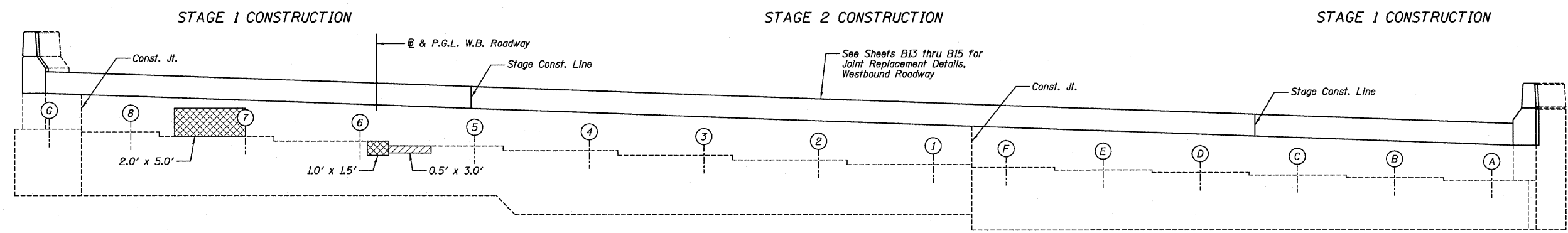
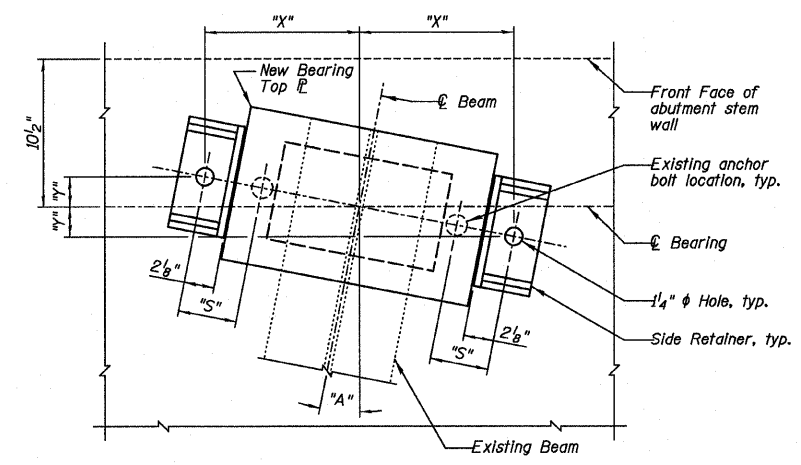


TOP VIEW



ELEVATION



BEARING PLAN AT ABUTMENT

Beam No.	Angle		Dimension		
	"A"	"S"	"X"	"Y"	"Z"
A	09°01'45"	4 1/8"	11"	1 3/8"	
B	09°31'57"	4 1/8"	11"	1 15/16"	
C	10°02'03"	4 1/8"	10 15/16"	1 15/16"	
D	10°32'05"	4 1/8"	10 15/16"	2 1/8"	
E	10°47'03"	4 1/8"	10 15/16"	2 1/8"	
F	11°02'00"	4 1/8"	10 15/16"	2 1/8"	
I-B	11°02'00"	2 5/8"	10 15/16"	2 1/8"	
G	11°02'00"	4 1/8"	10 15/16"	2 1/8"	

LEGEND

- Structural Repair of Concrete (Depth Equal to or Less than 5 Inches)
- Structural Repair of Concrete (Depth Greater than 5 Inches)

BILL OF MATERIAL

ITEM	UNIT	TOTAL
Structural Repair of Concrete (Depth Equal to or Less than 5 Inches)	Sq. Ft.	12
Structural Repair of Concrete (Depth Greater than 5 Inches)	Sq. Ft.	3

Farnsworth GROUP, INC.
 2709 McGraw Drive
 Bloomington, Illinois 61704
 309/663-8435, 309/663-1571 fax

DESIGNED - JCZ
 CHECKED - JML
 DRAWN - DJM/JWK
 DATE - 12/05/11

REVISOR
 REVISION
 REVISION
 REVISION

STATE OF ILLINOIS
 DEPARTMENT OF TRANSPORTATION

WEST ABUTMENT, WESTBOUND ROADWAY
 STRUCTURE NO. 082-0169 (E.B.)
 STRUCTURE NO. 082-0170 (W.B.)
 SHEET NO. B29 OF 34 SHEETS

F.A.I. RTE.	SECTION	COUNTY	TOTAL SHEETS	SHEET NO.
64	82-(3,4)RS	ST. CLAIR	167	150
CONTRACT NO. 76415				
ILLINOIS FED. AID PROJECT				