

F.A.P. RTE.	SECTION	COUNTY	TOTAL SHEETS	SHEET NO.
998	82-2-1K	ST. CLAIR	353	1
FED. ROAD DIST. NO.	ILLINOIS	CONTRACT NO. 76E06		

#353+1 = 354

D-98-059-08



LOCATION OF SECTION INDICATED THIS: - [shaded box] -

LINE ENGINEERING, LTD.
Consulting Engineers
Chatham, Illinois
Westmont, Illinois

ABNA
engineering

STATE OF ILLINOIS
DEPARTMENT OF TRANSPORTATION
DIVISION OF HIGHWAYS

SUBMITTED Oct 25th 2011

James L. [Signature]
DEPUTY DIRECTOR OF HIGHWAYS, REGION ENGINEER

December 9, 2011
Scott E. Stitt P.E. [Signature]
acting ENGINEER OF DESIGN AND ENVIRONMENT

December 9, 2011
William R. Frenke [Signature]
Interim DIRECTOR OF HIGHWAYS, CHIEF ENGINEER

PRINTED BY THE AUTHORITY OF THE STATE OF ILLINOIS

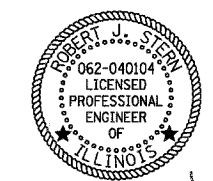
STATE OF ILLINOIS
DEPARTMENT OF TRANSPORTATION
DIVISION OF HIGHWAYS

PROPOSED HIGHWAY PLANS

FAP ROUTE 998 (RELOCATED I-70)
SECTION 82-2-1K

ST. CLAIR COUNTY
C-98-093-10

PROPOSED RELOCATED
IL ROUTE 3 INTERCHANGE
AT RELOCATED I-70 AND
ITS COMMUNICATION



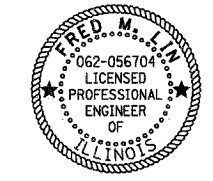
Robert J. Stern [Signature]
ROBERT J. STERN
EXPIRES: 11/30/2011
DATE: 10/17/2011
SHEETS: 1-79, 110-137, 175-193, 217, 227-260, 277-353



Byron T. Danley [Signature]
BYRON T. DANLEY
EXPIRES: 11/30/12
DATE: 10/17/11
SHEETS: 218-226, 271-276



Francis S. Mack [Signature]
FRANCIS S. MACK
EXPIRES: 11/30/2011
DATE: 10/13/2011
SHEETS: 261-270



Fred M. Lin [Signature]
FRED M. LIN
EXPIRES: 11/30/2013
DATE: 10/14/2011
SHEETS: 80-109, 184-216

TENG

TENG & ASSOCIATES, INC.
ENGINEERS/ARCHITECTS/PLANNERS
205 N. MICHIGAN AVE., CHICAGO, IL 60601
TELEPHONE: 312/616-0000

LIST OF STRUCTURAL WORK

NORTH APPROACH SLAB ONLY
RELOCATED IL RTE 3 OVER I-70
STR. NO. 082-0328 PROPOSED RELOCATED IL RTE 3 BRIDGE
BACK OF ABUTMENT STA. 1684+40.93

SOUTH APPROACH SLAB ONLY
RELOCATED IL RTE 3 OVER TRRA AND ST. CLAIR AVE.
STR. NO. 082-0329 PROPOSED RELOCATED IL RTE 3 BRIDGE
BACK OF ABUTMENT STA. 1677+17.25

FOR INDEX OF SHEETS, SEE SHEET NO. 2

INTERSTATE 70
ADT = 59,940 (2030) 6,594 (30) INTERSTATE 48.96 (PCC-20)
DESIGN SPEED = 60 MPH
POSTED SPEED = 55 MPH

RELOCATED IL ROUTE 3
ADT = 34,760 (2030) 3,476 (30) PRINCIPAL ARTERIAL 18.46 (PCC-20)
DESIGN SPEED = 45 MPH
POSTED SPEED = 40 MPH

RAMPS A-D
DESIGN SPEED = 50 MPH AT GORE, 35 MPH AT END
POSTED SPEED = 30 MPH
RAMP A ADT = 12,610 (2030) 1,214(30) INTERSTATE RAMP 14.30 (PCC-20)
RAMP B ADT = 6,010 (2030) 443(30) INTERSTATE RAMP 7.13 (PCC-20)
RAMP C ADT = 16,940 (2030) 1,690 (30) INTERSTATE RAMP 17.20 (PCC-20)
RAMP D ADT = 16,940 (2030) 1,690 (30) INTERSTATE RAMP 17.20 (PCC-20)

CONNECTOR ROAD
ADT = 26,550 (2030) 2,655 (30) COLLECTOR 9.40 (PCC-20)
DESIGN SPEED = 35 MPH
POSTED SPEED = 30 MPH

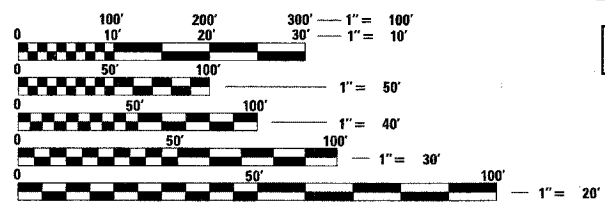
EXCHANGE AVENUE
ADT = 16,940 (2030) 1,694 (30) COLLECTOR 7.26 (PCC-20)
DESIGN SPEED = 30 MPH
POSTED SPEED = 25 MPH

EXISTING IL ROUTE 3 (ST. CLAIR AVE.)
ADT = 9,000 (2008), 26,190 (2030) 2,619 (30) MINOR ARTERIAL 7.60 (FD-20)
DESIGN SPEED = 40 MPH (S. OF TRRA CROSSING)
DESIGN SPEED = 50 MPH (N. OF TRRA CROSSING)
POSTED SPEED = 35 MPH (S. OF TRRA CROSSING)
POSTED SPEED = 45 MPH (N. OF TRRA CROSSING)

1ST STREET
ADT = 1,350 (2008), 1,700 (2030)
DESIGN SPEED = 35 MPH
POSTED SPEED = 30 MPH

PROJECT LOCATED IN: FAIRMONT CITY, ILLINOIS
EAST ST. LOUIS, ILLINOIS

PLANS 1"=50'
PROFILES 1"=5'
X-SECTIONS 1"=10' H
1"=5' V

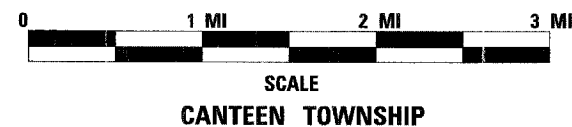
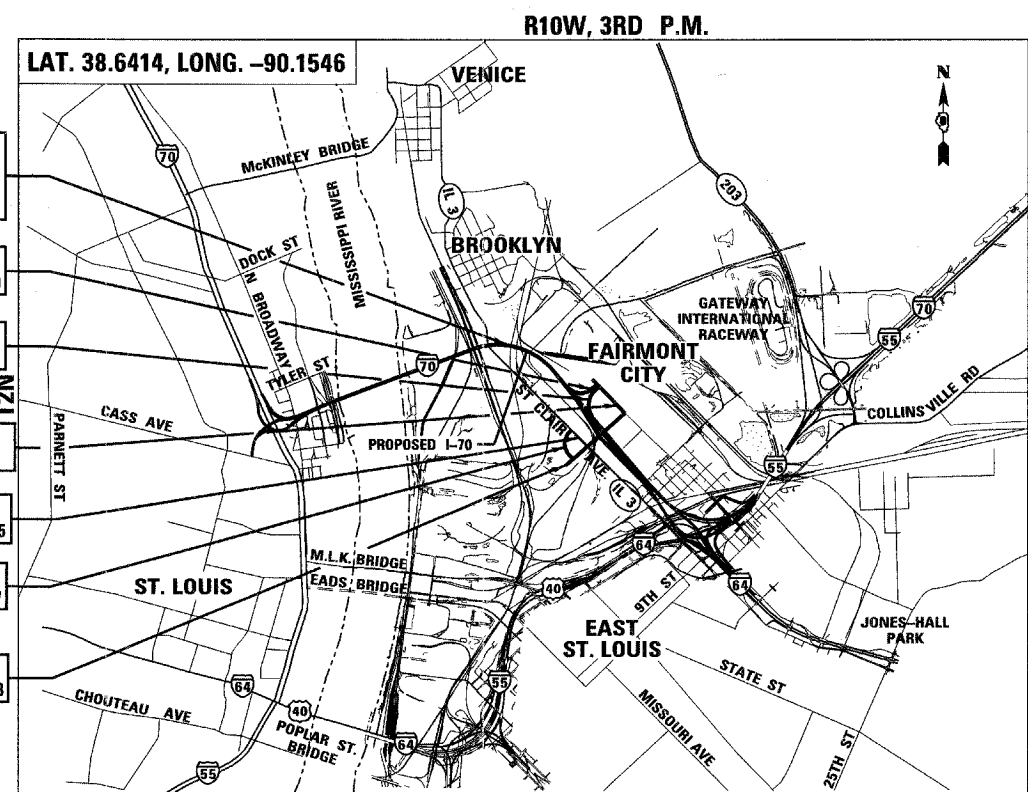


FULL SIZE PLANS HAVE BEEN PREPARED USING STANDARD ENGINEERING SCALES. REDUCED SIZED PLANS WILL NOT CONFORM TO STANDARD SCALES. IN MAKING MEASUREMENTS ON REDUCED PLANS, THE ABOVE SCALES MAY BE USED.

J.U.L.I.E.
JOINT UTILITY LOCATION INFORMATION FOR EXCAVATION
1-800-892-0123
OR 811

PROJECT ENGINEER : MICHAEL D. PRITCHETT (618) 346-3180
PROJECT MANAGER : JANE CHASTAIN MERCER (618) 346-3206

CONTRACT NO. 76E06



GROSS /NET LENGTH OF PROJECT:	20,658' (3.91 MI)
I-70 /I-55	11,462' (2.17 MI)
EXCHANGE AVE.	2,031' (0.385 MI)
RAMP C	1,013' (0.192 MI)
RAMP D	800' (0.152 MI)
ST. CLAIR AVE.	1,585' (0.300 MI)
ST. CLAIR AVE. CONNECTOR	1,254' (0.238 MI)
RELOCATED IL ROUTE 3	2,513' (0.476 MI)