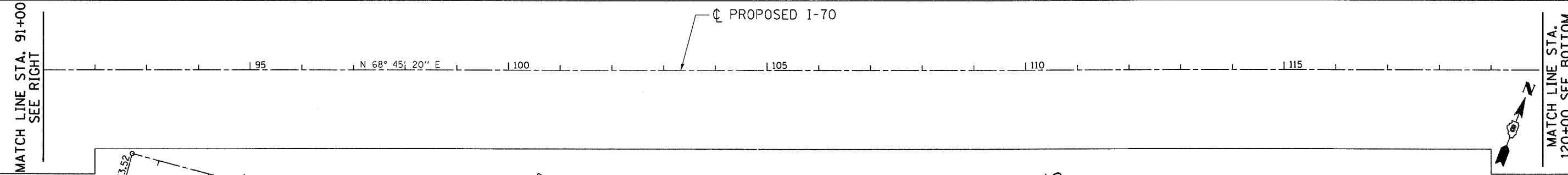
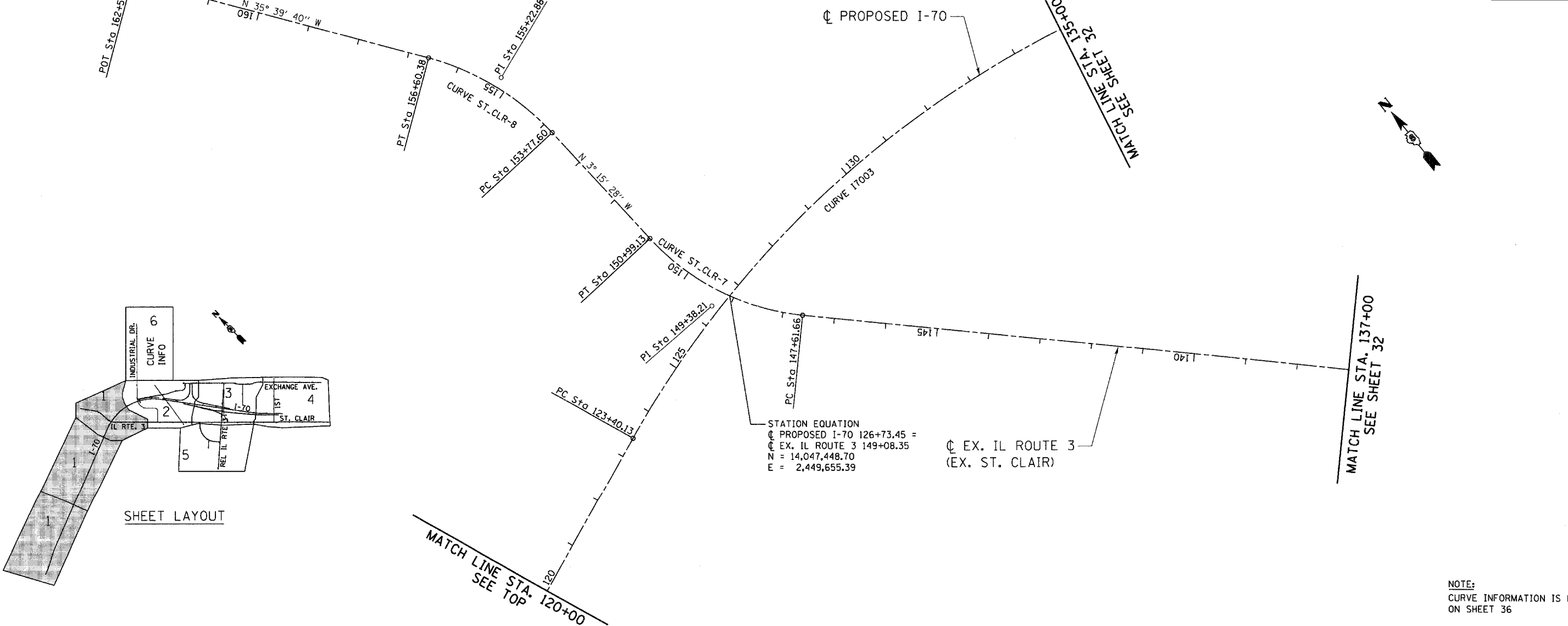


MATCH LINE STA. 91+00
SEE LEFT



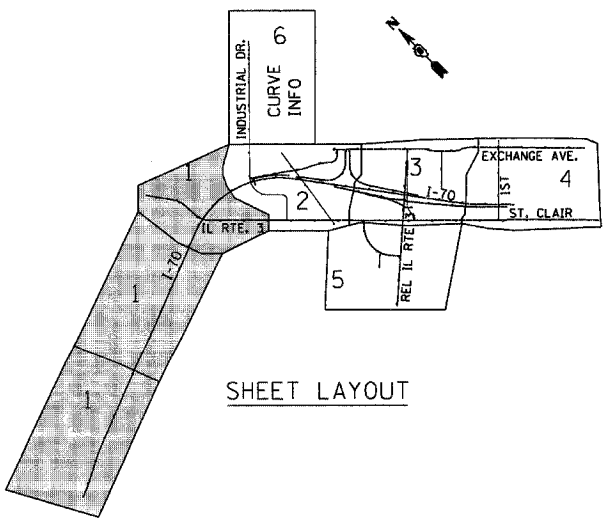
MATCH LINE STA. 91+00
SEE RIGHT

MATCH LINE STA.
120+00 SEE BOTTOM



STATION EQUATION
 ☉ PROPOSED I-70 126+73.45 =
 ☉ EX. IL ROUTE 3 149+08.35
 N = 14,047,448.70
 E = 2,449,655.39

MATCH LINE STA. 137+00
SEE SHEET 32



SHEET LAYOUT

NOTE:
CURVE INFORMATION IS LISTED
ON SHEET 36

FILE NAME = ... USER NAME = #USER# ... DESIGNED - JB ... REVISIONS ...
 DRAWN - JB ... CHECKED - ACL ... DATE - 10/21/11 ...
 PLOT SCALE = #SCALE# ... PLOT DATE = #DATE# ...
 TENG & ASSOCIATES, INC. ENGINEERS/ARCHITECTS/PLANNERS CHICAGO, ILLINOIS

STATE OF ILLINOIS
 DEPARTMENT OF TRANSPORTATION
 PROPOSED RELOCATED IL ROUTE 3 INTERCHANGE

ALIGNMENTS, TIES &
 BENCHMARKS 1

SCALE: 1"=100' SHEET NO. 1 OF 8 SHEETS STA. TO STA.

F.A.P. RTE.	SECTION	COUNTY	TOTAL SHEETS	SHEET NO.
998	82-2-1K	ST. CLAIR	353	31
CONTRACT NO. 76E06				
FED. ROAD DIST. NO. ILLINOIS FED. AID PROJECT				