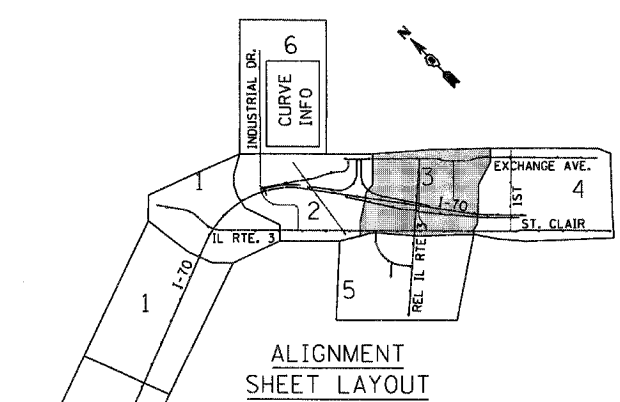
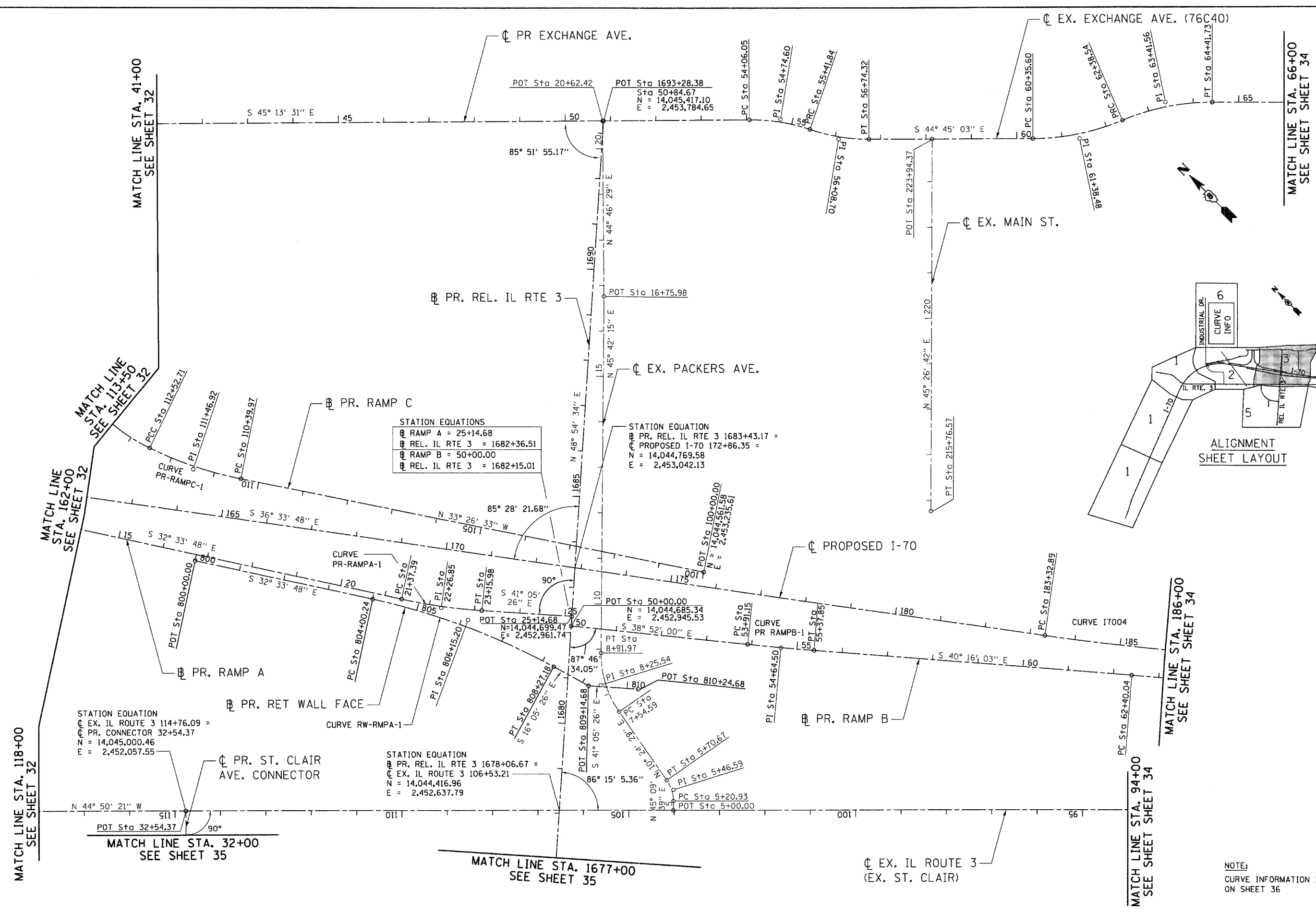


\DRCDNN-99-MOTIFL.DGN, \DRCDNN-11-ALIGNMENT\2.DGN, \DRCDNN-11-MOTIFL.DGN
 10-19-2011, 14:29:42, BONDHILL, \PFS-8044\KAWA\BULL.D-TRANS.07.2282\28668-001\CIVIL\CAD\99-ALL CONTRACTS\CONNSHEETS CONTRACT 11\DRCDNN-11-SHT-ALIGNMENT\62600.DGN



MATCH LINE STA. 118+00
SEE SHEET 32

MATCH LINE STA. 162+00
SEE SHEET 32

MATCH LINE STA. 41+00
SEE SHEET 32

MATCH LINE STA. 32+00
SEE SHEET 35

MATCH LINE STA. 1677+00
SEE SHEET 35

MATCH LINE STA. 94+00
SEE SHEET 34

MATCH LINE STA. 186+00
SEE SHEET 34

MATCH LINE STA. 66+00
SEE SHEET 34

NOTE:
CURVE INFORMATION IS LISTED
ON SHEET 36

FILE NAME =	USER NAME = #USER#	DESIGNED - JB	REVISED -	STATE OF ILLINOIS DEPARTMENT OF TRANSPORTATION PROPOSED RELOCATED IL ROUTE 3 INTERCHANGE	ALIGNMENTS, TIES & BENCHMARKS 3	F.A.P. RTE. 998	SECTION 82-2-1K	COUNTY ST. CLAIR	TOTAL SHEETS 353	SHEET NO. 33	
#FILEL#		DRAWN - JB	REVISED -			SCALE: 1"=100'	SHEET NO. 3 OF 8 SHEETS	STA. TO STA.	CONTRACT NO. 76E06		
		CHECKED - ACL	REVISED -			FED. ROAD DIST. NO. ILLINOIS FED. AID PROJECT					
		DATE - 10/21/11	REVISED -								

