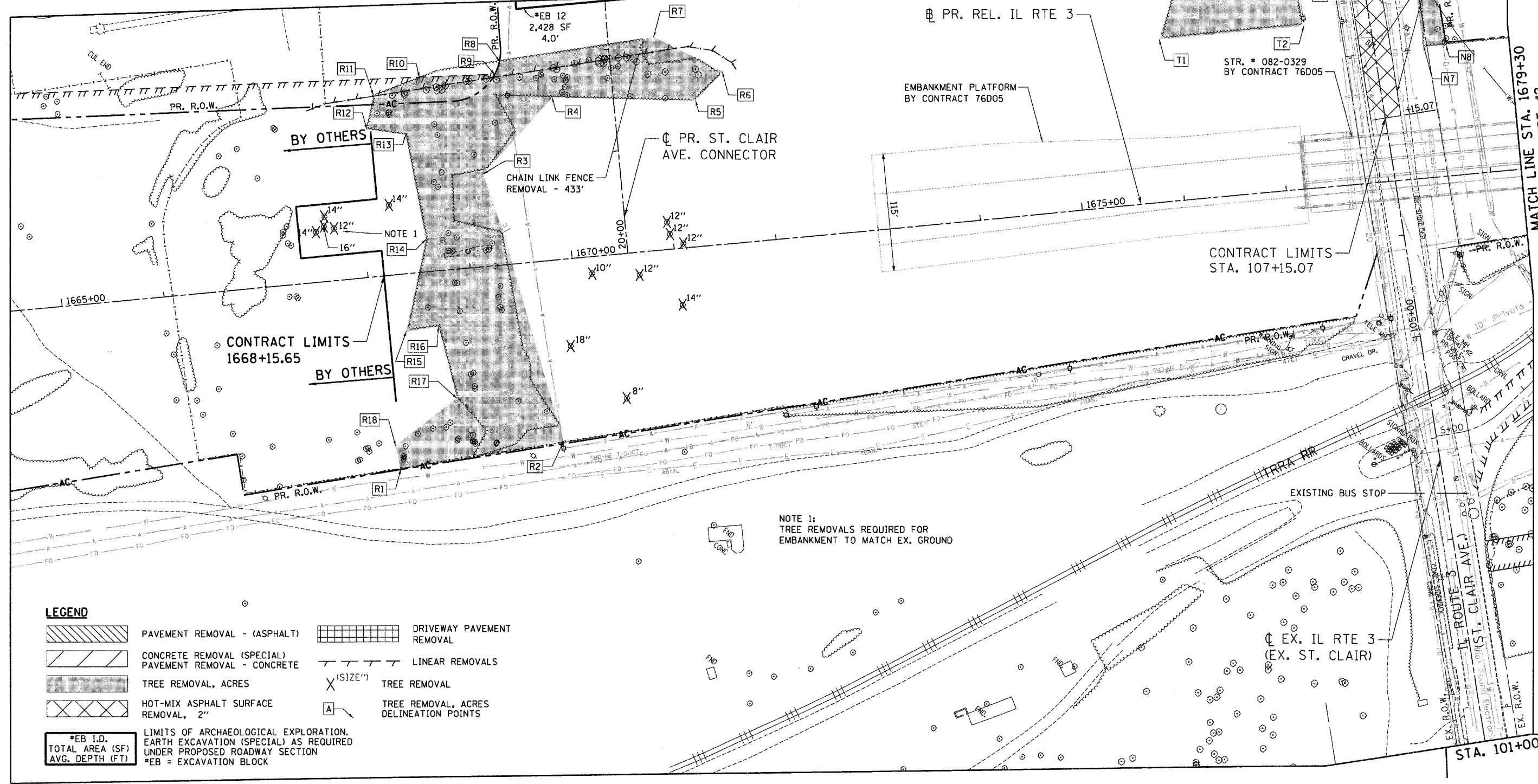


MATCH LINE STA. 109+00
SEE SHEET 46

MATCH LINE STA. 22+50
SEE SHEET 46

MATCH LINE STA. 1679+30
SEE SHEET 42



NOTE 1
TREE REMOVALS REQUIRED FOR
EMPAKMENT TO MATCH EX. GROUND

LEGEND

	PAVEMENT REMOVAL - (ASPHALT)		DRIVEWAY PAVEMENT REMOVAL
	CONCRETE REMOVAL (SPECIAL) PAVEMENT REMOVAL - CONCRETE		LINEAR REMOVALS
	TREE REMOVAL, ACRES	X (SIZE")	TREE REMOVAL
	HOT-MIX ASPHALT SURFACE REMOVAL, 2"	A	TREE REMOVAL, ACRES DELINEATION POINTS
	*EB I.D. TOTAL AREA (SF) AVG. DEPTH (FT)	LIMITS OF ARCHAEOLOGICAL EXPLORATION, EARTH EXCAVATION (SPECIAL) AS REQUIRED UNDER PROPOSED ROADWAY SECTION *EB = EXCAVATION BLOCK	

\\S:\044\AM\VAULT\CD\93 ALL CONTRACTS\CONNSHEETS.CONTRACT 11\URCONN-11-SHT-REMOVAL-1666A.DWG

FILE NAME =	USER NAME = #USER#	DESIGNED - JB	REVISED -	STATE OF ILLINOIS DEPARTMENT OF TRANSPORTATION PROPOSED RELOCATED IL ROUTE 3 INTERCHANGE	PROPOSED RELOCATED ILLINOIS ROUTE 3 EXISTING PLAN & REMOVALS STA. 1665+00 TO STA. 1679+30	F.A.P. RTE. 998	SECTION 82-2-1K	COUNTY ST. CLAIR	TOTAL SHEETS 353	SHEET NO. 47		
SCALE: 1"=50'	SHEET NO. 7 OF 7 SHEETS	STA.	TO STA.			CONTRACT NO. 76E06						
						FED. ROAD DIST. NO.	ILLINOIS FED. AID PROJECT					