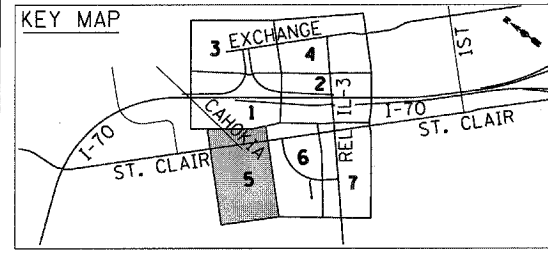
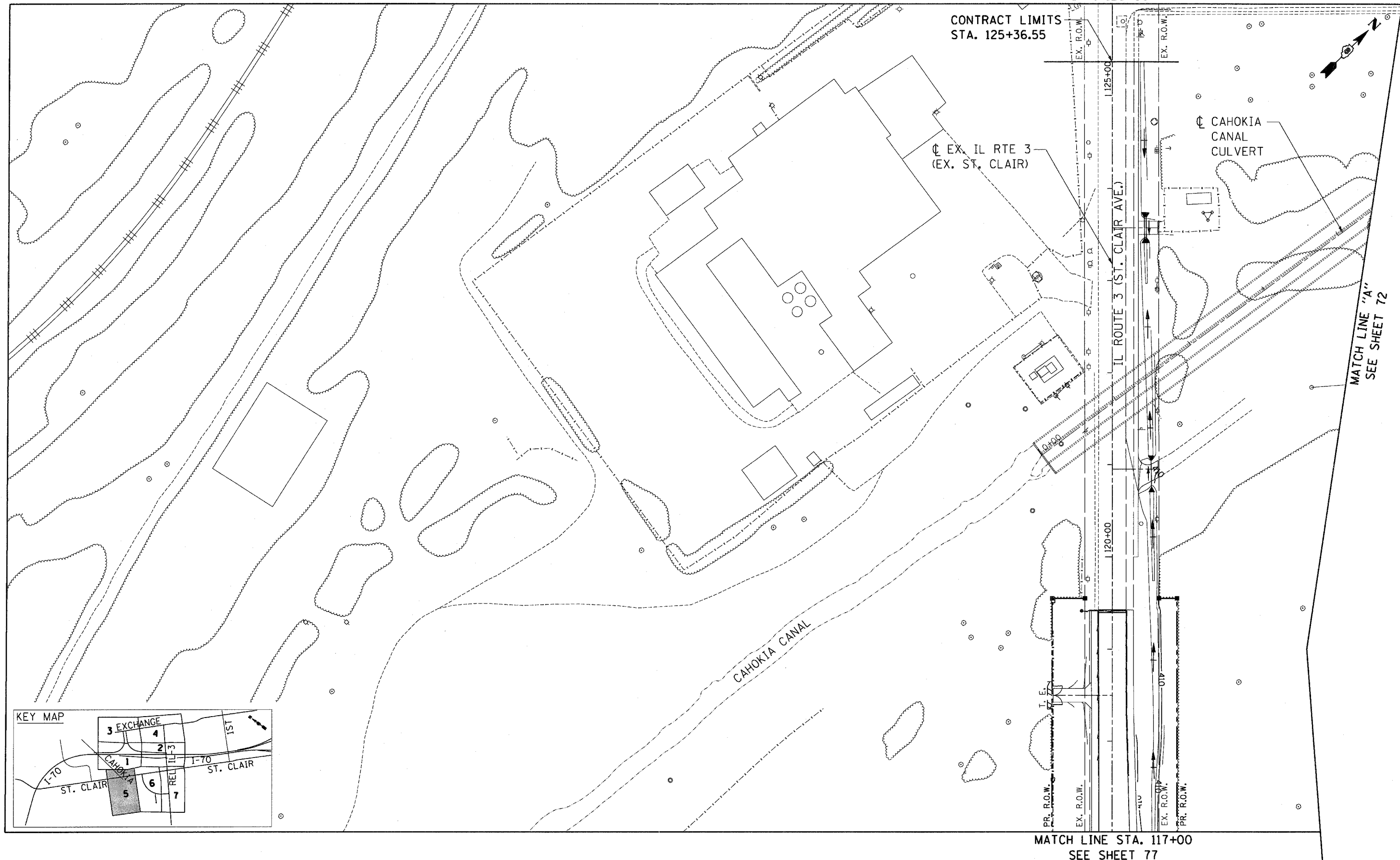


\DBCONN-99-MOTIF.LDN, \DBCONN-11-300BER.LDN, \DBCONN-11-MOTIF.LDN, \DBCONN-11-LEGND.LDN, \DBCONN-11-LAYOUT.LDN, \DBCONN-95-MOTIF.LDN, \DBCONN-96-MOTIF.LDN, \DBCONN-98-MOTIF.LDN, \DBCONN-10-MOTIF.LDN, \DBCONN-11-CONTOUR2.DGN
 11-04-2011 16:56:27
 \DBCONN-11-300BER.LDN, \DBCONN-11-MOTIF.LDN, \DBCONN-11-LEGND.LDN, \DBCONN-11-LAYOUT.LDN, \DBCONN-95-MOTIF.LDN, \DBCONN-96-MOTIF.LDN, \DBCONN-98-MOTIF.LDN, \DBCONN-10-MOTIF.LDN, \DBCONN-11-CONTOUR2.DGN
 \FS-0244\AMV\VALT.D-TRANS\7\2262\20868-001\CIVIL\CAU\99 ALL CONTRACTS\CONNSHEETS CONTRACT 11\DBCONN-11-SHT-1G1-11700.DGN



MATCH LINE STA. 117+00
 SEE SHEET 77

MATCH LINE "A"
 SEE SHEET 72

FILE NAME =	USER NAME = #USER#	DESIGNED - JB	REVISED -	STATE OF ILLINOIS DEPARTMENT OF TRANSPORTATION PROPOSED RELOCATED IL ROUTE 3 INTERCHANGE	EXISTING ST. CLAIR AVENUE GRADING PLAN STA. 117+00 TO 126+00		F.A.P. RTE.	SECTION	COUNTY	TOTAL SHEETS	SHEET NO.	
*FILE#		DRAWN - JB	REVISED -		SCALE: 1"=50'	SHEET NO. 5 OF 7 SHEETS	STA. 117+00 TO STA. 126+00	998	82-2-1K	ST. CLAIR	353	76
PLOT SCALE = #SCALE#		CHECKED - ACL	REVISED -					CONTRACT NO. 76E06				
PLOT DATE = #DATE#		DATE - 10/21/11	REVISED -					ILLINOIS FED. AID PROJECT				

