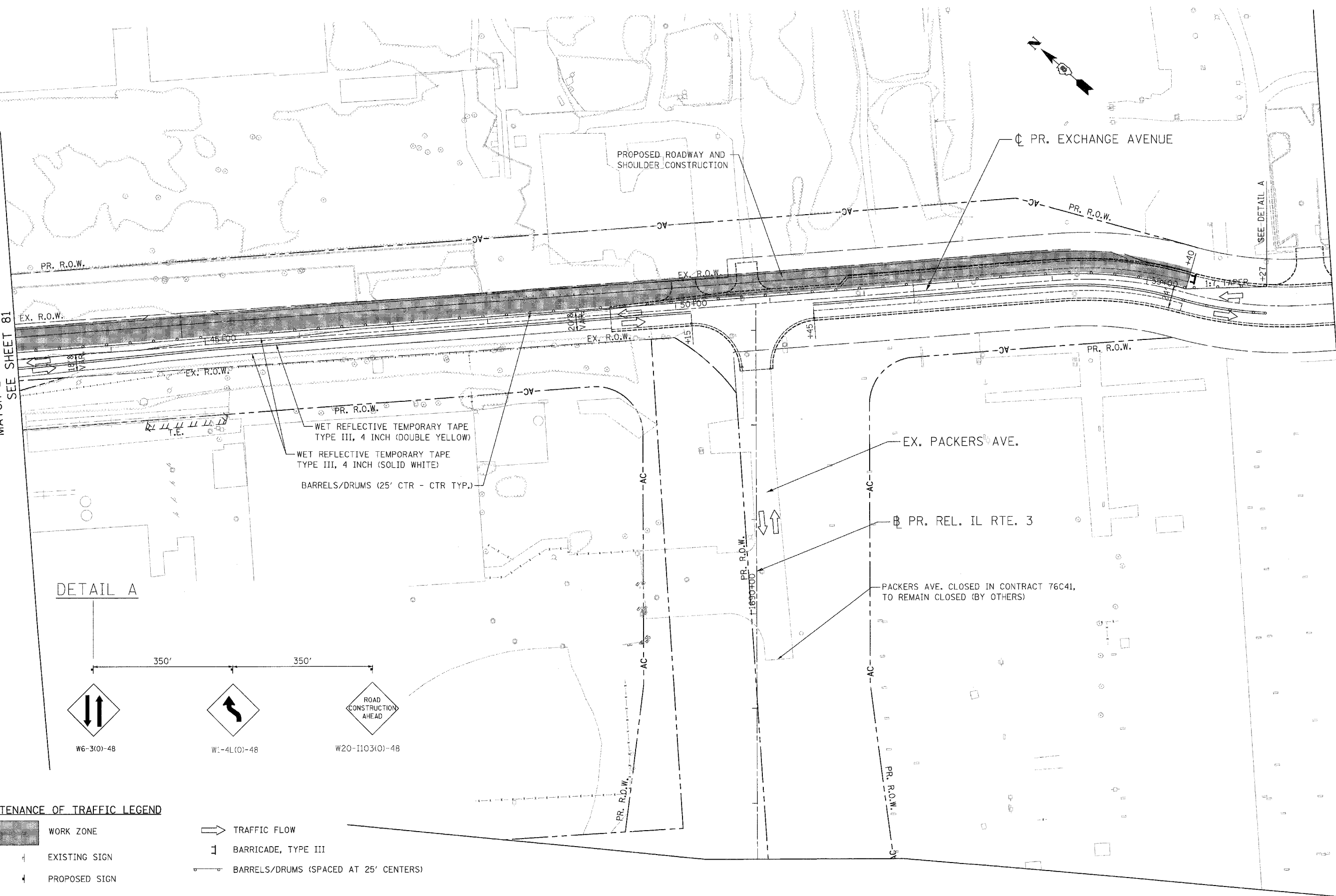
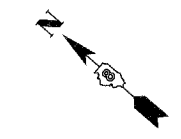
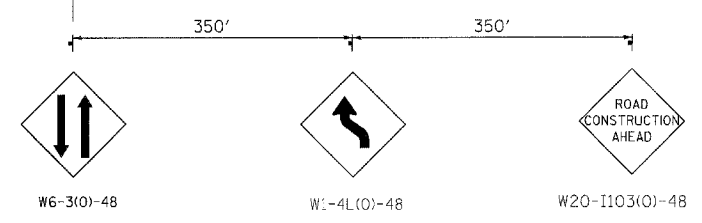


MATCH LINE STA. 43+00  
SEE SHEET 81



WET REFLECTIVE TEMPORARY TAPE  
TYPE III, 4 INCH (DOUBLE YELLOW)  
WET REFLECTIVE TEMPORARY TAPE  
TYPE III, 4 INCH (SOLID WHITE)  
BARRELS/DRUMS (25' CTR - CTR TYP.)

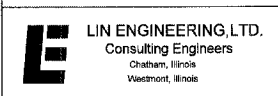
DETAIL A



**MAINTENANCE OF TRAFFIC LEGEND**

- WORK ZONE
- TRAFFIC FLOW
- BARRICADE, TYPE III
- EXISTING SIGN
- PROPOSED SIGN
- BARRELS/DRUMS (SPACED AT 25' CENTERS)

484646.dwg, last revision: 10/21/11, 10:17:20 AM, \$\$\$\$\$\$  
 484646.dwg, last revision: 10/21/11, 10:17:20 AM, \$\$\$\$\$\$



USER NAME = Plotted by Scott Wilkinson	DESIGNED - SEW	REVISED -
DRAWN - RK	REVISOR -	REVISION -
CHECKED - ST	DATE - 10/21/11	REVISION -
PLOT SCALE = 50,000 / IN.		
PLOT DATE = 10/17/2011		

**STATE OF ILLINOIS**  
**DEPARTMENT OF TRANSPORTATION**  
 PROPOSED RELOCATED ILLINOIS ROUTE 3 INTERCHANGE

**PR. EXCHANGE AVE. AND PR. REL. IL RTE. 3**  
**MAINTENANCE OF TRAFFIC - STAGE 1**  
**STA. 43+00 TO STA. 57+00**

SCALE: 1"=50'    SHEET NO. 3 OF 15 SHEETS    STA.    TO STA.

F.A.P. RTE.	SECTION	COUNTY	TOTAL SHEETS	SHEET NO.
998	82-2-1K	ST. CLAIR	353	82
FED. ROAD DIST. NO.			ILLINOIS FED. AID PROJECT	

CONTRACT NO. 76E06