

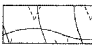

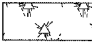
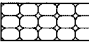
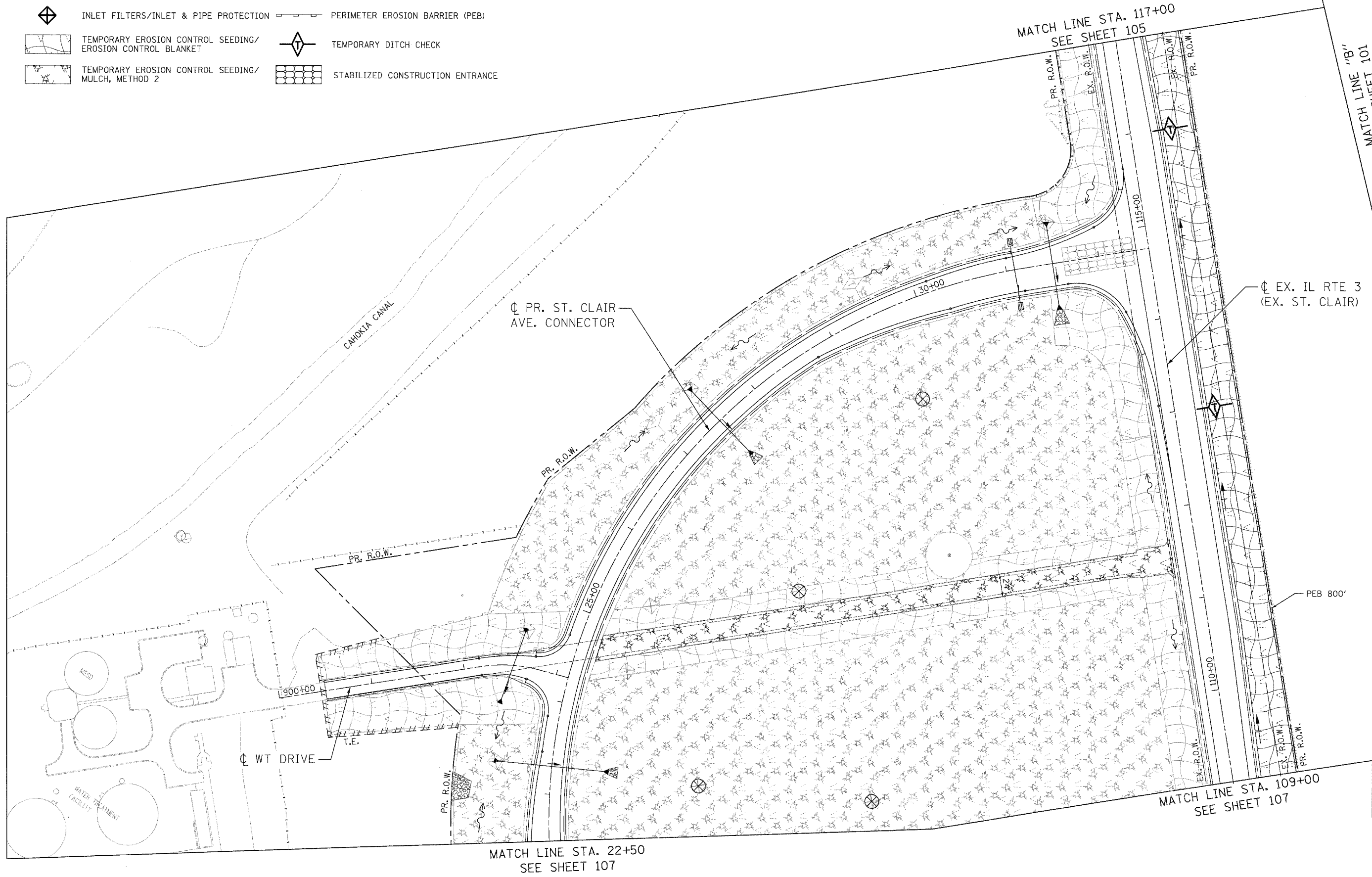


EROSION CONTROL LEGEND

-  INLET FILTERS/INLET & PIPE PROTECTION
-  PERIMETER EROSION BARRIER (PEB)
-  TEMPORARY EROSION CONTROL SEEDING/  
EROSION CONTROL BLANKET
-  TEMPORARY DITCH CHECK
-  TEMPORARY EROSION CONTROL SEEDING/  
MULCH, METHOD 2
-  STABILIZED CONSTRUCTION ENTRANCE



MATCH LINE STA. 117+00  
SEE SHEET 105

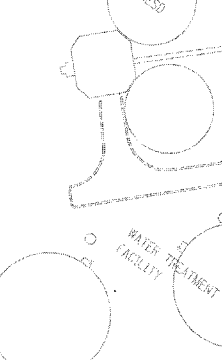
MATCH LINE "B"  
SEE SHEET 101

PR. ST. CLAIR  
AVE. CONNECTOR

EX. IL RTE 3  
(EX. ST. CLAIR)

MATCH LINE "C"  
SEE SHEET 102

WT DRIVE



PEB 800'

MATCH LINE STA. 109+00  
SEE SHEET 107

MATCH LINE STA. 22+50  
SEE SHEET 107

9999ref\_linet\_name00000  
 999999ref\_cms00000  
 999999ref\_99  
 999999ref\_99

**LIN ENGINEERING LTD.**  
 Consulting Engineers  
 Chatham, Illinois  
 Westmont, Illinois

USER NAME = Plotted by Scott Wilkinson	DESIGNED - AS	REVISED -
DRAWN - AS	CHECKED - ST	REVISED -
PLOT SCALE = 50,0000' / IN.	DATE = 10/21/11	REVISED -
PLOT DATE = 10/17/2011		

STATE OF ILLINOIS
DEPARTMENT OF TRANSPORTATION
PROPOSED RELOCATED ILLINOIS ROUTE 3 INTERCHANGE

**PR. ST. CLAIR AVE. CONNECTOR AND EX. IL RTE. 3 (ST. CLAIR AVE.)**  
**EROSION CONTROL PLANS - STAGE 2**  
**STA. 109+00 TO STA. 117+00**

SCALE: 1"=50' SHEET NO. 11 OF 13 SHEETS STA. TO STA.

F.A.P. RTE.	SECTION	COUNTY	TOTAL SHEETS	SHEET NO.
998	82-2-1K	ST. CLAIR	353	106
				CONTRACT NO. 76E06
FED. ROAD DIST. NO.				ILLINOIS FED. AID PROJECT