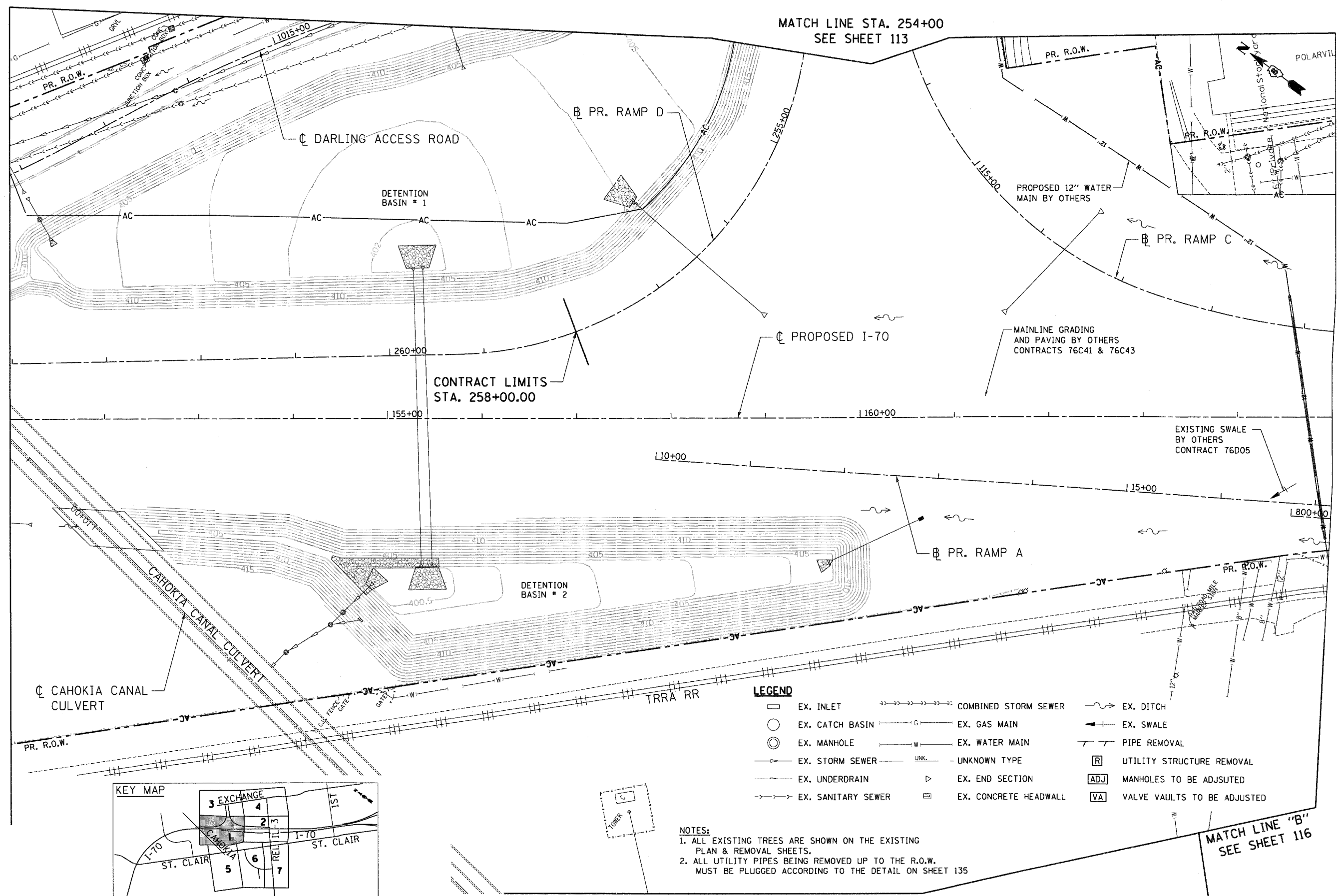


.\\BDCDNN-99-MOTIF.LDGN, .\\BDCDNN-11-LEGEND.LDGN, .\\BDCDNN-11-LAYOUT.LDGN, .\\BDCDNN-96-MOTIF.LDGN, .\\BDCDNN-10-MOTIF.LDGN, .\\BDCDNN-06-DRAIN.LDGN, .\\BDCDNN-06-CONT.DRP.LDGN
 .\\BDCDNN-11-1502530
 .\\FS-2044\\AM VALL.D-TRNGE.07.2282.28888.081.CIVIL\\090939 ALL CONTRACTS\\CDNN\\SHEETS CONTRACT 11\\BDCDNN-11-SHT-DRN\\112-1502530.DGN

STA. 151+00

MATCH LINE STA. 254+00
SEE SHEET 113

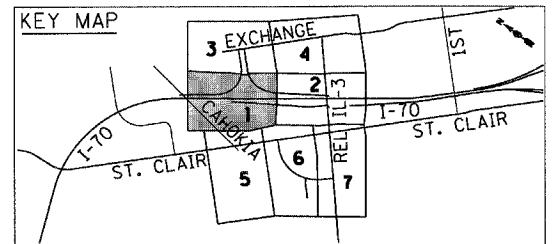
MATCH LINE STA. 165+00
SEE SHEET 112



LEGEND

- EX. INLET
- EX. CATCH BASIN
- ⊙ EX. MANHOLE
- EX. STORM SEWER
- EX. UNDERDRAIN
- EX. SANITARY SEWER
- COMBINED STORM SEWER
- EX. GAS MAIN
- EX. WATER MAIN
- UNKNOWN TYPE
- ▷ EX. END SECTION
- ▢ EX. CONCRETE HEADWALL
- EX. DITCH
- EX. SWALE
- PIPE REMOVAL
- UTILITY STRUCTURE REMOVAL
- ADJ MANHOLES TO BE ADJUSTED
- VA VALVE VAULTS TO BE ADJUSTED

- NOTES:**
- ALL EXISTING TREES ARE SHOWN ON THE EXISTING PLAN & REMOVAL SHEETS.
 - ALL UTILITY PIPES BEING REMOVED UP TO THE R.O.W. MUST BE PLUGGED ACCORDING TO THE DETAIL ON SHEET 135



MATCH LINE "A" SEE SHEET 115

MATCH LINE "B" SEE SHEET 116

FILE NAME = #FILEL#	USER NAME = #USER#	DESIGNED - JB DRAWN - JB CHECKED - ACL DATE - 10/21/11	REVISED - REVISED - REVISED - REVISED -	STATE OF ILLINOIS DEPARTMENT OF TRANSPORTATION PROPOSED RELOCATED IL ROUTE 3 INTERCHANGE	PROPOSED I-70 EXISTING DRAINAGE & UTILITIES STA. 151+00 TO STA. 165+00	F.A.P. RTE. 998 SECTION 82-2-1K COUNTY ST. CLAIR TOTAL SHEETS 353 SHEET NO. 111 CONTRACT NO. 76E06
TENG & ASSOCIATES, INC. ENGINEERS/ARCHITECTS/PLANNERS CHICAGO, ILLINOIS				SCALE: 1"=50' SHEET NO. 1 OF 7 SHEETS STA. TO STA.		FED. ROAD DIST. NO. ILLINOIS FED. AID PROJECT