

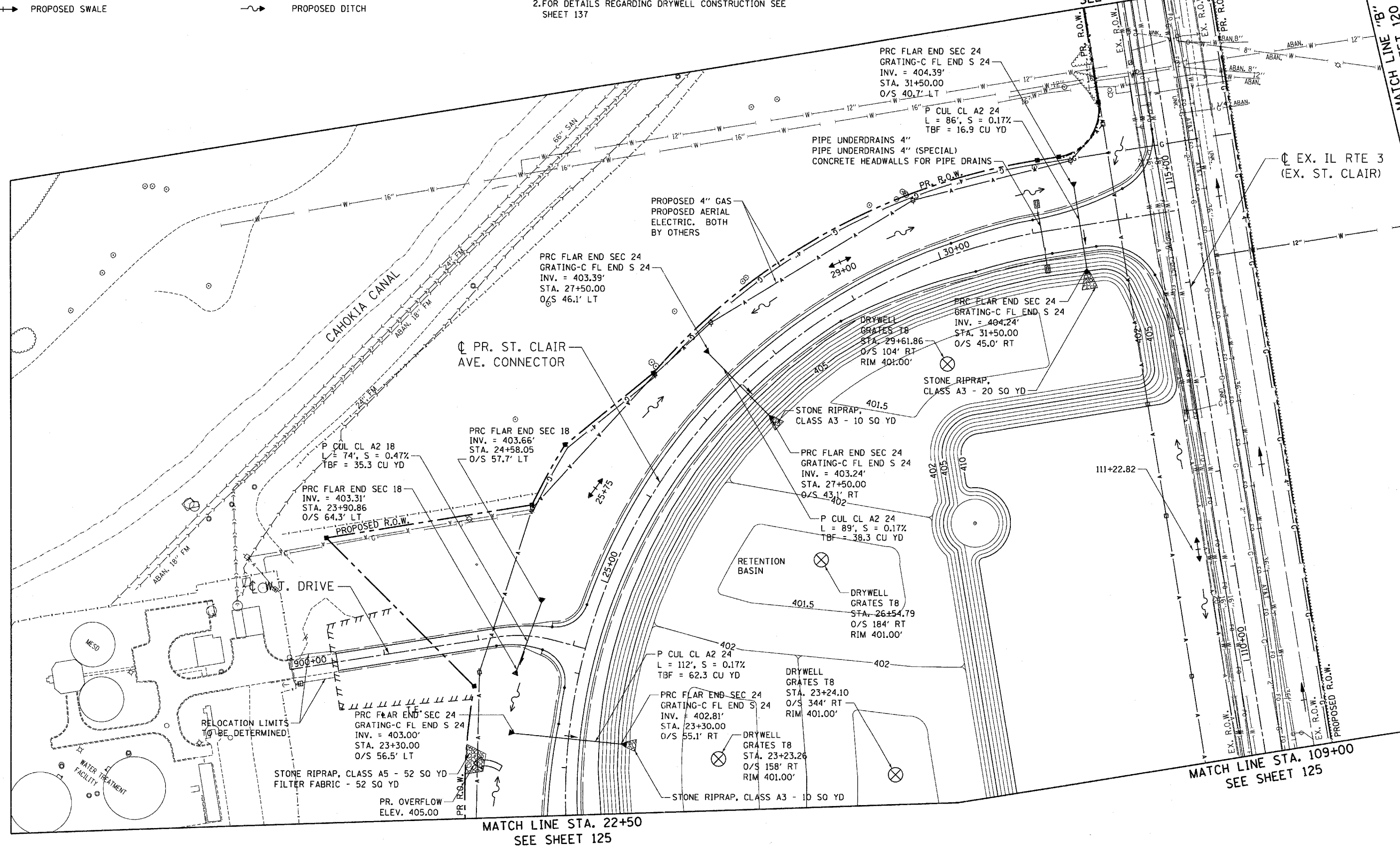
- LEGEND**
- PROPOSED INLET
  - ⊕ PROPOSED DRYWELL
  - PROPOSED MANHOLE
  - PROPOSED CATCH BASIN
  - ▶ PROPOSED CULVERT END SECTION
  - PROPOSED SWALE
  - ↪ PROPOSED OVERFLOW
  - PROPOSED STORM SEWER
  - PROPOSED UNDERDRAIN
  - ▭ PROPOSED HEADWALL
  - ↔ PROPOSED DITCH SUMMIT
  - ~ PROPOSED DITCH

**NOTES:**  
 1. FOR STATION, OFFSET, AND RIM ELEVATION DETAILS OF ALL DRAINAGE STRUCTURES, SEE SHEET 136  
 2. FOR DETAILS REGARDING DRYWELL CONSTRUCTION SEE SHEET 137

MATCH LINE STA. 117+00  
 SEE SHEET 123

MATCH LINE "B"  
 SEE SHEET 120

MATCH LINE "C"  
 SEE SHEET 120



MATCH LINE STA. 22+50  
 SEE SHEET 125

MATCH LINE STA. 109+00  
 SEE SHEET 125

\BDCONN-09-MOTIFL.DGN, \BDCONN-11-BORDERL.DGN, \BDCONN-11-LEGENDL.DGN, \BDCONN-11-LAYOUTL.DGN, \BDCONN-06-MOTIFL.DGN, \BDCONN-08-MOTIFL.DGN, \BDCONN-11-18780.DGN  
 11-04-2011, 16:56:20  
 BONDHJJD \NFS-0844\NVA\VALTJD-TRANS.9712282.20868-021\CIVIL\CAD\19 ALL CONTRACTS\CONNSHEETS CONTRACT 11\BDCONN-11-SHT-DRNUTL1-18780.DGN

FILE NAME =	USER NAME = #USER#	DESIGNED - JB	REVISED -	<b>STATE OF ILLINOIS</b> <b>DEPARTMENT OF TRANSPORTATION</b> PROPOSED RELOCATED IL ROUTE 3 INTERCHANGE	<b>PROPOSED CONNECTOR ROAD AND EXISTING ST. CLAIR AVENUE</b> <b>PROPOSED DRAINAGE &amp; UTILITIES</b> STA. 109+00 TO STA. 117+00	F.A.P. RITE. 998	SECTION 82-2-1K	COUNTY ST. CLAIR	TOTAL SHEETS 353	SHEET NO. 124	
#FILEL#	PLOT SCALE = #SCALE#	DRAWN - JB	REVISED -			SCALE: 1"=50'	SHEET NO. 7 OF 8 SHEETS	STA.	TO STA.	FED. ROAD DIST. NO.	ILLINOIS FED. AID PROJECT
PLOT DATE = #DATE#		CHECKED - ACL	REVISED -			CONTRACT NO. 76E06					
		DATE - 10/21/11	REVISED -								

