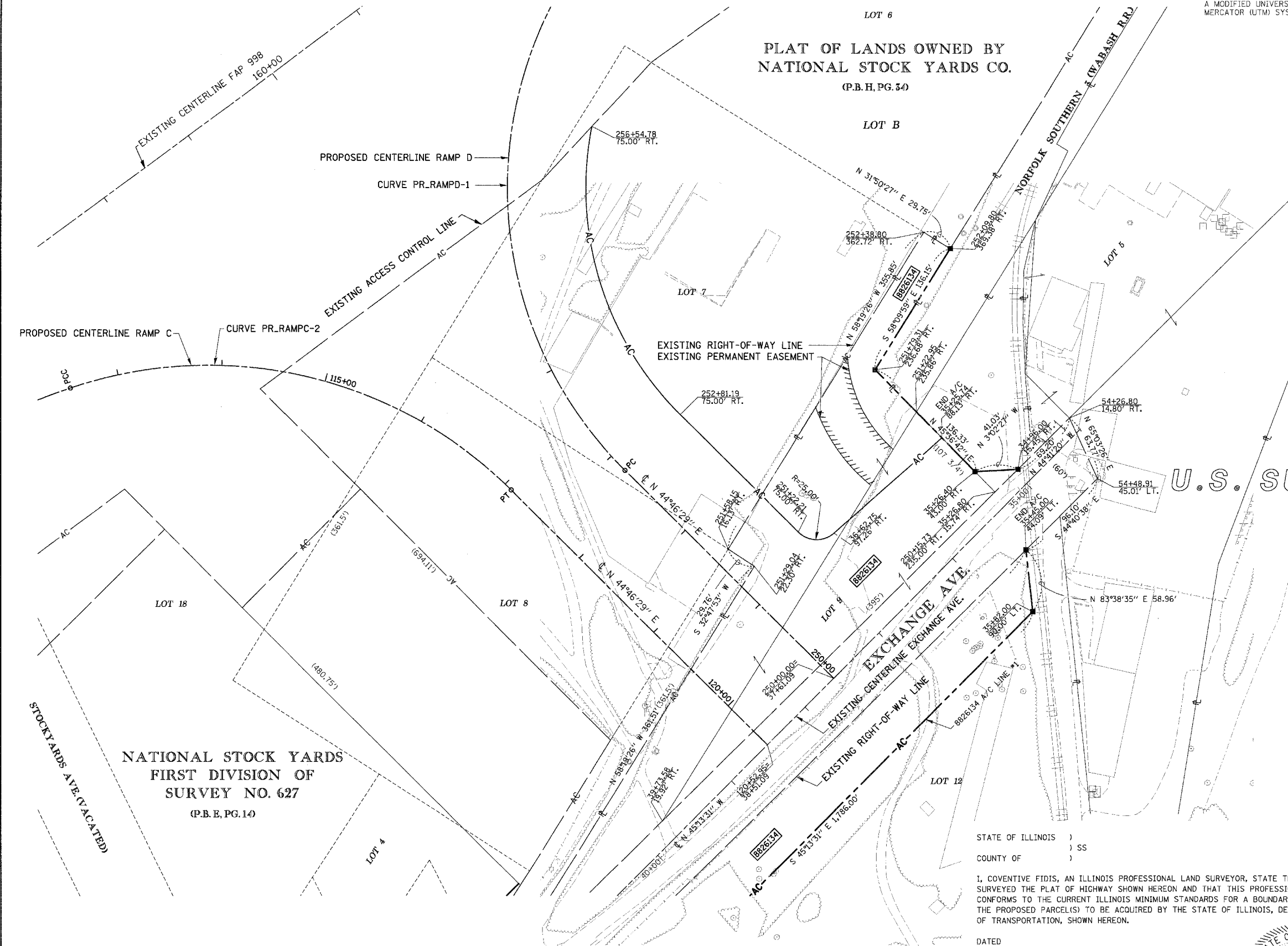
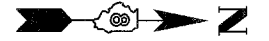


PART OF U.S. SURVEY 627, T2N, R10W, OF THE 3RD PM, ST. CLAIR COUNTY, ILLINOIS

SEE COORDINATE LIST AND BASIS OF COORDINATES AND BEARINGS STATEMENT ON SHEET 2

BEARINGS SHOWN HEREON ARE BASED ON THE MISSISSIPPI RIVER CROSSING (MRC) COORDINATE SYSTEM WHICH IS A MODIFIED UNIVERSAL TRANSVERSE MERCATOR (UTM) SYSTEM, ZONE 15 NORTH.

SPACE RESERVED FOR RECORDING OFFICER



PROP. CURVE PR\_RAMPC-2  
 PI STA. = 115+07.02  
 $\Delta = 63^{\circ}37'12''$  (RT)  
 D = 13<sup>58</sup>28"  
 R = 410.00'  
 T = 254.31'  
 L = 455.25'  
 E = 72.47'  
 P.C. STA. = 112+52.71  
 P.T. STA. = 117+07.96

PROP. CURVE PR\_RAMPD-1  
 PI STA. = 257+14.62  
 $\Delta = 97^{\circ}30'58''$  (RT)  
 D = 15<sup>04</sup>40"  
 R = 380.00'  
 T = 433.43'  
 L = 646.75'  
 E = 196.42'  
 P.C. STA. = 252+81.19  
 P.T. STA. = 259+27.94

U.S. SURVEY 627

NATIONAL STOCK YARDS  
 FIRST DIVISION OF  
 SURVEY NO. 627  
 (P.B.E, PG.14)

NATIONAL STOCK YARDS  
 FIRST DIVISION OF  
 SURVEY NO. 627  
 (P.B.E, PG.14)

STATE OF ILLINOIS )  
 ) SS  
 COUNTY OF )

I, COVENTINE FIDIS, AN ILLINOIS PROFESSIONAL LAND SURVEYOR, STATE THAT I HAVE SURVEYED THE PLAT OF HIGHWAY SHOWN HEREON AND THAT THIS PROFESSIONAL SERVICE CONFORMS TO THE CURRENT ILLINOIS MINIMUM STANDARDS FOR A BOUNDARY SURVEY FOR THE PROPOSED PARCEL(S) TO BE ACQUIRED BY THE STATE OF ILLINOIS, DEPARTMENT OF TRANSPORTATION, SHOWN HEREON.

DATED \_\_\_\_\_  
 COVENTINE FIDIS, PLS NO. 35-2159  
 LICENSE EXPIRATION DATE: 11/30/2012



ILLINOIS DEPARTMENT OF TRANSPORTATION  
 PLAT OF HIGHWAYS  
 FAP ROUTE 998  
 SECTION 82-2-1K  
 ST. CLAIR COUNTY  
 JOB NO. R-98-026-08  
 STATION 21+00 TO STATION 30+00

SCALE: 1" = 50'

SHEET 5 OF

F.A. RTE.	SECTION	COUNTY	TOTAL SHEETS	SHEET NO.
			353	172

CONTRACT NO. \_\_\_\_\_

FED. ROAD DIST. NO. \_\_\_\_\_ ILLINOIS FED. AID PROJECT \_\_\_\_\_

COMPLETION DATE OF FIELD WORK PERFORMED	
LAND SURVEY:	ROW STAKING: