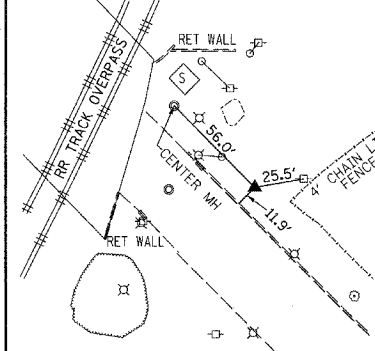
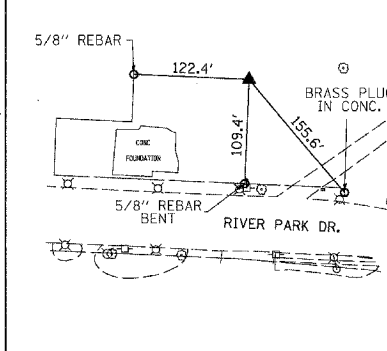


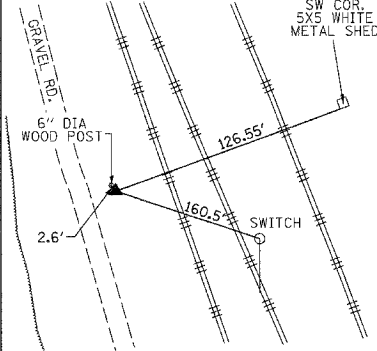
CONTROL POINT \*7695 60D NAIL  
N 14039433.2044 E 2450314.6062



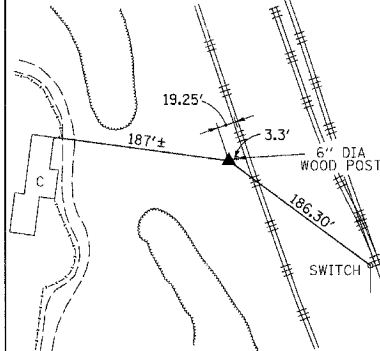
CONTROL POINT \*7697 5/8" REBAR  
N 14039855.2387 E 2449709.7110



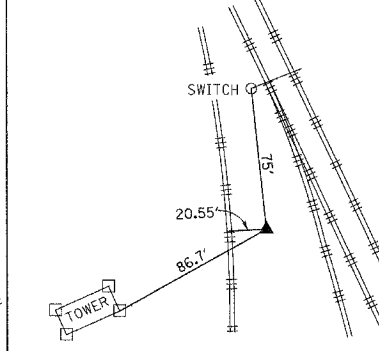
CONTROL POINT \*4334 IDOT MON. DISK B-11  
N 14044073.0067 E 2450305.0227



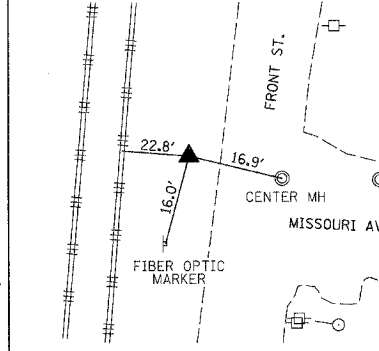
CONTROL POINT \*4335 IDOT MON. DISK B-13  
N 14045448.6859 E 2449734.9971



CONTROL POINT \*4338 5/8" REBAR  
N 14048121.3343 E 2448662.4590

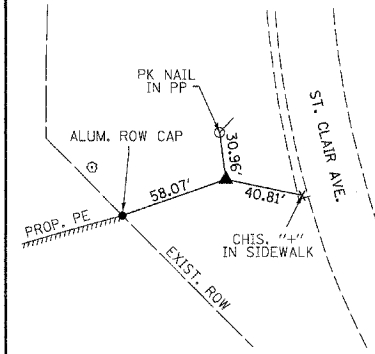


CONTROL POINT \*4340 5/8" REBAR  
N 14041177.8321 E 2447367.2451



SPACE RESERVED FOR RECORDING OFFICER

CONTROL POINT \*20528 5/8" REBAR  
N 14047536.3420 E 2449565.0650



109169/97258

ILLINOIS DEPARTMENT OF TRANSPORTATION DIVISION OF HIGHWAYS/REGION 5/DISTRICT 8 1102 EASTPORT PLAZA DRIVE COLLINSVILLE, ILLINOIS 62234-6198				
F.A. RTE.	SECTION	COUNTY	TOTAL SHEETS	SHEET NO.
			353	174
CONTRACT NO.				
FED. ROAD DIST. NO. ILLINOIS FED. AID PROJECT				