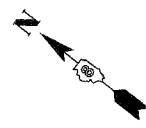
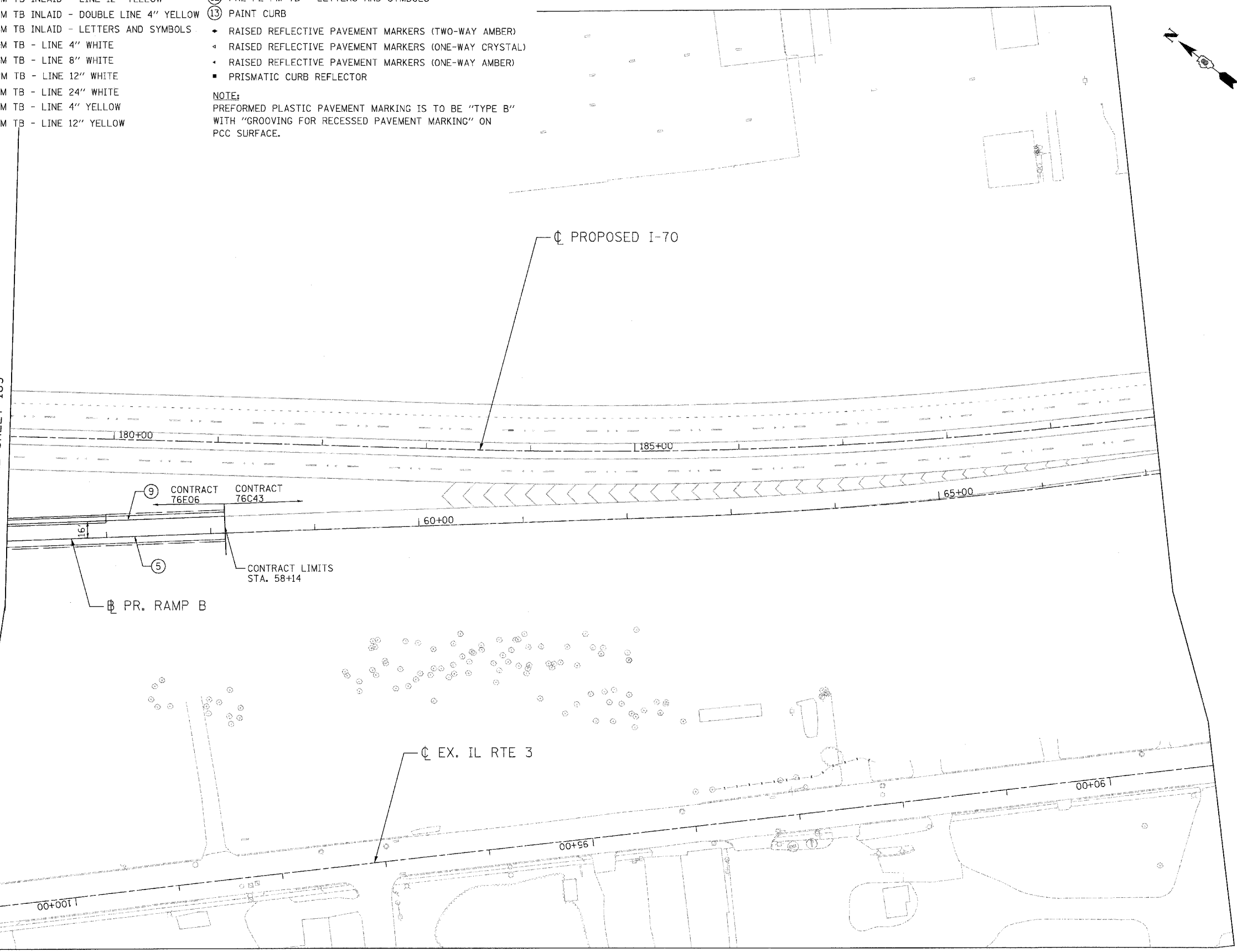


PAVEMENT MARKING LEGEND

- ① PRE PL PM TB INLAID - LINE 4" WHITE
 - ② PRE PL PM TB INLAID - LINE 12" YELLOW
 - ③ PRE PL PM TB INLAID - DOUBLE LINE 4" YELLOW
 - ④ PRE PL PM TB INLAID - LETTERS AND SYMBOLS
 - ⑤ PRE PL PM TB - LINE 4" WHITE
 - ⑥ PRE PL PM TB - LINE 8" WHITE
 - ⑦ PRE PL PM TB - LINE 12" WHITE
 - ⑧ PRE PL PM TB - LINE 24" WHITE
 - ⑨ PRE PL PM TB - LINE 4" YELLOW
 - ⑩ PRE PL PM TB - LINE 12" YELLOW
 - ⑪ PRE PL PM TB - DOUBLE LINE 4" YELLOW
 - ⑫ PRE PL PM TB - LETTERS AND SYMBOLS
 - ⑬ PAINT CURB
- ◆ RAISED REFLECTIVE PAVEMENT MARKERS (TWO-WAY AMBER)
 - ◆ RAISED REFLECTIVE PAVEMENT MARKERS (ONE-WAY CRYSTAL)
 - ◆ RAISED REFLECTIVE PAVEMENT MARKERS (ONE-WAY AMBER)
 - PRISMATIC CURB REFLECTOR
- NOTE:**
 PREFORMED PLASTIC PAVEMENT MARKING IS TO BE "TYPE B" WITH "GROOVING FOR RECESSED PAVEMENT MARKING" ON PCC SURFACE.



MATCH LINE STA. 179+00
SEE SHEET 189



MATCH LINE
STA. 101+00
SEE SHEET 195

*****ref_list_name*****
*****date_time*****

LIN ENGINEERING, LTD.
 Consulting Engineers
 Chatham, Illinois
 Westmont, Illinois

USER NAME = Plotted by Scott Wilkinson	DESIGNED - AS	REVISED -
PLOT SCALE = 50,0000' / IN.	DRAWN - AS	REVISED -
PLOT DATE = 10/17/2011	CHECKED - ST	REVISED -
	DATE - 10/21/11	REVISED -

**STATE OF ILLINOIS
 DEPARTMENT OF TRANSPORTATION**
 PROPOSED RELOCATED ILLINOIS ROUTE 3 INTERCHANGE

RAMP B PAVEMENT MARKING PLANS STA. 56+05 TO STA. 58+14		
SCALE: 1"=50'	SHEET NO. 3 OF 8 SHEETS	STA. TO STA.

F.A.P. RTE. 998	SECTION 82-2-1K	COUNTY ST. CLAIR	TOTAL SHEETS 353	SHEET NO. 190
FED. ROAD DIST. NO. ILLINOIS FED. AID PROJECT			CONTRACT NO. 76E06	