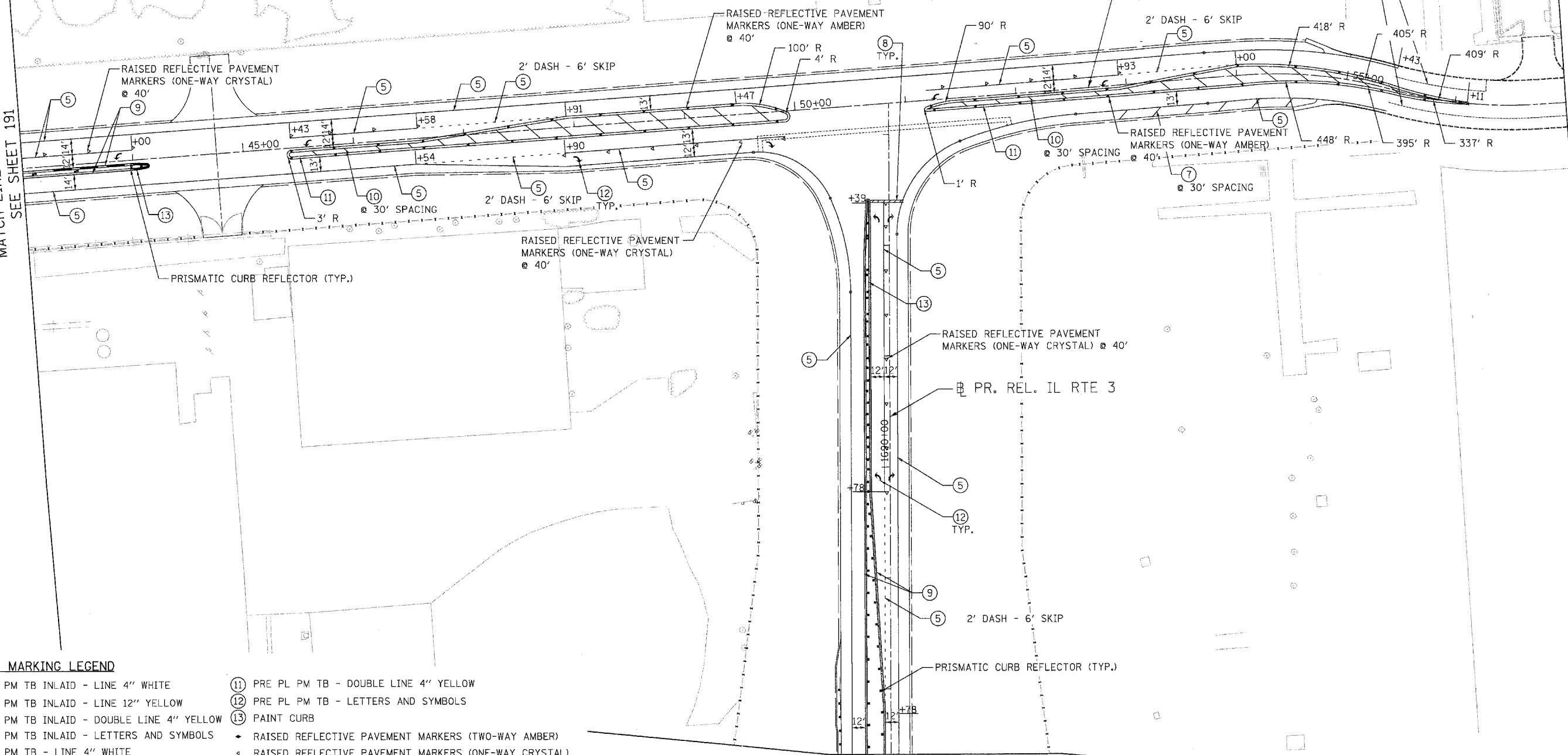


MATCH LINE STA. 43+00
SEE SHEET 191

EXISTING PAVEMENT MARKING
TO BE REMOVED TO MAIN STREET;
NO PARKING IS PERMITTED
BETWEEN PR. REL. IL RTE 3 AND
MAIN ST.

PR. EXCHANGE AVENUE



PAVEMENT MARKING LEGEND

- ① PRE PL PM TB INLAID - LINE 4" WHITE
- ② PRE PL PM TB INLAID - LINE 12" YELLOW
- ③ PRE PL PM TB INLAID - DOUBLE LINE 4" YELLOW
- ④ PRE PL PM TB INLAID - LETTERS AND SYMBOLS
- ⑤ PRE PL PM TB - LINE 4" WHITE
- ⑥ PRE PL PM TB - LINE 8" WHITE
- ⑦ PRE PL PM TB - LINE 12" WHITE
- ⑧ PRE PL PM TB - LINE 24" WHITE
- ⑨ PRE PL PM TB - LINE 4" YELLOW
- ⑩ PRE PL PM TB - LINE 12" YELLOW
- ⑪ PRE PL PM TB - DOUBLE LINE 4" YELLOW
- ⑫ PRE PL PM TB - LETTERS AND SYMBOLS
- ⑬ PAINT CURB
- ◆ RAISED REFLECTIVE PAVEMENT MARKERS (TWO-WAY AMBER)
- ◀ RAISED REFLECTIVE PAVEMENT MARKERS (ONE-WAY CRYSTAL)
- ◄ RAISED REFLECTIVE PAVEMENT MARKERS (ONE-WAY AMBER)
- PRISMATIC CURB REFLECTOR

NOTE:
PREFORMED PLASTIC PAVEMENT MARKING IS TO BE "TYPE B"
WITH "GROOVING FOR RECESSED PAVEMENT MARKING" ON
PCC SURFACE.

MATCH LINE STA. 1687+40
SEE SHEET 189



USER NAME = Plotted by Scott Wilkinson	DESIGNED - AS	REVISED -
PLOT SCALE = 50.0000' / IN.	DRAWN - AS	REVISED -
PLOT DATE = 10/17/2011	CHECKED - ST	REVISED -
	DATE - 10/21/11	REVISED -

STATE OF ILLINOIS
DEPARTMENT OF TRANSPORTATION
PROPOSED RELOCATED ILLINOIS ROUTE 3 INTERCHANGE

PR. EXCHANGE AVE. AND PR. REL. IL RTE. 3
PAVEMENT MARKING PLANS
STA. 43+00 TO STA. 57+00

F.A.P. RTE. 998	SECTION 82-2-1K	COUNTY ST. CLAIR	TOTAL SHEETS 353	SHEET NO. 192
FED. ROAD DIST. NO. ILLINOIS FED. AID PROJECT			CONTRACT NO. 76E06	

SCALE: 1"=50' SHEET NO. 5 OF 8 SHEETS STA. TO STA.