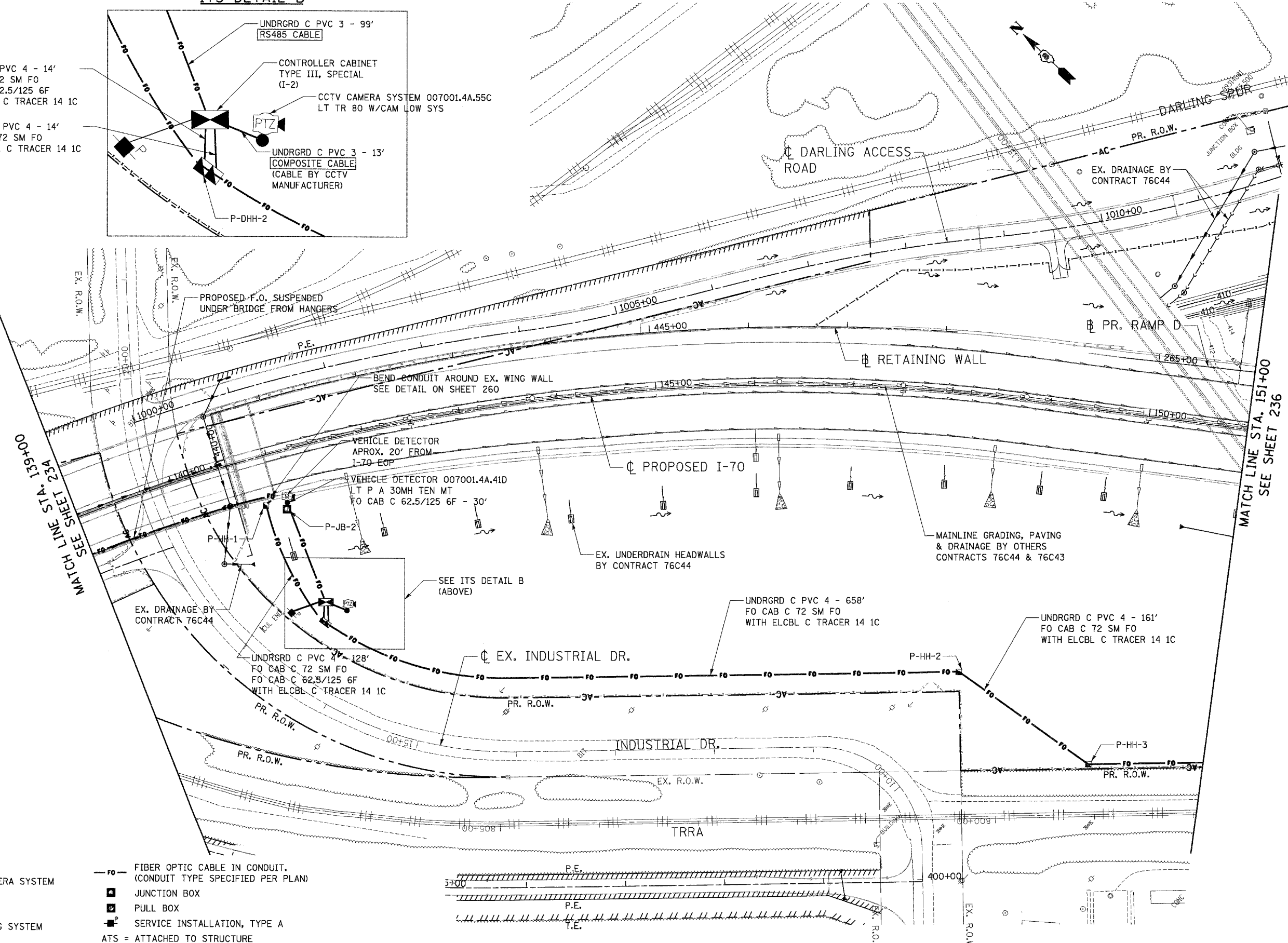
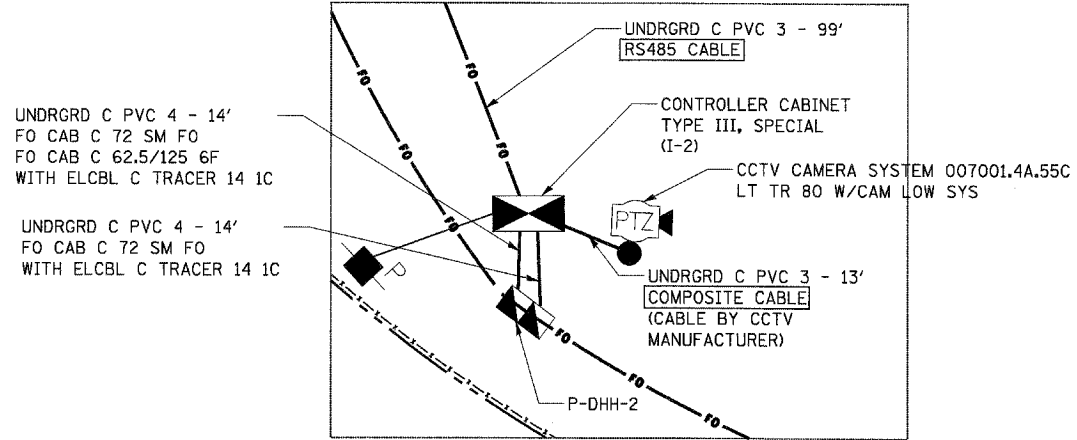


**ITS DETAIL B**



MATCH LINE STA. 139+00 SEE SHEET 234

MATCH LINE STA. 151+00 SEE SHEET 236

**LEGEND**

- POLE MOUNTED CCTV CAMERA SYSTEM
- HANDHOLE
- DOUBLE HANDHOLE
- RADAR VEHICLE DETECTING SYSTEM
- CONTROLLER CABINET
- FIBER OPTIC CABLE IN CONDUIT. (CONDUIT TYPE SPECIFIED PER PLAN)
- JUNCTION BOX
- PULL BOX
- SERVICE INSTALLATION, TYPE A
- ATS = ATTACHED TO STRUCTURE

FILE NAME =  
#FILE#

**TENG** & ASSOCIATES, INC.  
ENGINEERS/ARCHITECTS/PLANNERS  
CHICAGO, ILLINOIS

USER NAME = #USER#  
DESIGNED - KRR  
DRAWN - JB  
CHECKED - KRR  
DATE - 10/21/11

PLOT SCALE = #SCALE#  
PLOT DATE = #DATE#

REVISED -  
REVISED -  
REVISED -  
REVISED -

**STATE OF ILLINOIS**  
**DEPARTMENT OF TRANSPORTATION**  
PROPOSED RELOCATED IL ROUTE 3 INTERCHANGE

**PROPOSED I-70**  
**ITS PLAN**  
**STA. 139+00 TO STA. 151+00**

SCALE: 1"=50'  
SHEET NO. 3 OF 10 SHEETS  
STA. TO STA.

F.A.P. RTE.	SECTION	COUNTY	TOTAL SHEETS	SHEET NO.
998	82-2-1K	ST. CLAIR	353	235
CONTRACT NO. 76E06			ILLINOIS FED. AID PROJECT	