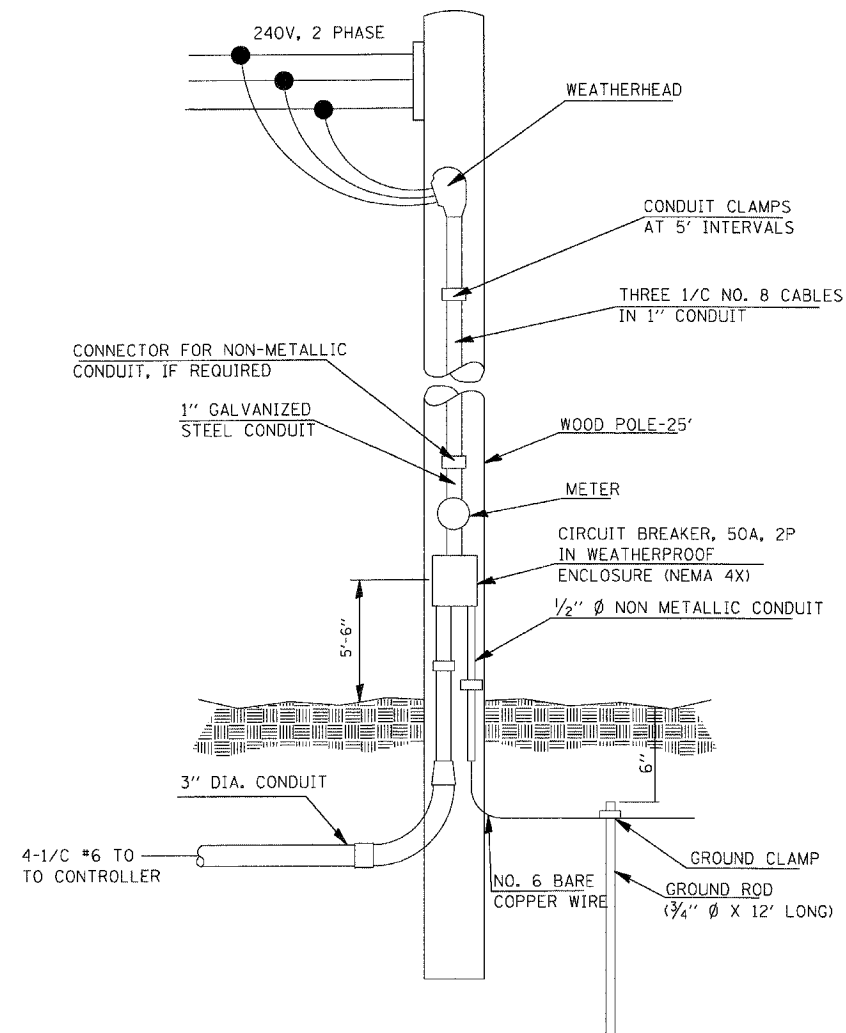


**CAMER LOWERING DEVICE FOR POLE  
MOUNTING MULTI-FUNCTION SURVEILLANCE CAMERAS  
CLDMG2-HYP-050-ST-D & CLDMG2-HYP-080-ST-D**

NOT TO SCALE



**SERVICE INSTALLATION, TYPE A**

NOT TO SCALE

\DRCD\11-BORDERLIGN 18-20-2011 11:31:38  
 \S-0944\WALL D-TRANS.07-2202\2006-081\ARCH\CD\TDS TECH SYS\CONNSHEETS CONTRACT 11\DRCD\11-SHT-TS\PLANS-BLDG  
 BONDHULLO

FILE NAME =	USER NAME = #USER#	DESIGNED - KRR	REVISED -
#FILEL#		DRAWN - ARM	REVISED -
TENG & ASSOCIATES, INC. ENGINEERS/ARCHITECTS/PLANNERS CHICAGO, ILLINOIS	PLOT SCALE = #SCALE#	CHECKED - KRR	REVISED -
	PLOT DATE = #DATE#	DATE - 10/21/11	REVISED -

**STATE OF ILLINOIS**  
**DEPARTMENT OF TRANSPORTATION**  
 PROPOSED RELOCATED IL ROUTE 3 INTERCHANGE

POLE AND TOWER MOUNTED CCTV WITH CAMERA LOWERING DEVICE DETAIL & SERVICE INSTALLATION, TYPE A DETAIL			
SCALE: N.T.S.	SHEET NO. OF SHEETS	STA. TO STA.	

F.A.P. RTE.	SECTION	COUNTY	TOTAL SHEETS	SHEET NO.
998	82-2-1K	ST. CLAIR	353	252
CONTRACT NO. 76E06				
FED. ROAD DIST. NO. ILLINOIS FED. AID PROJECT				