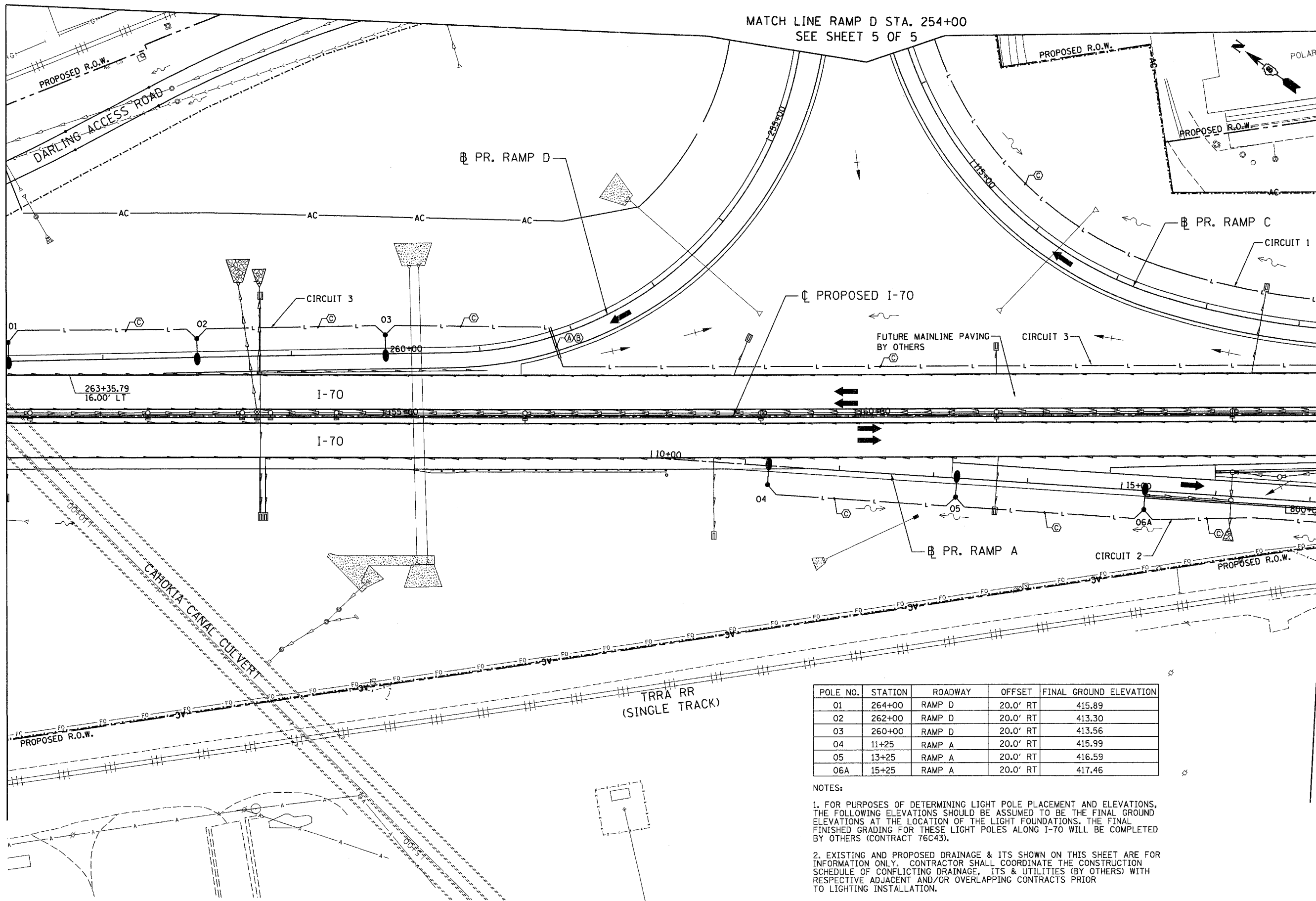


MATCH LINE RAMP D STA. 254+00  
SEE SHEET 5 OF 5

STA. 151+00

MATCH LINE STA. 165+00  
SEE SHEET 3 OF 5



POLE NO.	STATION	ROADWAY	OFFSET	FINAL GROUND ELEVATION
01	264+00	RAMP D	20.0' RT	415.89
02	262+00	RAMP D	20.0' RT	413.30
03	260+00	RAMP D	20.0' RT	413.56
04	11+25	RAMP A	20.0' RT	415.99
05	13+25	RAMP A	20.0' RT	416.59
06A	15+25	RAMP A	20.0' RT	417.46

NOTES:

1. FOR PURPOSES OF DETERMINING LIGHT POLE PLACEMENT AND ELEVATIONS, THE FOLLOWING ELEVATIONS SHOULD BE ASSUMED TO BE THE FINAL GROUND ELEVATIONS AT THE LOCATION OF THE LIGHT FOUNDATIONS. THE FINAL FINISHED GRADING FOR THESE LIGHT POLES ALONG I-70 WILL BE COMPLETED BY OTHERS (CONTRACT 76C43).

2. EXISTING AND PROPOSED DRAINAGE & ITS SHOWN ON THIS SHEET ARE FOR INFORMATION ONLY. CONTRACTOR SHALL COORDINATE THE CONSTRUCTION SCHEDULE OF CONFLICTING DRAINAGE, ITS & UTILITIES (BY OTHERS) WITH RESPECTIVE ADJACENT AND/OR OVERLAPPING CONTRACTS PRIOR TO LIGHTING INSTALLATION.

STATE OF ILLINOIS  
DEPARTMENT OF TRANSPORTATION  
I-70 CONNECTION

PROPOSED I-70  
LIGHTING PLANS  
STA. 151+00 TO STA. 165+00

F.A.P. RTE.	SECTION	COUNTY	TOTAL SHEETS	SHEET NO.
998	82-2-1K	ST. CLAIR	353	263
				CONTRACT NO. 76E06

FILE NAME =  
#FILE#  
ABNA ENGINEERING INC.  
PROFESSIONAL ENGINEERS  
EAST ST. LOUIS, ILLINOIS

USER NAME = #USER#  
DESIGNED - AAB  
DRAWN - MNR  
CHECKED - JL  
DATE - 10/21/11

REVISER -  
REVISER -  
REVISER -  
REVISER -

PLOT SCALE = #SCALE#  
PLOT DATE = #DATE#

SCALE: 1"=50' SHEET NO. 2 OF 5 SHEETS STA. TO STA.

FED. ROAD DIST. NO. ILLINOIS FED. AID PROJECT