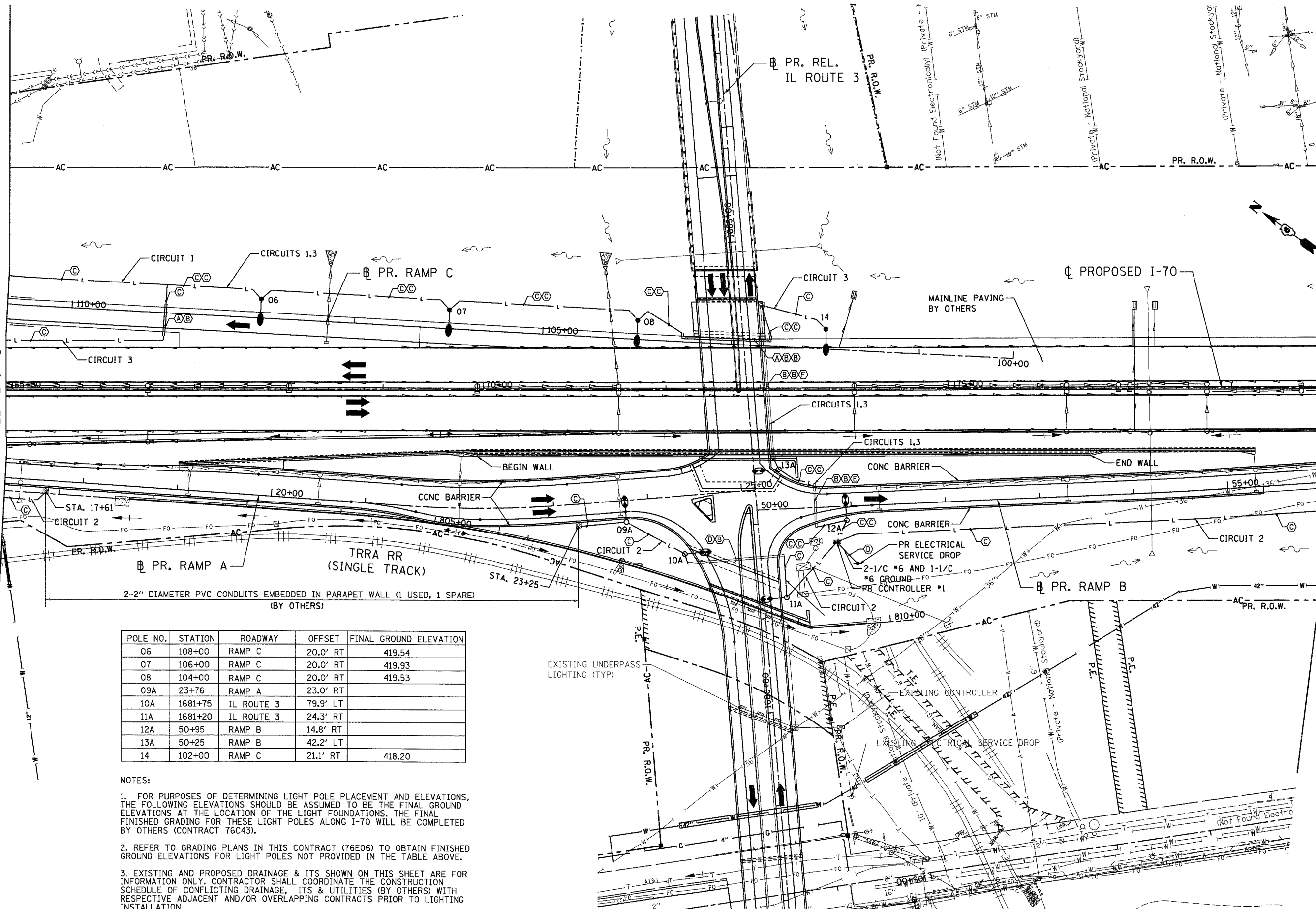


MATCH LINE STA. 165+00  
SEE SHEET 2 OF 5

MATCH LINE STA. 179+00  
SEE SHEET 4 OF 5



POLE NO.	STATION	ROADWAY	OFFSET	FINAL GROUND ELEVATION
06	108+00	RAMP C	20.0' RT	419.54
07	106+00	RAMP C	20.0' RT	419.93
08	104+00	RAMP C	20.0' RT	419.53
09A	23+76	RAMP A	23.0' RT	
10A	1681+75	IL ROUTE 3	79.9' LT	
11A	1681+20	IL ROUTE 3	24.3' RT	
12A	50+95	RAMP B	14.8' RT	
13A	50+25	RAMP B	42.2' LT	
14	102+00	RAMP C	21.1' RT	418.20

**NOTES:**

- FOR PURPOSES OF DETERMINING LIGHT POLE PLACEMENT AND ELEVATIONS, THE FOLLOWING ELEVATIONS SHOULD BE ASSUMED TO BE THE FINAL GROUND ELEVATIONS AT THE LOCATION OF THE LIGHT FOUNDATIONS. THE FINAL FINISHED GRADING FOR THESE LIGHT POLES ALONG I-70 WILL BE COMPLETED BY OTHERS (CONTRACT 76C43).
- REFER TO GRADING PLANS IN THIS CONTRACT (76E06) TO OBTAIN FINISHED GROUND ELEVATIONS FOR LIGHT POLES NOT PROVIDED IN THE TABLE ABOVE.
- EXISTING AND PROPOSED DRAINAGE & ITS SHOWN ON THIS SHEET ARE FOR INFORMATION ONLY. CONTRACTOR SHALL COORDINATE THE CONSTRUCTION SCHEDULE OF CONFLICTING DRAINAGE, ITS & UTILITIES (BY OTHERS) WITH RESPECTIVE ADJACENT AND/OR OVERLAPPING CONTRACTS PRIOR TO LIGHTING INSTALLATION.

FILE NAME = #FILE#  
 USER NAME = #USER#  
 PLOT SCALE = #SCALE#  
 PLOT DATE = #DATE#  
 ABNA ENGINEERING INC.  
 PROFESSIONAL ENGINEERS  
 EAST ST. LOUIS, ILLINOIS

DESIGNED - AAB  
 DRAWN - MNR  
 CHECKED - JL  
 DATE - 10/21/11

REVISED -  
 REVISED -  
 REVISED -  
 REVISED -

**STATE OF ILLINOIS  
 DEPARTMENT OF TRANSPORTATION**  
 I-70 CONNECTION

**PROPOSED I-70  
 LIGHTING PLAN**  
 STA. 165+00 TO STA. 179+00  
 SCALE: 1"=50'  
 SHEET NO. 3 OF 5 SHEETS

F.A.P. RTE. 998	SECTION 82-2-1K	COUNTY ST. CLAIR	TOTAL SHEETS 353	SHEET NO. 264
CONTRACT NO. 76E06				